

Telecare LIN eNewsletter

May 2009

Welcome to the May 2009 newsletter. The Telecare Learning and Improvement Network (LIN) is responsible for providing general implementation support to organisations building their telecare and telehealth programmes.

If you are an organisation implementing telecare or telehealth in England and have an interesting local telecare or telehealth story for inclusion in a future newsletter then e-mail Mike Clark at telecare@dhcarenetworks.org.uk

Note: DH Care Networks is not responsible for the content of external links and does not endorse any suppliers or their products. Any claims made by organisations should be carefully evaluated as part of normal commissioning and procurement arrangements.

Contents

ITEM	PAGE
HEADLINES FOR MAY 2009	2
1 WHOLE SYSTEM DEMONSTRATOR ACTION NETWORK (WSDAN)	4
2 PANDEMIC FLU PLANNING – LEVEL 5	5
3 NHS INNOVATION EXPO – 18/19 JUNE 2009	7
4 A NEW COMMERCIAL OPERATING MODEL FOR THE NHS AND DEPARTMENT OF HEALTH	8
5 TELEHEALTH MAPPING	9
6 PREPARE HEALTH SYSTEMS FOR AGEING EU TOLD	10
7 PUTTING THE PATIENT IN CONTROL – NEXT STAGE IN PERSONAL HEALTHCARE BUDGETS ANNOUNCED	10
8 OTHER DEPARTMENT OF HEALTH NEWS	11
9 NEWS	14
10 EVENTS	28
APPENDIX – PCTs and telehealth	30

Headlines for May 2009

1 There are a few late cancellations left for the next public Whole System Demonstrator event on 11 June in Leeds. As well as updates from the demonstrators and the Leeds and Nottingham programmes, there will be presentations from Paul Trueman (YHEC: Scottish Telecare Evaluation), Professor John Cleland (Hull: telehealth and heart failure) and Professor Sue Yeandle (telecare research at Leeds University). Nick Goodwin, Mike Clark and John Eaglesham will be running workshops. Booking for the Bristol event on 10 September will be open later in June 2009.

2 The Department of Health has provided information and guidance in recent months on pandemic flu planning for health and social care. In the light of the current H1N1 (swine flu) situation, it is important to review the effectiveness of local plans for business continuity to support current and future alert levels. Inadequate planning at this stage may lead to possible failures in telecare services at a later date if staff are affected by flu. Involvement in local planning should ensure business continuity for service users and patients.

3 There will be an NHS Innovation Expo on 18/19 June at the Excel Centre in London. The Expo includes telehealth suppliers and an Innovation House with telecare/telehealth.

4 A new commercial operating model for the NHS and Department of Health has been published following the recent budget. This covers the position on commercial support units, NHS PASA and the Office of Government Commerce.

5 Published internet information on telehealth in PCTs has been updated – over 100 (of 152) PCTs have a documented intention, plan or pilot programme for telehealth in England. Details appear in an Appendix within the newsletter.

6 An EU report considers the costs of an ageing population. “In order to limit the expected increase in public expenditure, policy measures which can either reduce disability, limit the need for formal care or improve the cost effectiveness of long term care provision – eg through the introduction of eHealth and telecare – must be developed,” it says.

7 Patients are a step closer to getting more say over their healthcare services as plans for a national pilot project reach the next stage, the Department of Health has announced. Following a call for expressions of interest for sites across England to take part in the first trials of personal health budgets, 68 projects, involving a total of 75 PCTs, have been awarded provisional pilot status. Lord Darzi first announced personal health budgets in his report High Quality Care for All last year. Under the proposals, patients will have greater involvement in how money is spent on their healthcare needs, giving them more control over what services they use and who provides them so they will be delivered in a way that best suits them.

8 a range of recent Department of Health publications cover 2009 Heatwave Plan, the NHS Evidence web site, the vascular checks programme, innovation and the areas being examined by none Common Assessment Framework (CAF) demonstrators.

9 The most comprehensive monthly news and information summary in England covers a wide range of developments in telecare, telehealth and telemedicine of value to individuals organising local programme.

10 A range of events are provided by DH Care Networks – there may be one or two late cancellations for the Leeds Whole System Demonstrator event on 11 June. The next event will be on 10 September 2009 in Bristol.

1 Whole System Demonstrator Action Network (WSDAN)

Prepared by Mike Clark

The latest WSDAN eNewsletter was issued on 14 May covering updates on the demonstrator programme together with evidence reviews. The next newsletter is due on 11 June – don't forget to register.

WSD Action Network News – May 2009

[Update from the Department of Health's Whole System Demonstrator pilots](#) gives the latest news on the involvement of GP practices, the importance of stakeholder sign-up and other issues.

Features examining [the evidence base for the management of diabetes](#) and [issues around sustaining innovations](#).

Report on [the second WSDAN Roadshow](#), which took place in Birmingham on 12 March.

You can register for WSD Action Network updates at:

http://www.wsdactionnetwork.org.uk/about_wsdan/register_for_updates.html

Over 120 people are now registered for the next WSDAN event on 11 June 2009. In addition to update information from the Whole System Demonstrator Programme, presenters will include:

- [Paul Trueman](#), Director of [York Health Economics Consortium](#) on the recently published evaluation of the [Scottish Telecare programme](#)
- [Professor John Cleland](#) from Hull University on telehealth and heart failure
- [Professor Sue Yeandle](#) from Leeds University on ICT and telecare: researching the impact on carers and care workers

There will be updates on the [NHS PASA](#) timetable for the 2010 national framework, work being carried out by **NHS Connecting for Health** on capturing telehealth information in the summary health records and progress by the **Assisted Living Innovation Platform**. There will be presentations on telecare and telehealth from **Leeds** and **Nottingham**. John Eaglesham will be looking at telehealth developments in Yorkshire and Mike Clark will be covering the commissioning of telecare and telehealth services.

Cancellations for Leeds may be available:

<http://www.dhcarenetworks.org.uk/Events/EventDetail/?eventID=462>

The next event will be **10 September 2009** in **Bristol** – booking will open later in June 2009.

2 Pandemic Flu planning – Level 5

Prepared by Mike Clark

Since the first notifications of the new H1N1 flu strain (also known as swine flu), health trusts, local authorities and their partner agencies have increased their arrangements to meet potential flu cases in the coming months.

It is important that telecare services are well prepared to ensure business continuity if significant numbers of people are affected. Here are some important areas to look at:

- Have there been reported H1N1 cases in your area? How have services responded? What arrangements are in place? What local lessons have been learned?
- Have you reviewed the range of relevant documentation (eg policy, guidance, leaflets etc) available from Government and other sources that would help with planning and providing information to staff and service users?
- Do you know about your local flu plan arrangements? Are you up to date with recent local developments?
- Are arrangements in place to provide national and local sources of information to users and carers if they are unwell?
- Are arrangements in place to link with care providers if users call in to indicate that their care worker or personal assistant is unwell?
- Are management and service responsibilities clearly set out?
- Are staff fully briefed on a regular basis about current arrangements and future plans if Level 6 was announced?
- Are appropriate cover arrangements in place to maintain a control centre and a home visit service if staff are affected by flu? Would other staff be able to cover from the current base or another control centre location?
- Have you reviewed business continuity and resilience arrangements?

Swine Flu Resources for health and social care professionals
http://www.dh.gov.uk/en/Publichealth/Flu/Swineflu/DH_098802

Pandemic Flu – DH Site
<http://www.dh.gov.uk/en/Publichealth/Flu/PandemicFlu/index.htm>

Pandemic flu: managing demand and capacity in health care organisations (surge)

“Preparations for dealing with a surge of patients and service users – and how services and patients are prioritised – need to be developed, agreed and in place amongst all caring agencies before a pandemic strikes. It is important that a common set of prioritisation criteria be used across the UK. Clarity and transparency will be essential, as will consistent planning according to the national planning assumptions and principles as set out in *Pandemic flu: A national framework for responding to an influenza pandemic*”

http://www.dh.gov.uk/en/Publicationsandstatistics/Publications/PublicationsPolicyAndGuidance/DH_098769

Direct Gov web site – information from across government departments

http://www.direct.gov.uk/en/Swineflu/DG_177831

Health protection Agency

<http://www.hpa.org.uk/>

Swine Flu – DH statements

<http://www.dh.gov.uk/en/Publichealth/Flu/Swineflu/index.htm>

NHS Choices – will provide updated information on any changes:

<http://www.nhs.uk/Pages/HomePage.aspx>

Main DH Pandemic Flu site:

http://www.dh.gov.uk/en/Publichealth/Flu/PandemicFlu/DH_065006

Guidance for businesses:

http://www.dh.gov.uk/en/Publicationsandstatistics/Publications/PublicationsPolicyAndGuidance/DH_097137

Published guidance:

http://www.dh.gov.uk/en/Publichealth/Flu/PandemicFlu/DH_093202

Human resources guidance for the NHS:

http://www.dh.gov.uk/en/Publicationsandstatistics/Publications/PublicationsPolicyAndGuidance/DH_086833

Pandemic influenza: guidance for primary care trusts and primary care professionals on the provision of healthcare in a community setting in England

http://www.dh.gov.uk/en/Publicationsandstatistics/Publications/PublicationsPolicyAndGuidance/DH_091993

Planning for pandemic influenza in social care – some modules available (but not all)

http://www.dh.gov.uk/en/Publicationsandstatistics/Publications/PublicationsPolicyAndGuidance/DH_093380

An operational and strategic framework: planning for pandemic influenza in adult social care

http://www.dh.gov.uk/en/Publicationsandstatistics/Publications/PublicationsPolicyAndGuidance/DH_080755

DH Pandemic Flu FAQs

http://www.dh.gov.uk/en/Publichealth/Flu/PandemicFlu/FAQonly/DH_065088

UKHCA guidance for home care providers on Pandemic Flu

<http://www.ukhca.co.uk/flu/>

UK resilience (Cabinet office)

<http://www.cabinetoffice.gov.uk/ukresilience/pandemicflu.aspx>

UK Health Protection Agency (HPA)

<http://www.hpa.org.uk/>

US Centre for Disease Control

<http://www.cdc.gov/swineflu/>

DH web site for Statements from Secretary of State and Chief Medical Officer

<http://www.dh.gov.uk/en/index.htm>

3 NHS Innovation Expo – 18/19 June 2009

The screenshot shows the NHS Innovation Expo website homepage. At the top left is the 'Innovation EXPO' logo. A purple banner in the top right says 'Welcome to the Innovation EXPO website. _' and 'Click Here To Register'. Below this is a navigation bar with logos for healthlaunchpad, european scanning centre, CISCO, EPSRC, and Docobo. The main content area is divided into several sections:

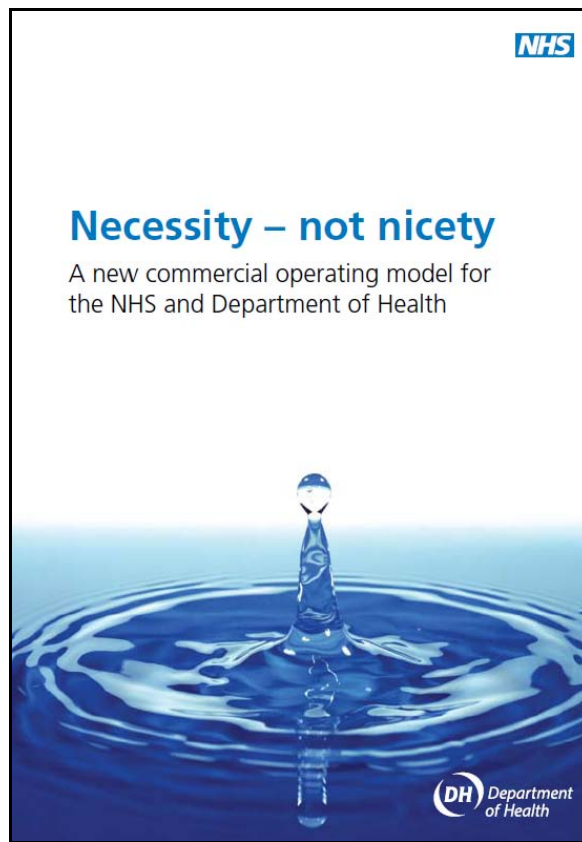
- Latest News:** Clayton Christensen to make EXPO's closing speech. (2 Jun 2009). Plenty of evidence at EXPO. (1 Jun 2009). NASA to be part of EXPO. (13 May 2009). Roundtable Healthcare Think Tank. (12 May 2009). EXPO Wargame on Interventional Radiology.
- About EXPO:** The EXPO brings together the best in innovation from the private, public, voluntary, scientific and academic communities. It is a unique combination of innovative trade fair, world leading speakers and a comprehensive seminar programme.
- An Interactive Experience:** You can book and plan your trip to the EXPO here. There will be plenty of opportunities to participate in workshops and research surveys. You will be able to make video diaries and contribute to the EXPO SMS and Twitter Walls.
- Main Stage Speakers:** The main stage speaker programme includes world leading clinicians, innovators, global CEO's, Government Ministers and expert commentators.
- Seminar Programme:** Everyone who registers for the EXPO has the opportunity to book free seminars from a comprehensive programme. These include a play on genetics, workshops with the Design Council and many specialist speakers.
- Register Now:** Entry to the EXPO is only by pre-registration. Book before the 31st May for discounted registration costs.
- Exhibitors Floor Plan:** The main EXPO exhibition hall stretches over 8,000sm with over 200 organisations from the public, private and third sector. Showcases include robotics, new ambulance designs and a technology crèche.

<http://www.healthcareinnovationexpo.com/>

There will be an NHS Innovation Expo at the Excel Centre in London on 18 and 19 June 2009. This will include a range of technology and innovation including telehealth. A number of exhibitors have been

confirmed together with prominent speakers (see Expo web site for latest information including the Innovation House). There is a registration fee.

4 A new commercial operating model for the NHS and Department of Health



“The document sets out why commercial skills are now integral to the NHS at all levels. It describes a new operating model for commercial capability – the way commercial skills will be organised and applied at different levels across the NHS to have maximum impact.

The economic climate in which public services operate will require unprecedented levels of innovation, service responsiveness and efficiency in the future. For the NHS this means seizing the opportunity provided by reforms over recent years to realise greater value and quality for patients, the public and taxpayers alike”.

Of particular interest to readers will be the position on commercial support units (CSUs) and the NHS Purchasing and Supply Agency (NHS PASA).

Transferring the NHS Purchasing and Supply Agency’s (NHS PASA) functions to organisations that can add greater scope, scale and impact to the procurement of goods and services.

“The integration of key NHS PASA sourcing activities with OGC buying solutions (OGCb), including the formation of an NHS-facing buying arm, will contribute to the Treasury’s requirements to aggregate public sector spending power. The move of some other NHS PASA functions to the CSUs will build regional capability. NHS PASA itself will be closed and efficiencies realised. Greater purchasing muscle will serve both providers and commissioners as they secure greater efficiencies in the provision of goods and services and drive better value through the Supply Chain”.

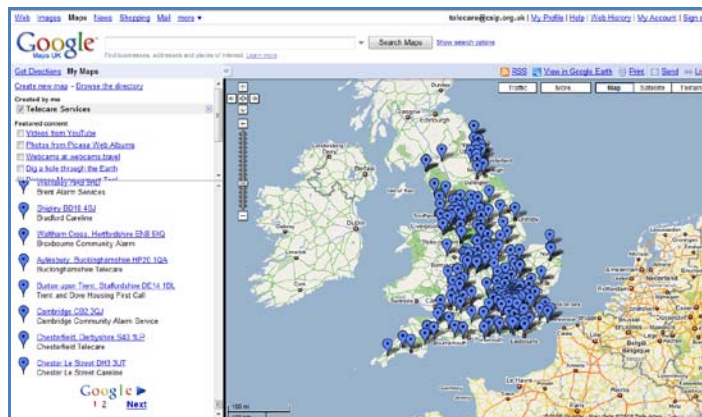
http://www.dh.gov.uk/en/Publicationsandstatistics/Publications/PublicationsPolicyAndGuidance/DH_098876

5 Telehealth mapping

Prepared by Mike Clark

An updated list of internet links covering PCTs in England and their involvement in telehealth is now available and appears as Appendix A to this newsletter. The links cover references to telehealth in local reports through to early results of pilot programmes. Over 100 PCTs are listed of which around half have pilots or programmes in place. The numbers per site are still relatively low apart from some early adopters who are working with more than 100 telehealth units.

If you are looking for telecare services then visit www.dhcarenetworks.org.uk/telecareservices or use the map link below.



For web site links to telecare services in England go to:

<http://maps.google.co.uk/maps/ms?hl=en&ie=UTF8&msa=0&msid=100406857045032193451.0004540c223f16f2d1c9d&z=6>

Note: 200 service links are on Page 1 and a further 114 on Page 2 (Click 'Next' at the bottom of the list to see sites on the second page)

6 Prepare health systems for ageing EU told

Prepared by Mike Clark

European governments “grappling with the severe economic and financial crisis” need to prepare for the costs of an ageing population, the European Commission has warned.

In a communication dealing with the impact of an aging population in the EU, the Commission warns that if governments do not address work, pensions, health and social care issues they will face significant additional costs and even cause tensions between generations.

Countries that rely on informal care for the very elderly are likely to be particularly badly hit, as there are fewer working age people in the population and those that are available are pulled into work to maintain GDP and personal incomes.

“In order to limit the expected increase in public expenditure, policy measures which can either reduce disability, limit the need for formal care or improve the cost effectiveness of long term care provision – eg through the introduction of eHealth and telecare – must be developed,” it says.

http://www.ehealthurope.net/news/4807/prepare_health_systems_for_ageing_eu_told



http://ec.europa.eu/economy_finance/thematic_articles/article14761_en.htm

7 Putting the Patient in Control – next stage in personal healthcare budgets announced

Patients are a step closer to getting more say over their healthcare services as plans for a national pilot project reach the next stage, the Department of Health has announced.

Following a call for expressions of interest for sites across England to take part in the first trials of personal health budgets, 68 projects, involving a total of 75 PCTs, have been awarded provisional pilot status.

Lord Darzi first announced personal health budgets in his report High Quality Care for All last year. Under the proposals, patients will have greater involvement in how money is spent on their healthcare needs, giving them more control over what services they use and who provides them so they will be delivered in a way that best suits them.

Link: <http://nds.coi.gov.uk/content/detail.asp?NewsAreaID=2&ReleaseID=401129>

8 Other Department of Health news

a) Change in measurement of HBA1C for people with diabetes

From 1 June 2009, HbA1c (long term blood glucose levels) in all people with diabetes will be measured in millimoles per mol as well as by percentage, the Department of Health said today.

Link:

<http://nds.coi.gov.uk/environment/fullDetail.asp?ReleaseID=402333&NewsAreaID=2&NavigatedFromDepartment=False>

b) 2009 Heatwave Plan

Practical action to prepare for a potential heatwave is the central theme of the 2009 Heatwave Plan published by the Department of Health on 19 May 2009. The plan urges everyone to be aware of the health risks faced by elderly friends and relatives during a heatwave.

For the very young and older people or those with serious illnesses, heat can be dangerous. In particular, it can make heart and respiratory problems worse. In extreme cases, excess heat can lead to heat stroke, which can be fatal.

Links:

<http://nds.coi.gov.uk/environment/fullDetail.asp?ReleaseID=401765&NewsAreaID=2&NavigatedFromDepartment=False>

http://www.dh.gov.uk/en/News/Recentstories/DH_099578

http://www.dh.gov.uk/en/Publicationsandstatistics/Lettersandcirculars/Dearcolleagueletters/DH_099023

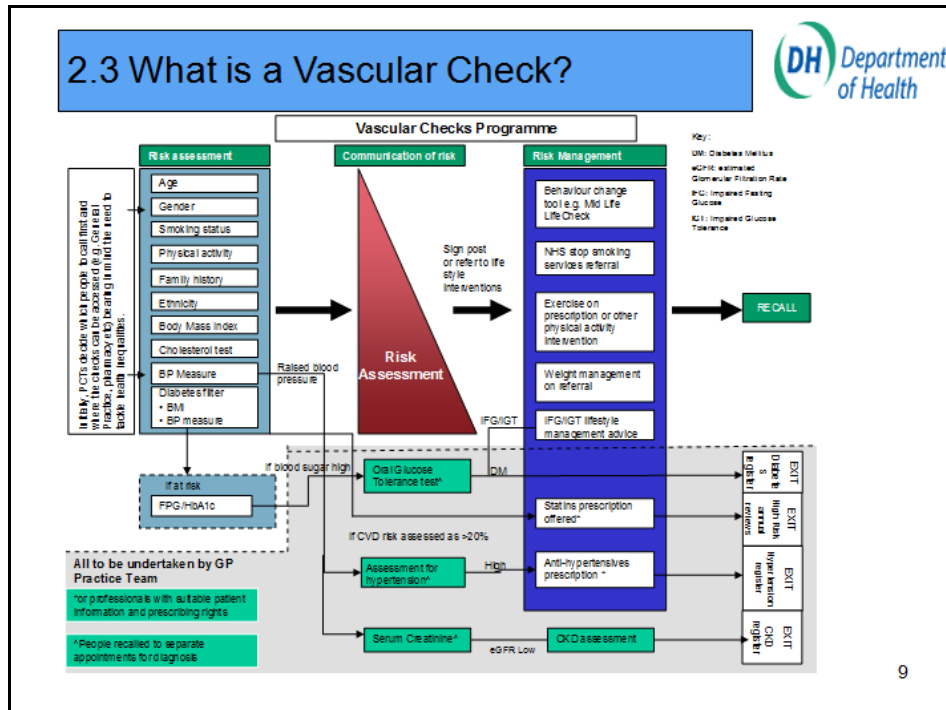
c) NHS Evidence

The NHS evidence web site referenced in the [Darzi Report](#) from 2008 is now operational.

Link: <http://www.evidence.nhs.uk/>

d) Vascular checks – briefing pack

This revised pack provides the ten strategic health authorities (SHAs) with an assessment of progress, opportunities and future challenges in key areas of vascular disease, namely coronary heart disease, stroke, diabetes and renal disease.



http://www.dh.gov.uk/en/Publicationsandstatistics/Publications/PublicationsPolicyAndGuidance/DH_098627

e) Creating an innovative culture

A new legal duty for strategic health authorities (SHAs) to promote innovation, which will act as an enabling tool for SHAs in driving innovation forward within local communities, commenced on 27th April. Best practice guidance - explaining the purpose of the duty, what it means for patients, public and staff, and where to seek further information - has also been issued.

http://www.dh.gov.uk/en/Publicationsandstatistics/Publications/PublicationsPolicyAndGuidance/DH_098540

f) NHS staff receive £1.5 million to help innovation in community services/over £200m announced to boost NHS Innovation

NHS staff have received awards totaling £1.5m to pursue projects that will work toward developing services in the community such as bi-lingual stroke rehabilitation programmes and diet and nutrition training, announced the Department of Health today.

A further £220 million fund has also been announced this week building on the Government's firm commitment to create an innovative health service.

England's ten Strategic Health Authorities (SHAs) will each receive £2 million this year and £5 million in each of the following four years. This will support frontline NHS staff and help ensure that great ideas get recognised, that funding is available and that the time it takes for solutions to get from design bench to NHS bedside is speeded up.

Examples include:

- Southwark PCT - Community Diabetes Project
- Redbridge PCT - Reconnect using Community Resources - Stroke rehabilitation using assistive technology through volunteers in communities using a language other than English
- Winchester & Eastleigh Healthcare Trust - Installing a telemedicine link between Andover Community Hospital & Winchester District General Hospital to reduce potentially avoidable ambulance journeys and hospital admissions
- Leicester County & Rutland Community Health Service - Provide a model of integrated streamlined care for patients with Long Term Conditions

g) Common Assessment Framework for Adults Demonstrator Site Programme: overview of Phase 1 sites

An overview of the activities within the nine demonstrators is now available.

The Demonstrator Site Programme will develop and test improved information sharing across health, social care and wider community support services. The sites have been chosen to lead the way forward in creating a more efficient and transparent system of information sharing, to avoid duplication in assessments and ensure that people receive the best quality care and support.

This document provides an overview for interested parties of what each site will be addressing and the organisations involved in the partnership. The sites are led by the local adult social services and involve a range of community and acute health services, mental health trusts, housing support services and IT suppliers as well as wider partners in the voluntary and private sector.

Link:

http://www.dh.gov.uk/en/Publicationsandstatistics/Publications/PublicationsPolicyAndGuidance/DH_099703

9 News

News from around the world covering telecare, telehealth and related areas of interest to commissioners, service providers, suppliers and other organisations – prepared by Mike Clark

a) Telecare

Ground breaking sensor scheme for elderly and vulnerable up for award (Lincs)

<http://www.marketrasenmail.co.uk/news/Ground-breaking-sensor-scheme-for.5334269.jp>

Domestic abuse alarm system in Angus using telecare services

<http://news.stv.tv/scotland/100520-domestic-abuse-alarm-system-in-angus/>

<http://www.fifedirect.org.uk/news/index.cfm?fuseaction=news.display&objectid=8B95DD5D-F165-706C-5DF9A12A16E7037A>

Fife trials device to help dementia sufferers

<http://www.fifedirect.org.uk/news/index.cfm?fuseaction=news.display&objectid=8B95DD5D-F165-706C-5DF9A12A16E7037A>

<http://news.stv.tv/scotland/99856-fife-trials-device-to-help-dementia-sufferers/>

Invicta Telecare throws a lifeline

An alarm unit, which automatically calls for help, proved to be a real lifeline when Jean stumbled and fell outside her home in Maidstone gashing her forehead and breaking her nose and arm.

<http://www.24dash.com/news/Housing/2009-06-02-Invicta-Telecare-throws-a-lifeline>

Information architecture of a telecare system

<http://jtt.rsmjournals.com/cgi/content/abstract/15/4/161>

Indicated benefits of bed epilepsy sensors to users of a telecare service in the Republic of Ireland

<http://pavilionjournals.metapress.com/content/f88714136578xl53/>

Could AT&T Prevent Falls Among the Elderly?

http://www.businessweek.com/innovate/next/archives/2009/05/how_att_could_p.html

Tameside telecare

http://www.manchestereveningnews.co.uk/news/s/1111995_spy_lifeline_for_pensioners

South Tyneside - a community alarm service helping more than 4,600 South Tynesiders to live independently has come in for praise. South Tyneside Council has received accreditation for good practice from the Telecare Services Association.



<http://www.shieldsgazette.com/news/Alarm-scheme-helps-independent-living.5223683.jp>

Widening the net – digital inclusion – reference to Sunderland telecare

<http://www.lgcplus.com/news/news-from-the-councils/widening-the-net/5001796.article>

Team's quick thinking in fire call earns praise

Operators at Doncaster-based Tunstall Response have been praised by fire chiefs for their quick thinking and cool heads when they dealt with an emergency house fire call.

Staffordshire Fire and Rescue Service Area Commander Alf Wilson visited the monitoring centre at Redhouse, Adwick-le-Street, to thank staff and present them with a certificate of commendation.

The Response centre monitors Careline telecare technology in thousands of UK homes, allowing people to call for help at any time.

<http://www.thestar.co.uk/doncaster/Team39s-quick-thinking-in-fire.5283170.jp>

Extra care in Burton - £10m project for the elderly includes telecare

Trent and Dove Housing and Staffordshire County Council are planning an Extra Care scheme in Anglesey Road, Burton.

Facilities are likely to include a restaurant, shop, hairdressing salon, and health facilities, as well as the scheme being wired up to high-tech computer and scanner systems for the latest in 'Telecare' provision, which can sense risks such as smoke, floods and gas, remind people to take pills and call for help if they fall.

<http://www.burtonmail.co.uk/burtonmail-news/displayarticle.asp?id=416928>

b) Telehealth

School-Centered Telemedicine for Children with Type 1 Diabetes Mellitus. The Journal of Pediatrics
[http://www.jpeds.com/article/S0022-3476\(09\)00234-0/abstract](http://www.jpeds.com/article/S0022-3476(09)00234-0/abstract)

Report: Health IT central to chronic disease management
http://www.fiercehealthit.com/story/report-health-it-central-chronic-disease-management/2009-06-01?utm_medium=nl&utm_source=internal
http://www.healthdatamanagement.com/news/chronically_ill-28298-1.html

A randomized controlled trial of telephone–supported care coordination in patients with congestive heart failure
<http://jtt.rsmjournals.com/cgi/content/abstract/15/4/182>

Hi-tech clothes to help elderly
http://news.bbc.co.uk/1/hi/northern_ireland/8077240.stm

Office spirometry can improve the diagnosis of obstructive airway disease in primary care setting (telespirometry)
[http://www.sciencedirect.com/science?_ob=ArticleURL&_udi=B6WWS-4VJBCHM-1&_user=10&_coverDate=06%2F30%2F2009&_rdoc=11&_fmt=high&_orig=browse&_srch=doc-info\(%23toc%237138%232009%23998969993%231093066%23FLA%23display%23Volume\)&_cdi=7138&_sort=d&_docanchor=&_ct=25&_acct=C000050221&_version=1&_urlVersion=0&_userid=10&md5=0018ab4abf27feaddfce36084cb8a253](http://www.sciencedirect.com/science?_ob=ArticleURL&_udi=B6WWS-4VJBCHM-1&_user=10&_coverDate=06%2F30%2F2009&_rdoc=11&_fmt=high&_orig=browse&_srch=doc-info(%23toc%237138%232009%23998969993%231093066%23FLA%23display%23Volume)&_cdi=7138&_sort=d&_docanchor=&_ct=25&_acct=C000050221&_version=1&_urlVersion=0&_userid=10&md5=0018ab4abf27feaddfce36084cb8a253)

Gadgets to the rescue - Technology can help manage chronic ailments at home
<http://www.steubencourier.com/news/2009/0607/health/018.html>

Hospitals in the USA Pay for Cutting Costly Readmissions

Millions of patients each year leave the hospital only to return within weeks or months for lack of proper follow-up care. One in five [Medicare](#) patients, for example, [returns to the hospital within 30 days](#). Over all, readmissions cost the federal government an estimated \$17 billion a year.

In one quoted example (Park Nicollet Hospital), the key to reducing readmissions is an early-warning system that signals when heart failure patients' symptoms are starting to worsen. All the heart patients in the program weigh themselves daily at home and answer a few simple questions, like whether they are short of breath. They punch this information into their telephone keypads. If the data indicate a possible decline in a patient's condition, the software system alerts a nurse, who follows up with the patient.

http://www.nytimes.com/2009/05/09/business/09relapse.html?pagewanted=2&_r=1&hp (Reg Reqd)

Reportlinker Adds High-Tech Patient Monitoring Systems Markets (Remote and Wireless Systems, Data Processing, EMR Data Transfer) – market research report
<http://www.tmcnet.com/usubmit/2009/06/04/4211223.htm>

IT Vital to Care Management – Report

http://www.healthdatamanagement.com/news/chronically_ill-28298-1.html

AT&T, other firms test 'telehealth' devices to help monitor patients from afar

http://www.dentonrc.com/sharedcontent/dws/bus/stories/DN-attmed_26bus.ART.State.Edition1.40d848e.html

Orange and Alcatel partner on e-health

http://www.ehealthurope.net/news/4886/orange_and_alcatel_partner_on_e-health

Patients, Health Care Providers See Benefit of Online Physician Visits

<http://www.ihealthbeat.org/Articles/2009/6/1/Patients-Health-Care-Providers-See-Benefit-of-Online-Physician-Visits.aspx>

The doctor will see you now online - Why your next physician's visit may be just a click away

http://www.boston.com/news/health/articles/2009/06/01/why_your_next_trip_to_the_doctor_may_be_just_a_click_away/

Telemedicine

<http://webconferencingcouncil.com/?p=637>

Acute Illness Care Patterns Change With Use of Telemedicine

<http://pediatrics.aappublications.org/cgi/content/abstract/123/6/e989>

States Tap Telemedicine Technology To Boost Access to Care

<http://www.ihealthbeat.org/Articles/2009/5/27/States-Tap-Telemedicine-Technology-To-Boost-Access-to-Care.aspx>

Fora Care Inc. to Launch Cost-Effective Solution for Diabetes Care

<http://news.prnewswire.com/DisplayReleaseContent.aspx?ACCT=104&STORY=/www/story/06-04-2009/0005038398&EDATE=>

New Telehealth Pilot Project to Evaluate Technology Solutions for U.S. Market

<http://wireless.sys-con.com/node/988648>

<http://news.prnewswire.com/DisplayReleaseContent.aspx?ACCT=104&STORY=/www/story/06-03-2009/0005037842&EDATE=>

Germany - 60 percent of the over-65s want to use telemedicine

<http://www.pheonixhelp.com/?p=1358>

LifeWatch and Verizon Wireless to Expand Healthcare Telemedicine Solutions

<http://finance.yahoo.com/news/LifeWatch-and-Verizon-prnews-15432538.html?.v=1>

Study finds virtual doctors visits satisfactory for both patients and clinicians

http://www.eurekalert.org/pub_releases/2009-05/mqh-sfv051409.php

FDA approves MedApps wireless remote monitoring – Healthpal

<http://mobihealthnews.com/2564/fda-approves-medapps-wireless-remote-monitoring/>
<http://public.medapps.net/Pages/PR-MedApps-HealthPAL-FDA-Clearance.aspx>

The doctor will see you now...online

<http://www.wellness.com/newsfeed.asp?id=20090601/20090601Thedoctorwillseeyounowonline.xml&storyId=20225894>

Individualized Treatment For Heart Failure Rarely Available Outside Hospital: New Telemonitoring Systems Could 'Radically' Change The Situation

<http://www.sciencedaily.com/releases/2009/05/090530094508.htm>

Tunstall RTX3371 Brings Wireless Health Monitoring To The US

<http://www.gadgetreview.com/2009/04/tunstall-rtx3371-brings-wireless-health-monitoring-to-the-us.html>
<http://news.prnewswire.com/DisplayReleaseContent.aspx?ACCT=104&STORY=/www/story/04-30-2009/0005016407&EDATE=>

Life:Wire Corp And TouchPointCare Enter Into A Strategic Agreement To Integrate And Co-Market Each Others' Patient Management Solutions

http://insurancenewsnet.com/article.asp?a=featured_pr&id=105676

[Bosch enters remote healthcare electronics market with Health Buddy](#)

<http://venturebeat.com/2009/04/28/bosch-enters-remote-healthcare-electronics-market-with-health-buddy/>

A Blood Pressure Monitor to Wear on Your Wrist

<http://health.usnews.com/articles/health/healthday/2009/04/16/a-blood-pressure-monitor-to-wear-on-your-wrist.html>

Telehealth investment in Camden

http://www.allmediascotland.com/media_releases/4684/telehealth_investment_in_camden

Continuous Glucose Monitoring Technology: Promising New Tool For Maintaining Optimal Glucose Control

<http://www.sciencedaily.com/releases/2009/05/090529112532.htm>

Self-treatment results in lower overall health care costs for COPD sufferers

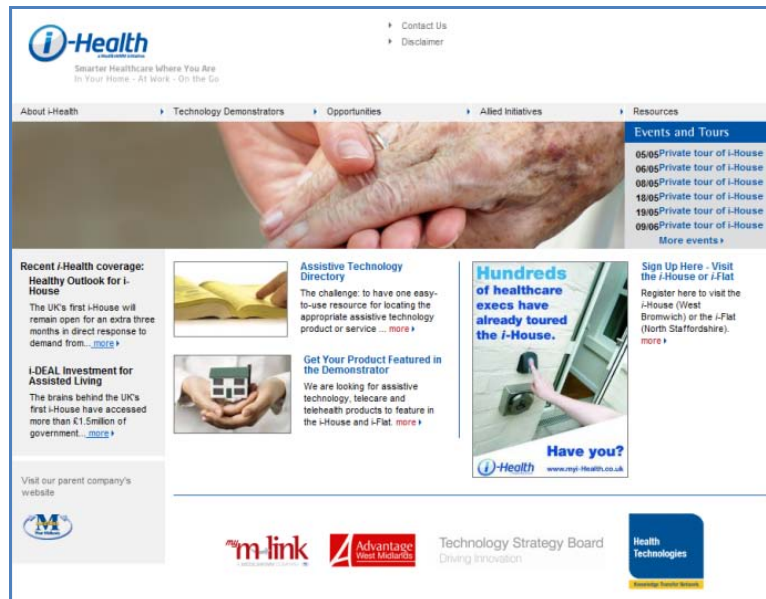
http://www.eurekalert.org/pub_releases/2009-05/ats-sri051209.php

School-based e-consultations can improve disease control and quality of life for children with diabetes, research suggests

<http://www.healthcarerepublic.com/news/PracticeStaff/LatestNews/909408/Telemedicine-aids-diabetes-care/>

Telemonitoring changes the working practice of cardiac nurses

<http://www.medicalnewsbase.com/devices-technology-news/telemonitoring-changes-the-working-practice-of-cardiac-nurses/>



<http://www.myi-health.co.uk/>

IT to enhance healthcare across Europe

<http://www.news-medical.net/?id=48869>

ExpressMD(TM) Solutions' Remote Patient Health Monitoring Device Receives 510(K) Market Clearance Approval From FDA

<http://news.prnewswire.com/DisplayReleaseContent.aspx?ACCT=104&STORY=/www/story/04-14-2009/0005005885&EDATE=>

New Technology Helps Rural Hospital

<http://www.nebraska.tv/Global/story.asp?S=10259243>

GlobalMedia Launches Telemedicine Product for Ambulatory and Emergency Care

<http://www.ehealthonline.org/news/news-details.asp?newsid=15947>

VIDEO: Telemedicine Allows GPs to Treat Skin Conditions Without Referral to a Dermatologist

http://www.insidermedicine.ca/archives/VIDEO_Telemedicine_Allows_GPs_to_Treat_Skin_Conditions_Without_Referral_to_a_Dermatologist_3525.aspx

Continua Health Alliance Awarded for Innovation in Telemedicine

http://www.businesswire.com/portal/site/google/?ndmViewId=news_view&newsId=20090428005414&newsLang=en

GE Launches 'Healthymagination'; Will Commit \$6 Billion to Enable Better Health

http://www.fiercehealthcare.com/press-releases/ge-launches-healthymagination-will-commit-6-billion-enable-better-health?utm_medium=nl&utm_source=internal

Sweden & Finland Look to UK Telehealthcare Success to Shape Healthcare

<http://www.publictechnology.net/modules.php?op=modload&name=News&file=article&sid=19869>

Cambridge Consultants brings the 'connected patient' concept to life

<http://www.cambridgenetwork.co.uk/news/article/default.aspx?objid=59056>

http://www.mobile-tech-today.com/story.xhtml?story_id=66402&full_skip=1

Canada to launch e-health service using HealthVault

<http://www.healthcareitnews.com/news/canada-launch-e-health-service-using-healthvault>

Health Care's Wireless Future: Vital Signs in Remote Real-time

<http://singularityhub.com/2009/05/11/health-cares-wireless-future-vital-signs-in-remote-real-time/>

A systematic review of the use of telehealth in Asian countries

<http://jtt.rsmjournals.com/cgi/content/abstract/15/4/175>

MedApps HealthPAL Connects to Microsoft HealthVault to Improve Patient Compliance and Lower Healthcare Costs

<http://news.prnewswire.com/DisplayReleaseContent.aspx?ACCT=104&STORY=/www/story/05-12-2009/0005024102&EDATE=>

A Review of the Evidence for the Use of Telemedicine Within Stroke Systems of Care. A Scientific Statement From the American Heart Association/American Stroke Association

[http://www.mdlinx.com/NurseLinx/news-](http://www.mdlinx.com/NurseLinx/news/article.cfm/2707385/ZZ6821644550261362285079/?news_id=401&subspec_id=46)

[article.cfm/2707385/ZZ6821644550261362285079/?news_id=401&subspec_id=46](http://www.mdlinx.com/NurseLinx/news/article.cfm/2707385/ZZ6821644550261362285079/?news_id=401&subspec_id=46)

<http://www.healthcareitnews.com/news/new-evidence-touts-benefits-telemedicine-stroke-patients>

Hypertension Telemanagement in Black People

<http://circoutcomes.ahajournals.org/cgi/content/abstract/2/3/272>

The use of knowledge management in telemedicine and perceived effects on patient care activities

<http://www.inderscience.com/offer.php?id=25829>

Managing care with handheld technology

<http://www.clinicaladvisor.com/Managing-care-with-handheld-technology/article/137243/>

American Telemedicine Association (ATA) slideshow

<http://mobihealthnews.com/1827/slideshow-images-from-ata-day-2/>

Implementation of telehealth support for patients with type 2 diabetes using insulin treatment: an exploratory study

<http://www.ingentaconnect.com/content/rmp/ipc/2009/00000017/00000001/art00007>

Telehomecare project to improve delivery of services in Yukon

<http://telehealthcanada.blogspot.com/2009/05/telehomecare-project-to-improve.html>

c) Mobile health

Cardiac monitoring using a mobilephone

<http://mobihealthnews.com/2535/lifewatch-posts-up-against-cardionet-with-verizon-deal/>

Healthcare's appeal and barriers for wireless operators

<http://mobihealthnews.com/2516/healthcares-appeal-and-barriers-for-wireless-operators/>

Six Mobile Innovations That Will Change Your Life

<http://8posts.blogspot.com/2009/05/six-mobile-innovations-that-will-change.html>

Designing mobiles for seniors: Lessons from Doro

<http://mobihealthnews.com/2336/designing-mobiles-for-seniors-lessons-from-doro/>

Get Healthier using your Mobile Phone

<http://thesweetsmellofsuccess.wordpress.com/2009/06/01/get-smart-using-mobile-phone-for-wellness/>

iPhone Medicine Blog

<http://iphonemedicine.blogspot.com/>

Implementation of telehealth support for patients with type 2 diabetes using insulin treatment: an exploratory study

<http://www.ingentaconnect.com/content/rmp/ipc/2009/00000017/00000001/art00007>

Telehomecare project to improve delivery of services in Yukon

<http://telehealthcanada.blogspot.com/2009/05/telehomecare-project-to-improve.html>

Healthcare via Cell Phones: A Systematic Review

<http://www.liebertonline.com/doi/abs/10.1089/tmj.2008.0099>

World Health Day: Mobile Technology Revolutionizes Healthcare Delivery In Developing World

http://www.huffingtonpost.com/2009/04/07/world-health-day-mobile-t_n_184149.html

Diabetes patients linked by BlackBerry

<http://www.canada.com/Health/Diabetes+patients+linked+BlackBerry/1346708/story.html>

Three ways to manage swine flu through mHealth

<http://mobihealthnews.com/1767/three-ways-to-manage-swine-flu-through-mhealth/>

MyGlucoHealth Uses Bluetooth Technology to Upload and Manage Blood Glucose Testing Using a Mobile Phone or PC

http://www.marketwatch.com/news/story/new-wireless-telehealth-solution-diabetics/story.aspx?guid=%7B86073D4F-64C0-4F2A-B581-5908B71A104D%7D&dist=msr_2

Mobile telehealth – some UK examples

<http://3g4g.blogspot.com/2009/04/mobile-healthcare-more-on-telehealth.html>

Cellphones help track patients on cardiac rehab – Australian Trial

About 200 patients and a series of medical mentors based in three Brisbane hospitals will be involved in the trial. Fewer than 20 per cent of patients treated for a heart attack complete the recommended six-week rehabilitation program.

The researchers are testing whether modern communications technology can be used as an assessment tool in home-based management of medical conditions.

The mobile phones include a built-in accelerator that measures physical activity such as the number of steps walked. The patients also use the phone to record data from blood pressure monitors and scales.

Participants are encouraged to take photos of meals they eat or videos of themselves exercising, and use an electronic diary on the phone to record observations about their stress levels, diet, smoking and alcohol intake.

The information is sent to a central computer where it can be viewed by a mentor, who assesses the patient's behaviour, provides feedback and sets new goals.

A small subset of the group is also testing home use of a heart-rate monitor while exercising. The data is transferred to the phone automatically via Bluetooth.

If successful, the approach could be used by patients who live in remote areas or have commitments that make hospital visits difficult.

<http://www.cbc.ca/health/story/2009/05/04/cardiac-rehab-cellphone.html>

d) Long term conditions

Tackling the heart failure inequality gap in Birmingham (video)

<http://www.hsj.co.uk/5001857.article>

Interim HealthCare's "Living with Heart Failure at Home" Program Designed to Improve Patient Health, Reduce Hospital Readmissions

<http://www.interimhealthcare.com/news/articles/090511-LivingWithHeartFailureProgram.aspx>

e) Smart homes

By 2013: 39% of senior communities will be "smart homes"

<http://mobihealthnews.com/2371/by-2013-39-of-senior-communities-will-be-smart-homes/>

Video: UK i-house (Medilink West Midlands)

www.localgov.tv

f) Disease management

The Effects of a Disease Management Program on Self-Reported Health Behaviors and Health Outcomes: Evidence From the "Florida: A Healthy State (FAHS)" Medicaid Program

<http://heb.sagepub.com/cgi/content/abstract/36/3/505>

g) eHealth

KoolDocs.com, Leading Provider of Online Doctor Consultations, Launches New Website

<http://www.prweb.com/releases/2009/06/prweb2485764.htm>

Effects of Web- and Computer-Based Smoking Cessation Programs

<http://archinte.ama-assn.org/cgi/content/abstract/169/10/929>

An e-Health System for the Elderly (Butler Project): A Pilot Study on Acceptance and Satisfaction

<http://www.liebertonline.com/doi/abs/10.1089/cpb.2008.0325>

Designing and Testing a Web-Based Interface for Self-monitoring of Exercise and Symptoms for Older Adults With Chronic Obstructive Pulmonary Disease

http://journals.lww.com/cinjournal/Abstract/2009/05000/Designing_and_Testing_a_Web_Based_Interface_for.10.aspx

Impact of Mailed and Automated Telephone Reminders on Receipt of Repeat Mammograms: A

Randomized Controlled Trial

[http://www.sciencedirect.com/science?_ob=ArticleURL&_udi=B6VHT-4W207FJ-2&_user=10&_coverDate=06%2F30%2F2009&_rdoc=2&_fmt=high&_orig=browse&_srch=docinfo\(%23toc%236075%232009%23999639993%231114069%23FLA%23display%23Volume\)&_cdi=6075&_sort=d&_docanchor=&_ct=16&_acct=C000050221&_version=1&_urlVersion=0&_userid=10&md5=8c5814d1cf1738cc730d23ced7a2fe65](http://www.sciencedirect.com/science?_ob=ArticleURL&_udi=B6VHT-4W207FJ-2&_user=10&_coverDate=06%2F30%2F2009&_rdoc=2&_fmt=high&_orig=browse&_srch=docinfo(%23toc%236075%232009%23999639993%231114069%23FLA%23display%23Volume)&_cdi=6075&_sort=d&_docanchor=&_ct=16&_acct=C000050221&_version=1&_urlVersion=0&_userid=10&md5=8c5814d1cf1738cc730d23ced7a2fe65)

Socio-technical and organizational challenges to wider e-Health implementation

<http://crd.sagepub.com/cgi/content/abstract/6/2/91>

Bringing Health Care Online

<http://physician-assistant.advanceweb.com/editorial/content/editorial.aspx?CC=151638>

EU Project Empowers Elderly to Live Independently

Researchers in the EU-funded PERSONA (Perceptive spaces promoting independent aging) project are drawing on a range of advanced technologies to empower the elderly and support them in their efforts to maintain both their independence and a good quality of life.

Over EUR 6 million of the project's EUR 11.6 million budget comes from the 'Information Society Technologies' Thematic area of the Sixth Framework Programme (FP6). PERSONA began in 2007 and is scheduled to run until 2010.

The concept of Ambient Assisted Living (AAL) refers to the range of technologies and services, particularly those based on Information and Communication Technologies (ICTs), that can be used to help the elderly remain independent and maintain a good quality of life.

The technologies developed by PERSONA are set to undergo tests at three sites in Denmark, Spain and Italy.

<http://www.ehealthnews.eu/content/view/1601/27/>

h) Other

Study: Videos Help Prepare for End-of-Life Care

<http://www.time.com/time/health/article/0,8599,1901734,00.html>

The World's Smallest Pocket Sized Ultrasound

<http://trendsupdates.com/signos-the-worlds-smallest-pocket-sized-ultrasound/>

Emergency Rooms Go Wireless (video)

<http://gadgetmu.com/computer-gadget/emergency-rooms-go-wireless.html>

It's People, Process and Technology - in That Order

<http://www.ehealthserver.com/research-and-development/181-its-people-process-and-technology-in-that-order>

ElderGames targets silver surfers

http://www.ehealthurope.net/news/4876/eldergames_targets_silver_surfers

Vitality sensor for the Nintendo Wii

Nintendo have announced at the E3 Expo that they will be releasing a pulse oximetry attachment for the Wii. They are calling it the Wii Vitality Sensor and announced that the device will "initially sense the user's pulse and a number of other signals being transmitted by their bodies."



http://www.medgadget.com/archives/2009/06/wii_makes_pulse_oximetry_fun.html

http://www.businesswire.com/portal/site/home/permalink/?ndmViewId=news_view&newsId=20090602005750&newsLang=en

Use of Blackberry for community policing – secure access to records

Thames Valley Police have transformed the effectiveness of community policing with a Blackberry Smartphone solution allowing frontline workers instant access to key information whenever and wherever they are. Officers have cut travel time to and from the office by 30 minutes a day, freeing up time to spend in the community and deliver a better, more responsive service to citizens.

<http://www.localgov.tv/cqi-bin/details.pl?action=pre&id=598>

Ideal Life Offers Bluetooth-Enabled 'Chair Scale'

<http://www.tradingmarkets.com/.site/news/Stock%20News/2290537/>

Pervasive Healthcare Computing

<http://www.hc2d.co.uk/content.php?contentId=11062>

Smart Toilets: Doctors in Your Bathroom

Singularity Hub
A Blog About the Singularity
Longevity, Nanotech, Robotics, Genetics, AI, The Brain...

HOME ADVERTISE JOBS ABOUT ARCHIVE CONTACT

Smart Toilets: Doctors in Your Bathroom
Written on May 12, 2009 - 11:12 am | by Aaron Saenz |

3 tweets

To those unfamiliar with Japanese culture, certain trends may seem unusual: manga and anime, the love affair with robotics, tea ceremonies... computerized talking toilets. Yeah, Americans don't often run into those. So get the jokes out of the way (we all get one, just one), shrug off the discomfort, and let's sit down and talk toilet.

Toto's new Intelligence Toilet II monitors weight, blood sugar levels, and other vital signs, transferring data to your computer for analysis via WiFi.

Toto's newest smart john, the Intelligence Toilet II, is proving that it is more than an ordinary porcelain throne by recording and analyzing important data like weight, BMI, blood pressure, and blood sugar levels.

There's a "sample catcher" in the bowl that can obtain urine samples. Even by Japanese standards that's impressive. Yes it has the bidet, the air dryer, and heated seat, but it's also recording pertinent information. This information is beamed to your computer via WiFi and can help you, with the guidance of a trained physician, monitor health and provide early detection for some medical conditions. Graphs on your desktop PC will show how your glucose levels have been fluctuating, along with urine temperatures. These trends can help diabetics time insulin shots as well as give insight into hormone levels for women concerned with their menstrual cycles. Trying to have a

Subscribe To RSS Follow Us On Twitter Subscribe To Email Join Our Facebook Page

Search : 1291 readers BY FEEDBURNER

Popular Posts

- Tweetbomb - A Tweet To Shake The World
- Researchers Produce Red Blood Cells From Stem Cells
- MIT and the Constant Robotic Gardeners
- Brain-doping At The Lab Bench
- 3D Printing and Self-Replicating Machines In Your Living Room - Seriously!
- A Review of the Best Robots of 2008

Categories

- artificial intelligence
- bionic body
- brain
- computing
- genetics
- longevity
- medical
- nanotechnology

Ads by Google

Smart Group Event Support
Luxury Mobile Toilets, Colodrooms, Storage and Marquee Hire for London
www.smarteventssupport.co.uk

Luxury mobile toilet hire
Mobile toilets to hire for Prestigious parties and weddings.
www.luxurytoos.co.uk

Public Toilet Strategy
Download the Government Public Toilet Strategy here
healthmedic.com

Toilet
Massive range of famous brand bathrooms at discount prices
www.OnlineBathrooms.com

<http://singularityhub.com/2009/05/12/smart-toilets-doctors-in-your-bathroom/>

Mediclim
Connecting your Health to the Weather

About Us | Message Board | My Mediclim | Background | Blog | Contact | FAQs

Username:
Password:
login

Forgot your Password or Username? Click here

Are you having problems with the Site? Use our Login Click here

SIGN UP!
It's FREE and easy!

The Weather Health Index

Feeling under the weather? Do you or someone you know suffer from MIGRAINE, HEART DISEASE, ASTHMA, ARTHRITIS or DIABETES? Mediclim® can help.

Sign up to Mediclim® for FREE and you will begin to get email alerts the day before your health problem may be aggravated due to changes in the weather. You will also gain access to our forums where you can meet people with health problems similar to your own. Mediclim is a FREE service currently available to everyone in Canada, the USA (lower 48 states), the UK and Ireland.

Read our guest blog posts

Gilmore E. Gillman - Postcodes
David Suzuki - Science Funding
Steve Wilson - Film Musician

The Buzz on Mediclim

Dr. John Bart discussed Mediclim with Jane Hawtin live on the CBC radio show (audio download) discussion discussed on the Zoomer report on Classical Radio, Toronto.

Connecting your health to the weather: <http://www.mediclim.com/>

Philips plans new health regime

http://www.ft.com/cms/s/0/605f078a-43c7-11de-a9be-00144feabdc0.html?nclick_check=1

Darzi quality indicators published

http://www.e-health-insider.com/news/4846/darzi_quality_indicators_published

New York City public hospitals credit IT for health boost

<http://govhealthit.com/articles/2009/05/15/nyc-hospitals-health-it.aspx>

House Bill (USA) Would Expand Medicare Funding for Telemedicine Services

A bipartisan group of lawmakers has introduced a bill designed to increase the availability of telemedicine service..The Medicare Telehealth Enhancement Act ([HR 2068](#)) would expand Medicare reimbursement to telemedicine facilities in urban and suburban areas.

About 80% of U.S. residents do not have access to telemedicine facilities because of restrictions that limit funding for such facilities to rural areas, according to the bill's author.

The bill also would allow doctors to monitor patients remotely and would provide \$30 million in grant funding to help health care facilities purchase telehealth equipment and expand telemedicine support services.

<http://www.ihealthbeat.org/Articles/2009/4/27/House-Bill-Would-Expand-Medicare-Funding-for-Telemedicine-Services.aspx>

<http://www.healthdatamanagement.com/news/telemedicine-28207-1.html>

i) Self care

Does automation sacrifice patient empowerment?

<http://mobihealthnews.com/2189/does-automation-sacrifice-patient-empowerment/>

j) Events

2009 Baltic e-health conference announced

http://www.ehealthurope.net/news/4885/2009_baltic_e-health_conference_announced

10 Events

Date	Event Title	Network	Places Remaining	Book
10/06/09	South West Regional Housing LIN Annual Conference - 'Tools for Change'	Housing	7 of 160	Registration Closed
11/06/09	Whole System Demonstrator Programme (WSDAN) - Integrated care using telecare and telehealth – Leeds	Telecare LIN	3 of 120	Book now
17/06/09	Carers and personalisation - Birmingham	Personalisation	Reserve places available	Add me to the reserve list
18/06/09 to 19/06/09	Transforming Community Equipment - Project Manager's Induction Course	Care Services Efficiency Delivery	-	N/A
23/06/09	Resource Allocation System - Holiday Inn Camden Lock - London	Personalisation	6 of 50	Book now
25/06/09	Carers and personalisation - Manchester	Personalisation	10 of 120	Book now
25/06/09	North West Regional Housing LIN Meeting	Housing	3 of 35	Book now
26/06/09	Lifetime Homes, Lifetime Neighbourhoods - Housing for an Ageing Society	Housing	-	N/A
30/06/09	Carers and personalisation - London	Personalisation	FULL	FULL
30/06/09	Eastern Regional Housing LIN Meeting	Housing	26 of 35	Book now
06/07/09	East Midlands Regional Housing LIN Meeting	Housing	22 of 45	Book now
09/07/09	Improving End of Life Care in Older People's Housing - Is it that time already?	Housing	Reserve places available	Add me to the reserve list
09/07/09	West Midlands Regional Housing LIN Meeting	Housing	34 of 35	Book now
06/08/09 to 07/08/09	Transforming Community Equipment - Project Managers' Induction Course	Care Services Efficiency Delivery	-	N/A

22/09/09	Resource Allocation System - Holiday Inn Camden Lock - London	Personalisation	26 of 50	Book now
22/10/09	West Midlands Regional Housing LIN Meeting	Housing	35 of 35	Book now

Latest events as at 7 June 2009 <http://www.dhcarenetworks.org.uk/events/s/>.

WSDAN Events:

11 June 2009 – Leeds (see events planner)

10 September 2009 – Bristol (booking opens later in June 2009)

The Foundation for Assistive Technology (FAST) provides a full listing of forthcoming telecare events – see <http://www.fastuk.org/services/events.php?pg=2>. Suppliers also run telecare and telehealth events – check their web sites regularly for dates.

All previous telecare eNewsletters are available at: www.dhcarenetworks.org.uk/telecarenewsletters

Glossary:

ALIP – Assisted Living Innovation Platform

AT – Assistive Technology

BERR – Business Enterprise and Regulatory Reform

CSCI – Commission for Social Care Inspection

CQC – Care Quality Commission

DCLG – Department for Communities and Local Government

FACS – Fair Access to Care Services

IB- Individualised budgets

i4i – Invention for Innovation

LIN – Learning and Improvement Network

NHS CfH – NHS Connecting for Health

NHS PASA – NHS Purchasing and Supply Agency

POPP – Partnership for Older Peoples Projects

PT Grant or PTG – Preventative Technology Grant

SCIE – Social Care Institute for Excellence

TSA – Telecare Services Association

TSB – Technology Strategy Board

WSDAN – Whole System Demonstrator (Long Term Conditions) Action Network

Appendix – PCTs and Telehealth links

PCTs in England (n=152) with telehealth links on the internet.

PCT Area	Link
<u>Ashton, Leigh and Wigan PCT</u>	http://www.alwpct.nhs.uk/Publications/Other%20publications/Board/Operating%20Plan%20Final%2009.pdf
<u>Barking and Dagenham PCT</u>	http://www.supply2health.nhs.uk/5NA/Lists/Advertisements/DispForm.aspx?ID=1
<u>Barking and Dagenham PCT</u>	http://www.localgov.co.uk/view/docs/awards2008/partneringhealth/commends/Barking.pdf
<u>Barking and Dagenham PCT</u>	http://www.dhcarenetworks.org.uk/library/Resources/Telecare/Telecare_Outcomes/Performance2008/Telecare_-_mainstreaming_and_outcomes_-_29_December_2008_Telehealth.doc
<u>Barnet PCT</u>	
<u>Barnsley PCT</u>	http://www.barnsleyrd.nhs.uk/downloads/press%20release.pdf
<u>Barnsley PCT</u>	http://www.medicalnewstoday.com/articles/127498.php
<u>Barnsley PCT</u>	http://www.mtbeurope.info/news/2006/603025.htm
<u>Barnsley PCT</u>	http://www.youtube.com/watch?gl=GB&hl=en-GB&v=E2W6V6_xL6s
<u>Barnsley PCT</u>	http://www.connectingforhealth.nhs.uk/factsandfiction/patientcases/telehealth
<u>Barnsley PCT</u>	http://www.wsdactionnetwork.org.uk/news/wsdan_progress/the_telecare_and.html
<u>Barnsley PCT</u>	http://www.chmi.port.ac.uk/sihi/sihi2006/proceed/AdrianFlowerday.ppt
<u>Barnsley PCT</u>	http://www.nrr.nhs.uk/2007AnnualReports/Section2A.asp?O=715
<u>Barnsley PCT</u>	http://www.jitscotland.org.uk/downloads/1219664895-99-Telecare%20Factsheet%20-%20Telehealth.pdf
<u>Barnsley PCT</u>	http://www.ehiprimarycare.com/news/4654/telehealthcare_project_details_published
<u>Barnsley PCT</u>	http://www.laboratorymedicine.nhs.uk/labmedicine/Portals/0/PathITConference/MainProgramme/Pathology%20Summit_AndrewFlowerday.ppt
<u>Barnsley PCT</u>	http://www.dhcarenetworks.org.uk/library/Resources/Telecare/Support_materials/Telecare_Supplement_March_2009.pdf
<u>Barnsley PCT</u>	http://www.youtube.com/watch?v=E2W6V6_xL6s
<u>Bassetlaw PCT</u>	
<u>Bath and North East Somerset PCT</u>	http://www.dhcarenetworks.org.uk/library/Resources/Telecare/Telecare_Outcomes/Performance2008/Telecare_-_mainstreaming_and_outcomes_-_29_December_2008_Telehealth.doc
<u>Bedfordshire PCT</u>	http://www.dhcarenetworks.org.uk/library/Resources/Telecare/Telecare_Outcomes/Performance2008/Telecare_-_mainstreaming_and_outcomes_-_29_December_2008_Telehealth.doc

<u>Berkshire East PCT</u>	http://www.dhcarenetworks.org.uk/library/Resources/Telecare/Telecare_Outcomes/Performance2008/Telecare - mainstreaming and outcomes - 29 December 2008 Telehealth.doc
<u>Berkshire West PCT</u>	http://www.dhcarenetworks.org.uk/library/Resources/Telecare/Telecare_Outcomes/Performance2008/Telecare - mainstreaming and outcomes - 29 December 2008 Telehealth.doc
<u>Bexley Care Trust</u>	
<u>Birmingham East and North PCT</u>	http://www.jitscotland.org.uk/downloads/1219664895-99-Telecare%20Factsheet%20-%20Telehealth.pdf
<u>Birmingham East and North PCT</u>	http://www.ehiprimarycare.com/news/4654/telehealthcare_project_details_published
<u>Birmingham East and North PCT</u>	http://www.wsdactionnetwork.org.uk/news/wsdan_progress/the_telecare_and.html
<u>Birmingham East and North PCT</u>	http://www.hiicsg.bcs.org/~careadmin/16_October_Telehealth_Seminar_Pfizer.ppt
<u>Birmingham East and North PCT</u>	http://www.ehiprimarycare.com/news/swindon_takes_telehealth_to_mainstream
<u>Birmingham East and North PCT</u>	http://www.medetel.lu/download/2008/parallel_sessions/presentation/day2/telehealth_support.pdf
<u>Birmingham East and North PCT</u>	http://www.blackpool.gov.uk/democracy/members/admin/files/a4034a9b-6843-481e-8486-c42bb5035d90/Leader%20of%20the%20Council%20Report.doc
<u>Birmingham East and North PCT</u>	http://www.ehealth.ed.ac.uk/presentations/jun2008/Matt%20Marshall%20(Tunstall)%20Implementing%20Telecare.ppt
<u>Blackburn With Darwen PCT</u>	http://www.dhcarenetworks.org.uk/library/Resources/Telecare/Telecare_Outcomes/Performance2008/Telecare - mainstreaming and outcomes - 29 December 2008 Telehealth.doc
<u>Blackpool PCT</u>	http://www.vitaline.org.uk/telehealth.htm
<u>Blackpool PCT</u>	http://www.blackpoolgazette.co.uk/daily-feature/Home-comforter.4955663.jp
<u>Blackpool PCT</u>	http://www.blackpool.nhs.uk/images/uploads/latest-publications/CSP_1.0_FINAL_.pdf
<u>Blackpool PCT</u>	http://www.ehealth.ed.ac.uk/presentations/jun2008/Matt%20Marshall%20(Tunstall)%20Implementing%20Telecare.ppt

<u>Blackpool PCT</u>	http://www.dhcarenetworks.org.uk/library/Resources/Telecare/Telecare_Outcomes/Performance2008/Telecare - mainstreaming and outcomes - 29 December 2008 Telehealth.doc
<u>Bolton PCT</u>	http://democracy.bolton.gov.uk/CMISWebPublic/Binary.ashx?Document=3617
<u>Bolton PCT</u>	http://www.ontargetmag.com/article.aspx?issueID=117&articleID=846
<u>Bolton PCT</u>	http://democracy.bolton.gov.uk/CMISWebPublic/Binary.ashx?Document=5749
<u>Bolton PCT</u>	http://www.dhcarenetworks.org.uk/library/Resources/Telecare/Telecare_Outcomes/Performance2008/Telecare - mainstreaming and outcomes - 29 December 2008 Telehealth.doc
<u>Bournemouth and Poole Teaching PCT</u>	http://www.dhcarenetworks.org.uk/library/Resources/Telecare/Telecare_Outcomes/Performance2008/Telecare - mainstreaming and outcomes - 29 December 2008 Telehealth.doc
<u>Bradford and Airedale Teaching PCT</u>	http://www.jitscotland.org.uk/downloads/1219664895-99-Telecare%20Factsheet%20-%20Telehealth.pdf
<u>Bradford and Airedale Teaching PCT</u>	http://www.teis.port.ac.uk/jsp/search/activity.jsp;jsessionid=05238AEDF0E0661C3148C6C9DDEB8F67?project=1386
<u>Bradford and Airedale Teaching PCT</u>	http://www.dhcarenetworks.org.uk/library/Resources/Telecare/Telecare_Outcomes/Performance2008/Telecare - mainstreaming and outcomes - 29 December 2008 Telehealth.doc
<u>Brent Teaching PCT</u>	http://www.chmi.port.ac.uk/sihi/sihi2006/proceed/AdrianFlowerday.ppt
<u>Brighton and Hove City PCT</u>	http://www.southdowns.nhs.uk/downloads/sdhWeb/patients_and_carers/Telehealth New sletter SDHT CRDS 01.2009 v1.pdf
<u>Brighton and Hove City PCT</u>	http://www.dhcarenetworks.org.uk/library/Resources/Telecare/Telecare_Outcomes/Performance2008/Telecare - mainstreaming and outcomes - 29 December 2008 Telehealth.doc
<u>Bristol PCT</u>	
<u>Bromley PCT</u>	
<u>Buckinghamshire PCT</u>	
<u>Bury PCT</u>	http://www.tunstall.co.uk/assets/literature/Bury%20case%20study.pdf
<u>Bury PCT</u>	http://www.dhcarenetworks.org.uk/library/Resources/Telecare/Telecare_Outcomes/Performance2008/Telecare - mainstreaming and outcomes - 29 December 2008 Telehealth.doc
<u>Calderdale PCT</u>	http://www.slideshare.net/3GDR/engineering-better-health
<u>Calderdale PCT</u>	http://www.dhcarenetworks.org.uk/library/Resources/Telecare/Telecare_Outcomes/Performance2008/Telecare - mainstreaming and outcomes - 29 December 2008 Telehealth.doc

<u>Cambridgeshire PCT</u>	http://www.dhcarenetworks.org.uk/library/Resources/Telecare/Telecare_Outcomes/Performance2008/Telecare - mainstreaming and outcomes - 29 December 2008 Telehealth.doc
<u>Camden PCT</u>	http://www.allmediascotland.com/allnewswire/4684/Telehealth Investment in Camden
<u>Camden PCT</u>	http://www.ehealth.ed.ac.uk/presentations/jun2008/Matt%20Marshall%20(Tunstall)%20Implementing%20Telecare.ppt
<u>Camden PCT</u>	http://www.dhcarenetworks.org.uk/library/Resources/Telecare/Telecare_Outcomes/Performance2008/Telecare - mainstreaming and outcomes - 29 December 2008 Telehealth.doc
<u>Central and Eastern Cheshire PCT</u>	http://www.ehiprimarycare.com/news/item.cfm?ID=2152
<u>Central and Eastern Cheshire PCT</u>	http://www.dhcarenetworks.org.uk/library/Resources/Telecare/Telecare_Outcomes/Performance2008/Telecare - mainstreaming and outcomes - 29 December 2008 Telehealth.doc
<u>Central and Eastern Cheshire PCT</u>	http://www.ehealth.ed.ac.uk/presentations/jun2008/Matt%20Marshall%20(Tunstall)%20Implementing%20Telecare.ppt
<u>Central Lancashire PCT</u>	http://www.ehiprimarycare.com/news/4654/telehealthcare_project_details_published
<u>Central Lancashire PCT</u>	http://www.wsdactionnetwork.org.uk/news/wsdan_progress/the_telecare_and.html
<u>Central Lancashire PCT</u>	http://www.dhcarenetworks.org.uk/library/Resources/Telecare/Telecare_Outcomes/Performance2008/Telecare - mainstreaming and outcomes - 29 December 2008 Telehealth.doc
<u>Central Lancashire PCT</u>	http://www.lancashire.gov.uk/corporate/news/press_releases/y/m/release.asp?id=200807&r=PR08/0462
<u>City and Hackney Teaching PCT</u>	http://www.chooseindependence.org/forum/news.asp
<u>City and Hackney Teaching PCT</u>	http://www.chubbcommunitycare.co.uk/case-studies/telecare-in-hackney/
<u>City and Hackney Teaching PCT</u>	http://www.laboratorymedicine.nhs.uk/labmedicine/Portals/0/PathITConference/MainProgramme/Pathology%20Summit AndrewFlowerday.ppt
<u>City and Hackney Teaching PCT</u>	http://www.dhcarenetworks.org.uk/library/Resources/Telecare/Support_materials/Telecare Supplement March 2009.pdf
<u>City and Hackney Teaching PCT</u>	http://www.youtube.com/watch?v=KRVfVAWg5Bg

City and Hackney Teaching PCT	http://www.dhcarenetworks.org.uk/library/Resources/Telecare/Telecare_Outcomes/Performance2008/Telecare - mainstreaming and outcomes - 29 December 2008 Telehealth.doc
Cornwall and Isles Of Scilly PCT	http://www.jitscotland.org.uk/downloads/1219664895-99-Telecare%20Factsheet%20-%20Telehealth.pdf
Cornwall and Isles Of Scilly PCT	http://www.hsj.co.uk/telehealth-takes-off/93656.article
Cornwall and Isles Of Scilly PCT	http://www.openpr.com/news/44478/Cornish-patients-to-lead-way-in-UK-s-largest-Telehealth-trial.html
Cornwall and Isles Of Scilly PCT	http://www.openpr.com/pdf/44478/Cornish-patients-to-lead-way-in-UK-s-largest-Telehealth-trial.pdf
Cornwall and Isles Of Scilly PCT	http://www.cornwallandislesofscilly.nhs.uk/CornwallAndIslesOfScillyPCT/PatientAndVisitors/Initiatives/WholeSystemDemonstratorPilot/HowItWorks.aspx
Cornwall and Isles Of Scilly PCT	http://www.tunstall.co.uk/assets/literature/Telehealth%20Event%20Flyer%20-%20Wales.pdf
Cornwall and Isles Of Scilly PCT	http://www.e-health-insider.com/comment_and_analysis/278/2008:the_year_telecare_grows_up_tcg
Cornwall and Isles Of Scilly PCT	http://www.publications.parliament.uk/pa/cm200708/cmhansrd/cm080507/text/80507w0029.htm
Cornwall and Isles Of Scilly PCT	http://www.dhcarenetworks.org.uk/library/Resources/Telecare/Telecare_Outcomes/Performance2008/Telecare - mainstreaming and outcomes - 29 December 2008 Telehealth.doc
Cornwall and Isles Of Scilly PCT	http://hubola.kingsfund.org.uk/document.rm?id=8255
Cornwall and Isles Of Scilly PCT	http://hubola.kingsfund.org.uk/document.rm?id=8265
County Durham PCT	http://www.dhcarenetworks.org.uk/library/Resources/Telecare/Telecare_Outcomes/Performance2008/Telecare - mainstreaming and outcomes - 29 December 2008 Telehealth.doc
Coventry Teaching PCT	
Croydon PCT	

<u>Cumbria Teaching PCT</u>	http://www.alstonhealthcare.co.uk/Resource/CMS/Assets/1eec3c0c-7d2c-102b-81f8-003005bbceb4/alston%20healthcare%20newsletter%20sept%2008%20v2.pdf
<u>Cumbria Teaching PCT</u>	http://www.ict-ageing.eu/?page_id=427
<u>Cumbria Teaching PCT</u>	http://www.ehealth.ed.ac.uk/presentations/jun2008/Matt%20Marshall%20(Tunstall)%20Implementing%20Telecare.ppt
<u>Darlington PCT</u>	http://www.darlington.gov.uk/PublicMinutes/Health%20and%20Well%20Being%20Scrutiny%20Committee/January%2020%202009/Item%208.pdf
<u>Darlington PCT</u>	http://www.darlingtonpct.nhs.uk/newsStory.asp?newsId=571
<u>Darlington PCT</u>	http://www.dhcarenetworks.org.uk/_library/Resources/Telecare/Telecare_Outcomes/Performance2008/Telecare_-_mainstreaming_and_outcomes_-_29_December_2008_Telehealth.doc
<u>Derby City PCT</u>	
<u>Derbyshire County PCT</u>	http://www.housingexcellence.co.uk/features/keeping-telecare-line
<u>Devon PCT</u>	http://www.devonsp.org.uk/sustainablecommunitystrategy/outcomes/draftlaapriorities/laa10-telecare.doc
<u>Devon PCT</u>	http://www.dhcarenetworks.org.uk/_library/Resources/Telecare/Telecare_Outcomes/Performance2008/Telecare_-_mainstreaming_and_outcomes_-_29_December_2008_Telehealth.doc
<u>Devon PCT</u>	http://www.devon.gov.uk/es/doc-tunnel-4.pdf?url=/dcc/committee/reports/acs0822.pdf
<u>Doncaster PCT</u>	http://www.rcplondon.ac.uk/clinical-standards/ceeu/Current-work/ncrop/Documents/Report-of-the-National-COPD-Audit-2008-UK-Primary-Care-Organisations-Resources-and-Organisation-of-Care.pdf
<u>Doncaster PCT</u>	http://www.doncasterpct.nhs.uk/documents/DoncasterPCTCompetencysummarybullets.doc
<u>Doncaster PCT</u>	http://www.ehealth.ed.ac.uk/presentations/jun2008/Matt%20Marshall%20(Tunstall)%20Implementing%20Telecare.ppt
<u>Dorset PCT</u>	
<u>Dudley PCT</u>	http://www.dhcarenetworks.org.uk/_library/Resources/Telecare/Telecare_Outcomes/Performance2008/Telecare_-_mainstreaming_and_outcomes_-_29_December_2008_Telehealth.doc
<u>Ealing PCT</u>	
<u>East and North Hertfordshire PCT</u>	http://www.telecareaware.com/index.php/chorleywood-video.html
<u>East Lancashire Teaching PCT</u>	http://www.institute.nhs.uk/index.php?option=com_mtree&task=viewlink&link_id=4187&Itemid=1876

<u>East Lancashire Teaching PCT</u>	http://www.dhcarenetworks.org.uk/library/Resources/Telecare/Telecare_Outcomes/Performance2008/Telecare - mainstreaming and outcomes - 29 December 2008 Telehealth.doc
<u>East Riding Of Yorkshire PCT</u>	http://www.wsdactionnetwork.org.uk/news/wsdan_progress/the_telecare_and.html
<u>East Riding Of Yorkshire PCT</u>	http://www.ehealth.ed.ac.uk/presentations/jun2008/Matt%20Marshall%20(Tunstall)%20Implementing%20Telecare.ppt
<u>East Riding Of Yorkshire PCT</u>	http://www.institute.nhs.uk/index.php?option=com_mtree&task=viewlink&link_id=4383&Itemid=3295
<u>East Riding Of Yorkshire PCT</u>	http://www.dhcarenetworks.org.uk/library/Resources/Telecare/Telecare_Outcomes/Performance2008/Telecare - mainstreaming and outcomes - 29 December 2008 Telehealth.doc
<u>East Sussex Downs and Weald PCT</u>	http://www.institute.nhs.uk/index.php?option=com_mtree&task=viewlink&link_id=4383&Itemid=3295
<u>East Sussex Downs and Weald PCT</u>	http://www.dhcarenetworks.org.uk/library/Resources/Telecare/Telecare_Outcomes/Performance2008/Telecare - mainstreaming and outcomes - 29 December 2008 Telehealth.doc
<u>East Sussex Downs and Weald PCT</u>	http://www.eastsussexdownswealdpct.nhs.uk/about-us/news/press-releases/2008-press-releases/telehealth/
<u>Eastern and Coastal Kent PCT</u>	http://www.connectingforhealth.nhs.uk/factsandfiction/patientcases/telehealth
<u>Eastern and Coastal Kent PCT</u>	http://www.kent.gov.uk/SocialCare/health-and-wellbeing/telehealth/kent-telehealth-pilot.htm
<u>Eastern and Coastal Kent PCT</u>	http://www.jitscotland.org.uk/downloads/1219664895-99-Telecare%20Factsheet%20-%20Telehealth.pdf
<u>Eastern and Coastal Kent PCT</u>	http://www.kent.gov.uk/SocialCare/health-and-wellbeing/telehealth/
<u>Eastern and Coastal Kent PCT</u>	http://www.hsj.co.uk/telehealth-takes-off/93656.article
<u>Eastern and Coastal Kent PCT</u>	http://www.viterion.com/web_docs/TelehealthInKent.pdf
<u>Eastern and Coastal Kent PCT</u>	http://chain.ulcc.ac.uk/chain/event/telehealth/presentation_Rye.ppt
<u>Eastern and Coastal Kent PCT</u>	http://www.e-health-insider.com/comment_and_analysis/278/2008: the year telecare grows up tcg

<u>Eastern and Coastal Kent PCT</u>	http://www.kenttv.com/programmes.php?CID=27&SCID=63&PID=111&Title=The+Kent+Telehealth+Project
<u>Eastern and Coastal Kent PCT</u>	http://www.networks.nhs.uk/uploaddb/kentcountycounciltelehealthandtelecare.doc
<u>Eastern and Coastal Kent PCT</u>	http://www.medetel.lu/download/2007/parallel_sessions/presentation/0419/Delivering_Telehealth_in_Kent.pdf
<u>Eastern and Coastal Kent PCT</u>	http://news.bbc.co.uk/1/hi/england/kent/4322041.stm
<u>Eastern and Coastal Kent PCT</u>	http://www.kent.ac.uk/news/stories/telehealthtopstheagendaatuniversityofkentconference/2008
<u>Eastern and Coastal Kent PCT</u>	http://www.idea.gov.uk/idk/core/page.do?pageId=7328980
<u>Eastern and Coastal Kent PCT</u>	http://www.telecare.org.uk/files/47413/FileName/kentdemonstrator.ppt
<u>Eastern and Coastal Kent PCT</u>	http://www.egovmonitor.com/node/264
<u>Eastern and Coastal Kent PCT</u>	http://www.lgcplus.com/news/innovation-action/911605.article
<u>Eastern and Coastal Kent PCT</u>	http://www.dh.gov.uk/en/Publicationsandstatistics/Publications/PublicationsPolicyAndGuidance/Browsable/DH_5753946
<u>Eastern and Coastal Kent PCT</u>	http://www.worldhealthcareblog.org/2007/09/07/tele-medicine-tele-monitoring-and-tele-health/
<u>Eastern and Coastal Kent PCT</u>	http://212.58.226.17:8080/1/low/england/kent/4322041.stm
<u>Eastern and Coastal Kent PCT</u>	http://www.publications.parliament.uk/pa/cm200708/cmhansrd/cm080507/text/80507w0029.htm
<u>Eastern and Coastal Kent PCT</u>	http://www.thiis.co.uk/news-snippets-telecare-kent.aspx
<u>Eastern and Coastal Kent PCT</u>	http://www.improvementnetwork.gov.uk/imp/core/page.do?pageId=1068557

<u>Eastern and Coastal Kent PCT</u>	http://www.dhcarenetworks.org.uk/library/Resources/Telecare/Telecare_Outcomes/Performance2008/Telecare - mainstreaming and outcomes - 29 December 2008 Telehealth.doc
<u>Eastern and Coastal Kent PCT</u>	http://hubola.kingsfund.org.uk/document.rm?id=8265
<u>Eastern and Coastal Kent PCT</u>	http://hubola.kingsfund.org.uk/document.rm?id=8255
<u>Enfield PCT</u>	
<u>Gateshead PCT</u>	http://www.dhcarenetworks.org.uk/library/Resources/Telecare/Telecare_Outcomes/Performance2008/Telecare - mainstreaming and outcomes - 29 December 2008 Telehealth.doc
<u>Gloucestershire PCT</u>	http://www.rcplondon.ac.uk/clinical-standards/ceeu/Current-work/ncrop/Documents/Report-of-the-National-COPD-Audit-2008-UK-Primary-Care-Organisations-Resources-and-Organisation-of-Care.pdf
<u>Gloucestershire PCT</u>	http://www.dhcarenetworks.org.uk/library/Resources/Telecare/Telecare_Outcomes/Performance2008/Telecare - mainstreaming and outcomes - 29 December 2008 Telehealth.doc
<u>Gloucestershire PCT</u>	http://www.ehealth.ed.ac.uk/presentations/jun2008/Matt%20Marshall%20(Tunstall)%20Implementing%20Telecare.ppt
<u>Great Yarmouth and Waveney PCT</u>	http://www.norfolk.gov.uk/consumption/idcplg?IdcService=SS_GET_PAGE&ssDocName=NC0059633&ssSourceNodeId=&ssTargetNodeId=3870
<u>Great Yarmouth and Waveney PCT</u>	http://www.norfolk.gov.uk/consumption/idcplg?IdcService=SS_GET_PAGE&ssDocName=NC0057478&ssSourceNodeId=&ssTargetNodeId=3572
<u>Greenwich Teaching PCT</u>	http://www.ehealth.ed.ac.uk/presentations/jun2008/Matt%20Marshall%20(Tunstall)%20Implementing%20Telecare.ppt
<u>Greenwich Teaching PCT</u>	http://www.dhcarenetworks.org.uk/library/Resources/Telecare/Telecare_Outcomes/Performance2008/Telecare - mainstreaming and outcomes - 29 December 2008 Telehealth.doc
<u>Halton and St Helens PCT</u>	http://www.dhcarenetworks.org.uk/library/Resources/Telecare/Telecare_Outcomes/Performance2008/Telecare - mainstreaming and outcomes - 29 December 2008 Telehealth.doc
<u>Hammersmith and Fulham PCT</u>	http://www.iplato.net/news-appointment-reminders-and-mobile-health-promotion/press-releases/2007-press-releases/iplato-text-messaging-to-cover-165000-patients-in-hammersmith-fulham.html
<u>Hammersmith and Fulham PCT</u>	http://www.ehiprimarycare.com/News/2867/iplato_deploy_sms_to_hammersmith_and_fulham_pct
<u>Hammersmith and Fulham PCT</u>	http://www.publictechnology.net/modules.php?op=modload&name=News&file=article&sid=10421
<u>Hampshire PCT</u>	

<u>Haringey Teaching PCT</u>	http://www.rcplondon.ac.uk/clinical-standards/ceeu/Current-work/ncrop/Documents/Report-of-the-National-COPD-Audit-2008-UK-Primary-Care-Organisations-Resources-and-Organisation-of-Care.pdf
<u>Haringey Teaching PCT</u>	http://www.dhcarenetworks.org.uk/library/Resources/Telecare/Telecare_Outcomes/Performance2008/Telecare_-_mainstreaming_and_outcomes_-_29_December_2008_Telehealth.doc
<u>Harrow PCT</u>	
<u>Hartlepool PCT</u>	http://www.dhcarenetworks.org.uk/library/Resources/Telecare/Telecare_Outcomes/Performance2008/Telecare_-_mainstreaming_and_outcomes_-_29_December_2008_Telehealth.doc
<u>Hastings and Rother PCT</u>	
<u>Havering PCT</u>	http://www.supply2health.nhs.uk/5NA/Lists/Advertisements/DispForm.aspx?ID=1
<u>Havering PCT</u>	http://www.haveringpct.nhs.uk/ngen_public/default.asp?id=114
<u>Havering PCT</u>	http://www.haveringpct.nhs.uk/docimages/205.pdf
<u>Heart Of Birmingham Teaching PCT</u>	
<u>Herefordshire PCT</u>	
<u>Heywood, Middleton and Rochdale PCT</u>	http://www.dhcarenetworks.org.uk/library/Resources/Telecare/Telecare_Outcomes/Performance2008/Telecare_-_mainstreaming_and_outcomes_-_29_December_2008_Telehealth.doc
<u>Hillingdon PCT</u>	
<u>Hounslow PCT</u>	http://www.hounslowpct.nhs.uk/documents/E2DraftOlderPeopleCommissioningStrategy20072010.pdf
<u>Hounslow PCT</u>	http://ec.europa.eu/information_society/events/telehealth_2007/docs/telehealth2007flowerday.pdf
<u>Hounslow PCT</u>	http://www.laboratorymedicine.nhs.uk/labmedicine/Portals/0/PathITConference/MainProgramme/Pathology%20Summit_AndrewFlowerday.ppt
<u>Hull Teaching PCT</u>	http://www.chmi.port.ac.uk/sihi/sihi2006/proceed/AdrianFlowerday.ppt
<u>Hull Teaching PCT</u>	http://www.wsdactionnetwork.org.uk/news/wsdan_progress/the_telecare_and.html
<u>Hull Teaching PCT</u>	http://www.tunstall.co.uk/assets/literature/Telecare%20Times%20issue%2028.pdf
<u>Hull Teaching PCT</u>	http://www.laboratorymedicine.nhs.uk/labmedicine/Portals/0/PathITConference/MainProgramme/Pathology%20Summit_AndrewFlowerday.ppt
<u>Hull Teaching PCT</u>	http://ec.europa.eu/information_society/events/telehealth_2007/docs/telehealth2007flowerday.pdf

Hull Teaching PCT	http://www.broadbandcapital.co.uk/index.php?option=com_content&task=view&id=31&Itemid=51
Hull Teaching PCT	https://web5.hullcc.gov.uk/akshull/images/att3203.doc
Hull Teaching PCT	http://www.ehprimarycare.com/news/walsall_and_hull_begin_mass_telehealth_deployments
Hull Teaching PCT	http://www.prlog.org/10040888-walsall-and-hull-launch-mainstream-deployments-of-telehealth-for-copd-and-congestive-heart-failure.html
Hull Teaching PCT	http://www.connectyorkshire.org/news/general/305632
Hull Teaching PCT	http://www.hchfh.org.uk/index.php?option=com_content&task=view&id=15&Itemid=30
Hull Teaching PCT	http://www.bjhcm.co.uk/features/2008/811003.htm
Hull Teaching PCT	http://www.hoise.com/vmw/08/articles/vmw/LV-VM-01-08-15.html
Hull Teaching PCT	http://www.ehealth.ed.ac.uk/presentations/jun2008/Matt%20Marshall%20(Tunstall)%20Implementing%20Telecare.ppt
Hull Teaching PCT	http://www.reuters.com/article/pressRelease/idUS113647+06-Dec-2007+BW20071206
Hull Teaching PCT	http://www.dhcarenetworks.org.uk/library/Resources/Telecare/Support_materials/Telecare_Supplement_March_2009.pdf
Hull Teaching PCT	http://www.youtube.com/watch?v=eCJ0tCCraOQ
Hull Teaching PCT	http://www.dhcarenetworks.org.uk/library/Resources/Telecare/Telecare_Outcomes/Performance2008/Telecare_-_mainstreaming_and_outcomes_-_29_December_2008_Telehealth.doc
Isle Of Wight NHS PCT	
Islington PCT	
Kensington and Chelsea PCT	http://www.dhcarenetworks.org.uk/library/Resources/Telecare/Telecare_Outcomes/Performance2008/Telecare_-_mainstreaming_and_outcomes_-_29_December_2008_Telehealth.doc
Kingston PCT	
Kirklees PCT	http://www.digitv.gov.uk/site/content/view/124/60/
Kirklees PCT	http://www.digitv.gov.uk/wiki/download/attachments/8552494/DigiTV+Telehealth-Telecare+projects.pptx
Kirklees PCT	http://www.kirklees.nhs.uk/fileadmin/documents/meetings/march09/KPCT-09-62%20Minutes%20of%20the%20Governance%20Committee%20held%2027.01.09%20_Final_.pdf
Kirklees PCT	http://www.ehprimarycare.com/News/4162/new_government_funding_for_telecare

<u>Kirklees PCT</u>	http://www.dhcarenetworks.org.uk/library/Resources/Telecare/Telecare_Outcomes/Performance2008/Telecare - mainstreaming and outcomes - 29 December 2008 Telehealth.doc
<u>Knowsley PCT</u>	http://wikid.wikispaces.com/file/view/Carole+Bayliss.ppt
<u>Knowsley PCT</u>	http://www.knowsley.gov.uk/pdf/Accommodation_support_strategy.pdf
<u>Knowsley PCT</u>	http://www.ehealth.ed.ac.uk/presentations/jun2008/Matt%20Marshall%20(Tunstall)%20Implementing%20Telecare.ppt
<u>Knowsley PCT</u>	http://www.dhcarenetworks.org.uk/library/Resources/Telecare/Telecare_Outcomes/Performance2008/Telecare - mainstreaming and outcomes - 29 December 2008 Telehealth.doc
<u>Lambeth PCT</u>	http://www.dhcarenetworks.org.uk/library/Resources/Telecare/Telecare_Outcomes/Performance2008/Telecare - mainstreaming and outcomes - 29 December 2008 Telehealth.doc
<u>Leeds PCT</u>	http://www.wsactionnetwork.org.uk/news/wsdan_progress/the_telecare_and.html
<u>Leeds PCT</u>	http://www.tunstall.co.uk/assets/literature/Leeds%20case%20study.pdf
<u>Leeds PCT</u>	http://www.ehealth.ed.ac.uk/presentations/jun2008/Matt%20Marshall%20(Tunstall)%20Implementing%20Telecare.ppt
<u>Leeds PCT</u>	http://www.dhcarenetworks.org.uk/library/Resources/Telecare/Support_materials/Telecare Supplement March 2009.pdf
<u>Leicester City PCT</u>	http://www.slideshare.net/3GDR/engineering-better-health
<u>Leicestershire County and Rutland PCT</u>	http://www.dhcarenetworks.org.uk/library/Resources/Telecare/Telecare_Outcomes/Performance2008/Telecare - mainstreaming and outcomes - 29 December 2008 Telehealth.doc
<u>Lewisham PCT</u>	
<u>Lincolnshire Teaching PCT</u>	http://www.wsactionnetwork.org.uk/news/wsdan_progress/the_telecare_and.html
<u>Lincolnshire Teaching PCT</u>	http://www.dhcarenetworks.org.uk/library/Resources/Telecare/Telecare_Outcomes/Performance2008/Telecare - mainstreaming and outcomes - 29 December 2008 Telehealth.doc
<u>Liverpool PCT</u>	http://vip.doc.ic.ac.uk/saphe/public/SAPHE_28_May_09_Flyer.pdf
<u>Luton PCT</u>	
<u>Manchester PCT</u>	
<u>Medway PCT</u>	http://www.medwaypct.nhs.uk/Our_services/Telehealth_service/index.html
<u>Medway PCT</u>	http://www.medwaypct.nhs.uk/NetsiteCMS/pageid/140/rec/more/offset/60/releaseid/64/Press/Press.html
<u>Medway PCT</u>	http://www.tunstall.co.uk/assets/literature/Telehealthcare%20Medway%20PCT.pdf
<u>Medway PCT</u>	http://www.publictechnology.net/modules.php?op=modload&name=News&file=article&sid=4667
<u>Medway PCT</u>	http://jtt.rsmjournals.com/cgi/content/abstract/13/suppl_3/86

Medway PCT	http://www.ehealth.ed.ac.uk/presentations/jun2008/Matt%20Marshall%20(Tunstall)%20Implementing%20Telecare.ppt
Medway PCT	http://www.dhcarenetworks.org.uk/library/Resources/Telecare/Support_materials/Telecare_Supplement_March_2009.pdf
Medway PCT	http://www.tunstall.co.uk/assets/Literature/Telehealthcare%20Medway%20PCT.pdf
Mid Essex PCT	http://www.essexcc.gov.uk/vip8/ecc/ECCWebsite/content/binaries/documents/Telehealth_in_Mid_Essex.ppt
Middlesbrough PCT	http://www.dhcarenetworks.org.uk/library/Resources/Telecare/Telecare_Outcomes/Performance2008/Telecare_-_mainstreaming_and_outcomes_-_29_December_2008_Telehealth.doc
Milton Keynes PCT	http://www.rcplondon.ac.uk/clinical-standards/ceeu/Current-work/ncrop/Documents/Report-of-the-National-COPD-Audit-2008-UK-Primary-Care-Organisations-Resources-and-Organisation-of-Care.pdf
Milton Keynes PCT	http://www.ukprwire.com/Detailed/Technology/Milton_Keynes_Launches_Advanced_Telehealth_Service_to_Improve_Care_for_People_with_COPD_7466.shtml
Milton Keynes PCT	http://www.publictechnology.net/modules.php?op=modload&name=News&file=article&sid=13880
Milton Keynes PCT	http://www.ehprimarycare.com/news/2811/tunstall_deploy_telehealth_for_copd_at_milton_keynes
Milton Keynes PCT	http://www.tunstall.co.uk/assets/literature/Telecare%20Times%20Issue%2026.pdf
Milton Keynes PCT	http://www.publictechnology.net/modules.php?op=modload&name=News&file=article&sid=13880&mode=thread&order=0&thold=0
Milton Keynes PCT	http://www.publictechnology.net/print.php?sid=9808
Milton Keynes PCT	http://www.ehealthurope.net/news/4419/newham_and_milton_keynes_win_european_awards
Milton Keynes PCT	http://www.ehealth.ed.ac.uk/presentations/jun2008/Matt%20Marshall%20(Tunstall)%20Implementing%20Telecare.ppt
Milton Keynes PCT	http://www.dhcarenetworks.org.uk/library/Resources/Telecare/Support_materials/Telecare_Supplement_March_2009.pdf
Milton Keynes PCT	http://www.tunstall.co.uk/assets/Literature/658%20Milton%20Keynes%20telehealthcare.pdf
Milton Keynes PCT	http://www.dhcarenetworks.org.uk/library/Resources/Telecare/Telecare_Outcomes/Performance2008/Telecare_-_mainstreaming_and_outcomes_-_29_December_2008_Telehealth.doc
Newcastle PCT	
Newham PCT	http://www.jitscotland.org.uk/downloads/1219664895-99-Telecare%20Factsheet%20-%20Telehealth.pdf
Newham PCT	http://www.hsj.co.uk/telehealth-takes-off/93656.article

Newham PCT	http://www.slideshare.net/3GDR/engineering-better-health
Newham PCT	http://www.publications.parliament.uk/pa/cm200708/cmhansrd/cm080507/text/80507w0029.htm
Newham PCT	http://www.institute.nhs.uk/index.php?option=com_mtree&task=viewlink&link_id=3328&Itemid=165
Newham PCT	http://www.e-health-insider.com/comment_and_analysis/278/2008:the_year_telecare_grows_up_tcg
Newham PCT	http://www.epractice.eu/en/workshops/learningjourney
Newham PCT	http://www.newham.gov.uk/News/2007/May/MillionstoHelpNewhamsVulnerable.htm
Newham PCT	http://www.newhampct.nhs.uk/services/telecare/
Newham PCT	http://www.epractice.eu/files/documents/workshops/13771-1216631947.pdf
Newham PCT	http://www.fastuk.org/research/projview.php?id=1436
Newham PCT	http://newhamwsdtrial.org/telehealth.php
Newham PCT	http://www.ukauthority.com/Portals/0/lgitu/SepOct/LGITU_SepOct_08_Telehealth.pdf
Newham PCT	http://www.telecare.org.uk/files/47417/FileName/newham.ppt
Newham PCT	http://www.newhampct.nhs.uk/docs/pressreleases/millions_to_help_newhams_vulnerable.pdf
Newham PCT	http://www.prlog.org/10157114-newham-and-milton-keynes-receive-prestigious-european-awards-for-pioneering-use-of-telehealthcare.html
Newham PCT	http://pavilionjournals.metapress.com/content/95v18447170526g5/
Newham PCT	http://www.dhcarenetworks.org.uk/library/Resources/Telecare/Telecare_Outcomes/Performance2008/Telecare_-_mainstreaming_and_outcomes_-_29_December_2008_Telehealth.doc
Newham PCT	http://hubola.kingsfund.org.uk/document.rm?id=8255
Newham PCT	http://hubola.kingsfund.org.uk/document.rm?id=8265
Norfolk PCT	http://www.wsdactionnetwork.org.uk/news/wsdan_progress/the_telecare_and.html
Norfolk PCT	http://www.norfolk.nhs.uk/news/2008/apr/awards2.html
Norfolk PCT	http://www.institute.nhs.uk/index.php?option=com_mtree&task=viewlink&link_id=3260&Itemid=1876
Norfolk PCT	http://www.norfolk.nhs.uk/news/2008/dec/projectsuccess.html
Norfolk PCT	http://www.eoe.nhs.uk/page.php?page_id=109
Norfolk PCT	http://www.slideshare.net/3GDR/engineering-better-health
Norfolk PCT	http://www.dhcarenetworks.org.uk/library/Resources/Telecare/Telecare_Outcomes/Performance2008/Telecare_-_mainstreaming_and_outcomes_-_29_December_2008_Telehealth.doc
North East Essex PCT	http://www.slideshare.net/3GDR/engineering-better-health

<u>North East Essex PCT</u>	http://www.northeastessexpct.nhs.uk/default.aspx.locid-0cjnew06i.Lang-EN.htm
<u>North East Essex PCT</u>	http://www.dhcarenetworks.org.uk/library/Resources/Telecare/Telecare_Outcomes/Performance2008/Telecare - mainstreaming and outcomes - 29 December 2008 Telehealth.doc
<u>North East Essex PCT</u>	http://www.ehiprimarycare.com/News/4746/north_east_essex_runs_pilot_with_tunstall
<u>North East Lincolnshire</u>	http://www.youtube.com/watch?v=5bSwFkX8Ggs
<u>North Lancashire Teaching PCT</u>	
<u>North Lincolnshire PCT</u>	http://www.youtube.com/watch?v=5bSwFkX8Ggs
<u>North Somerset PCT</u>	
<u>North Staffordshire PCT</u>	
<u>North Tyneside PCT</u>	
<u>North Yorkshire and York PCT</u>	https://www3.northyorks.gov.uk/n2cabinet_cc/reports_/20070718_/9gstatementofth/9gstatementofth.pdf
<u>Northamptonshire Teaching PCT</u>	http://www.ehealth.ed.ac.uk/presentations/jun2008/Matt%20Marshall%20(Tunstall)%20Implementing%20Telecare.ppt
<u>Northamptonshire Teaching PCT</u>	http://www.dhcarenetworks.org.uk/library/Resources/Telecare/Telecare_Outcomes/Performance2008/Telecare - mainstreaming and outcomes - 29 December 2008 Telehealth.doc
<u>Northumberland Care Trust</u>	http://www.tunstall.co.uk/assets/literature/Telecare%20Times%20issue%2028.pdf
<u>Northumberland Care Trust</u>	http://www.ehealth.ed.ac.uk/presentations/jun2008/Matt%20Marshall%20(Tunstall)%20Implementing%20Telecare.ppt
<u>Nottingham City PCT</u>	http://www.eman.org.uk/db/documents/EM%20DoHealth%20new%20schemes%20pdf.pdf
<u>Nottingham City PCT</u>	http://www.ehiprimarycare.com/news/4654/telehealthcare_project_details_published
<u>Nottingham City PCT</u>	http://www.wsdactionnetwork.org.uk/news/wsdan_progress/the_telecare_and.html
<u>Nottingham City PCT</u>	http://www.ehiprimarycare.com/news/swindon_takes_telehealth_to_mainstream
<u>Nottingham City PCT</u>	http://www.24dash.com/news/Local_Government/2008-03-13-Nottingham-City-PCT-Launches-Mainstream-Telehealth-Deployment

<u>Nottingham City PCT</u>	http://www.computerweekly.com/Articles/2008/03/14/229857/nottingham-primary-care-trust-rolls-out-telecare-system-to-reduce-hospital.htm
<u>Nottingham City PCT</u>	http://www.publictechnology.net/modules.php?op=modload&name=News&file=article&sid=14741&mode=thread&order=0&thold=0
<u>Nottingham City PCT</u>	http://www.ehiprimarycare.com/News/2758/nottingham_telehealth_pilot_underway
<u>Nottingham City PCT</u>	http://www.nottinghamcity-pct.nhs.uk/EasySite/lib/serveDocument.asp?doc=14585&pgid=8679
<u>Nottingham City PCT</u>	http://www.hmgglobal.com/knowledge-bank/articles/telehealth-a-keystone-for-future-healthcare-delivery
<u>Nottingham City PCT</u>	http://www.connectednottingham.org.uk/News/News/Nottingham-NHS-PCT-launches-large-scale-telehealth-operation
<u>Nottingham City PCT</u>	http://www.ehealth.ed.ac.uk/presentations/jun2008/Matt%20Marshall%20(Tunstall)%20mplementing%20Telecare.ppt
<u>Nottingham City PCT</u>	http://www.tunstall.co.uk/assets/literature/Managing%20Long-Term%20Conditions%20-%20Nottingham%20PCT.pdf
<u>Nottingham City PCT</u>	http://www.localgovernmentexecutive.co.uk/news/news/nottingham-city-pct-launches-telehealth-deployment-1053.html
<u>Nottingham City PCT</u>	http://www.computerweekly.com/Articles/2008/03/14/229857/nottingham-primary-care-trust-rolls-out-telecare-system-to-reduce-hospital.htm
<u>Nottingham City PCT</u>	http://www.bjhcim.co.uk/news/2008/n803034.htm
<u>Nottingham City PCT</u>	http://clinicaltrials.gov/ct2/show/NCT00789100
<u>Nottingham City PCT</u>	http://tie.telemed.org/news/archive.asp?ID=1638
<u>Nottingham City PCT</u>	http://www.prlog.org/10068469-nhs-trusts-across-the-country-win-innovative-technology-award-for-telehealth-solutions.html
<u>Nottingham City PCT</u>	http://news.bbc.co.uk/1/hi/england/nottinghamshire/7285032.stm
<u>Nottingham City PCT</u>	http://www.nottinghamcity-pct.nhs.uk/EasySite/lib/serveDocument.asp?doc=23467&pgid=13795
<u>Nottingham City PCT</u>	http://www.microsoft.com/uk/nhs/content/articles/drop-the-pilots-is-telemedicine-going-mainstream-at-last.aspx
<u>Nottingham City PCT</u>	http://www.dhcarenetworks.org.uk/library/Resources/Telecare/Support_materials/Telecare_Supplement_March_2009.pdf
<u>Nottingham City PCT</u>	
<u>Nottinghamshire County Teaching PCT</u>	
<u>Oldham PCT</u>	

<u>Oxfordshire PCT</u>	http://www.oxfordradcliffe.nhs.uk/forclinicians/gpbulletin/gpbulletindocs/090326diabetesresearch.pdf
<u>Oxfordshire PCT</u>	http://www.slideshare.net/3GDR/engineering-better-health
<u>Peterborough PCT</u>	http://www.rcplondon.ac.uk/clinical-standards/ceeu/Current-work/ncrop/Documents/Report-of-the-National-COPD-Audit-2008-UK-Primary-Care-Organisations-Resources-and-Organisation-of-Care.pdf
<u>Plymouth Teaching PCT</u>	http://www.dhcarenetworks.org.uk/library/Resources/Telecare/Telecare_Outcomes/Performance2008/Telecare_-_mainstreaming_and_outcomes_-_29_December_2008_Telehealth.doc
<u>Portsmouth City Teaching PCT</u>	
<u>Redbridge PCT</u>	http://www.supply2health.nhs.uk/5NA/Lists/Advertisements/DispForm.aspx?ID=1
<u>Redbridge PCT</u>	http://www.redbridge.nhs.uk/newsandpublications/news.asp?id=210
<u>Redcar and Cleveland PCT</u>	http://www.dhcarenetworks.org.uk/library/Resources/Telecare/Telecare_Outcomes/Performance2008/Telecare_-_mainstreaming_and_outcomes_-_29_December_2008_Telehealth.doc
<u>Richmond and Twickenham PCT</u>	
<u>Rotherham PCT</u>	http://www.ehealth.ed.ac.uk/presentations/jun2008/Matt%20Marshall%20(Tunstall)%20Implementing%20Telecare.ppt
<u>Rotherham PCT</u>	http://www.rotherhampct.nhs.uk/corporate/BoardPapers/200704/N1%20-%20Assistive%20Technology%20Strategic%20Capital%20Grant%20Cover%20Doc.doc
<u>Rotherham PCT</u>	http://www.dhcarenetworks.org.uk/library/Resources/Telecare/Telecare_Outcomes/Performance2008/Telecare_-_mainstreaming_and_outcomes_-_29_December_2008_Telehealth.doc
<u>Salford PCT</u>	http://www.salford-pct.nhs.uk/documents/COPDStrategy08-13.pdf
<u>Salford PCT</u>	http://www.dhcarenetworks.org.uk/library/Resources/Telecare/Telecare_Outcomes/Performance2008/Telecare_-_mainstreaming_and_outcomes_-_29_December_2008_Telehealth.doc
<u>Sandwell PCT</u>	http://www.dhcarenetworks.org.uk/library/Resources/Telecare/Telecare_Outcomes/Performance2008/Telecare_-_mainstreaming_and_outcomes_-_29_December_2008_Telehealth.doc
<u>Sefton PCT</u>	
<u>Sheffield PCT</u>	http://www.tunstall.co.uk/assets/literature/Telecare%20Times%20issue%2028.pdf
<u>Sheffield PCT</u>	http://fadelibrary.wordpress.com/2008/06/25/sheffield-pct-reduces-hospital-admissions-and-supports-self-care-with-telehealth/
<u>Sheffield PCT</u>	http://www.ehealth.ed.ac.uk/presentations/jun2008/Matt%20Marshall%20(Tunstall)%20Implementing%20Telecare.ppt
<u>Sheffield PCT</u>	http://www.publictechnology.net/modules.php?op=modload&name=News&file=article&sid=12693

Sheffield PCT	http://www.prlog.org/10037714-telehealth-specialist-tunstall-teams-up-with-sheffield-pct-to-celebrate-world-copd-awareness-day.html
Sheffield PCT	http://www.openpr.com/pdf/41853/Sheffield-PCT-Telehealth-Project-Wins-Prestigious-NHS-Award.pdf
Sheffield PCT	http://www.sheffield.nhs.uk/news/award040408.php
Sheffield PCT	http://www.ict-ageing.eu/?page_id=427
Sheffield PCT	http://www.ehealthnews.eu/content/view/1129/26/
Sheffield PCT	http://www.thiis.co.uk/telecare-research-cc.aspx
Sheffield PCT	http://www.dhcarenetworks.org.uk/library/Resources/Telecare/Support_materials/Telecare_Supplement_March_2009.pdf
Sheffield PCT	http://www.tunstall.co.uk/assets/Literature/Chronic%20Disease%20Management%20-%20Sheffield%20PCT.pdf
Sheffield PCT	http://www.dhcarenetworks.org.uk/library/Resources/Telecare/Telecare_Outcomes/Performance2008/Telecare_-_mainstreaming_and_outcomes_-_29_December_2008_Telehealth.doc
Sheffield PCT	http://www.tunstall.co.uk/assets/literature/SheffieldCOPD.wmv
Shropshire County PCT	
Solihull Care Trust	http://www.dhcarenetworks.org.uk/library/Resources/Telecare/Telecare_Outcomes/Performance2008/Telecare_-_mainstreaming_and_outcomes_-_29_December_2008_Telehealth.doc
Somerset PCT	
South Birmingham PCT	
South East Essex PCT	http://www.echo-news.co.uk/news/4030441.Patients_able_to_get_test_results_from_home/
South East Essex PCT	http://www.dhcarenetworks.org.uk/library/Resources/Telecare/Telecare_Outcomes/Performance2008/Telecare_-_mainstreaming_and_outcomes_-_29_December_2008_Telehealth.doc
South Gloucestershire PCT	http://www.ehealth.ed.ac.uk/presentations/jun2008/Matt%20Marshall%20(Tunstall)%20Implementing%20Telecare.ppt
South Gloucestershire PCT	http://www.dhcarenetworks.org.uk/library/Resources/Telecare/Telecare_Outcomes/Performance2008/Telecare_-_mainstreaming_and_outcomes_-_29_December_2008_Telehealth.doc
South Staffordshire PCT	
South Tyneside PCT	http://www.dhcarenetworks.org.uk/library/Resources/Telecare/Telecare_Outcomes/Performance2008/Telecare_-_mainstreaming_and_outcomes_-_29_December_2008_Telehealth.doc
South West Essex PCT	http://www.ehealth.ed.ac.uk/presentations/jun2008/Matt%20Marshall%20(Tunstall)%20Implementing%20Telecare.ppt

<u>Southampton City PCT</u>	http://www.chmi.port.ac.uk/sihi/sihi2006/proceed/AdrianFlowerday.ppt
<u>Southampton City PCT</u>	http://www.ehprimarycare.com/news/4654/telehealthcare_project_details_published
<u>Southampton City PCT</u>	http://www.wsdactionnetwork.org.uk/news/wsdan_progress/the_telecare_and.html
<u>Southampton City PCT</u>	http://www.ontargetmag.com/article.aspx?issueID=117&articleID=846
<u>Southampton City PCT</u>	http://www.slideshare.net/3GDR/engineering-better-health
<u>Southampton City PCT</u>	http://www.laboratorymedicine.nhs.uk/labmedicine/Portals/0/PathITConference/MainProgramme/Pathology%20Summit_AndrewFlowerday.ppt
<u>Southampton City PCT</u>	http://www.broomwellhealthwatch.com/index.php?idy=161
<u>Southampton City PCT</u>	http://www.southamptonhealth.nhs.uk/news/archivednews/?EntryId4=10108
<u>Southampton City PCT</u>	http://www.telemedicine-europe.net/fileadmin/TELEMEDICINE/Documents/final_conference/Presentation_20Project_20Southampton_20TeleMedicine_20Project_20November_202007.pdf
<u>Southampton City PCT</u>	http://www.dhcarenetworks.org.uk/library/Resources/Telecare/Support_materials/Telecare_Supplement_March_2009.pdf
<u>Southampton City PCT</u>	http://www.dhcarenetworks.org.uk/library/Resources/Telecare/Telecare_Outcomes/Performance2008/Telecare_-_mainstreaming_and_outcomes_-_29_December_2008_Telehealth.doc
<u>Southwark PCT</u>	
<u>Stockport PCT</u>	http://www.dhcarenetworks.org.uk/library/Resources/Telecare/Telecare_Outcomes/Performance2008/Telecare_-_mainstreaming_and_outcomes_-_29_December_2008_Telehealth.doc
<u>Stockton-on-Tees Teaching PCT</u>	http://www.dhcarenetworks.org.uk/library/Resources/Telecare/Telecare_Outcomes/Performance2008/Telecare_-_mainstreaming_and_outcomes_-_29_December_2008_Telehealth.doc
<u>Stoke On Trent PCT</u>	
<u>Suffolk PCT</u>	http://www.dhcarenetworks.org.uk/library/Resources/Telecare/Telecare_Outcomes/Performance2008/Telecare_-_mainstreaming_and_outcomes_-_29_December_2008_Telehealth.doc
<u>Sunderland Teaching PCT</u>	http://www.dhcarenetworks.org.uk/library/Resources/Telecare/Telecare_Outcomes/Performance2008/Telecare_-_mainstreaming_and_outcomes_-_29_December_2008_Telehealth.doc
<u>Surrey PCT</u>	http://www.chmi.port.ac.uk/sihi/sihi2006/proceed/AdrianFlowerday.ppt
<u>Surrey PCT</u>	http://www.ehealth.ed.ac.uk/presentations/jun2008/Matt%20Marshall%20(Tunstall)%20Implementing%20Telecare.ppt

Surrey PCT	http://www.dhcarenetworks.org.uk/library/Resources/Telecare/Telecare_Outcomes/Performance2008/Telecare - mainstreaming and outcomes - 29 December 2008 Telehealth.doc
Sutton and Merton PCT	
Swindon PCT	http://www.rcplondon.ac.uk/clinical-standards/ceeu/Current-work/ncrop/Documents/Report-of-the-National-COPD-Audit-2008-UK-Primary-Care-Organisations-Resources-and-Organisation-of-Care.pdf
Swindon PCT	http://www.ehiprimarycare.com/news/swindon_takes_telehealth_to_mainstream
Swindon PCT	http://www.nursinginpractice.com/default.asp?article.id=15379&page=article.display&title=TelehealthatSwindonPCT%3Aimprovingoutcomes
Swindon PCT	http://www.ehiprimarycare.com/comment_and_analysis/381/reducing_admissions_with_telehealth
Swindon PCT	http://www.ehealth.ed.ac.uk/presentations/jun2008/Matt%20Marshall%20(Tunstall)%20Implementing%20Telecare.ppt
Swindon PCT	http://www.swirl.nhs.uk/resource/203/
Swindon PCT	http://www.swindonpct.nhs.uk/the_board/board06/board_may06/Paper45_AssistiveTechnology.pdf
Swindon PCT	http://www.thiis.co.uk/news-snippets-swindon-copd.aspx
Swindon PCT	http://www.publictechnology.net/modules.php?op=modload&name=News&file=article&sid=17164&mode=thread&order=0&thold=0
Swindon PCT	http://www.publicnet.co.uk/features/2009/02/06/telehealth-keeps-patients-out-of-hospital/
Swindon PCT	http://www.openpr.com/news/52287/Swindon-PCT-Launches-Mainstream-Telehealth-Monitoring-Service-for-COPD-Patients.html
Swindon PCT	http://www.telecare.org.uk/files/47409/FileName/jantretheway.ppt
Swindon PCT	http://healthcareitnews.eu/content/view/1179/41/
Swindon PCT	http://www.hospitaliteurope.com/default.asp?title=TelehealthmonitoringforCOPDpatients&page=article.display&article.id=13291
Swindon PCT	http://www.ukprwire.com/Detailed/Health_Wellbeing/Swindon_PCT_Launches_Mainstream_Telehealth_Monitoring_Service_for_COPD_Patients_22477.shtml
Swindon PCT	http://www.burnscarlton.com/uploaddocuments/SwindonCaseStudy.pdf
Swindon PCT	http://www.prlog.org/10111255-swindon-pct-launches-mainstream-telehealth-monitoring-service-for-copd-patients.html
Swindon PCT	http://www.bjhcm.co.uk/news/2008/n809001.htm
Swindon PCT	http://healthcareitnews.eu/index2.php?option=com_content&do_pdf=1&id=1179
Swindon PCT	http://www.voluntarypages.net/print.php?sid=17164
Swindon PCT	http://www.publictechnology.net/modules.php?op=modload&name=News&file=article&sid=17151

Swindon PCT	http://www.microsoft.com/uk/nhs/content/articles/drop-the-pilots-is-telemedicine-going-mainstream-at-last.aspx
Swindon PCT	http://www.dhcarenetworks.org.uk/library/Resources/Telecare/Support_materials/Telecare_Supplement_March_2009.pdf
Swindon PCT	http://www.tunstall.co.uk/assets/Literature/Swindon%20case%20study.pdf
Swindon PCT	http://www.dhcarenetworks.org.uk/library/Resources/Telecare/Telecare_Outcomes/Performance2008/Telecare_-_mainstreaming_and_outcomes_-_29_December_2008_Telehealth.doc
Swindon PCT	http://www.tunstall.co.uk/assets/literature/MrsG2_VCD_PAL.wmv
Tameside and Glossop PCT	http://www.manchestereveningnews.co.uk/news/s/1111995_spy_lifeline_for_pensioners
Telford and Wrekin PCT	http://www.dhcarenetworks.org.uk/library/Resources/Telecare/Telecare_Outcomes/Performance2008/Telecare_-_mainstreaming_and_outcomes_-_29_December_2008_Telehealth.doc
Torbay Care Trust	http://www.dhcarenetworks.org.uk/library/Resources/Telecare/Telecare_Outcomes/Performance2008/Telecare_-_mainstreaming_and_outcomes_-_29_December_2008_Telehealth.doc
Tower Hamlets PCT	
Trafford PCT	http://www.dhcarenetworks.org.uk/library/Resources/Telecare/Telecare_Outcomes/Performance2008/Telecare_-_mainstreaming_and_outcomes_-_29_December_2008_Telehealth.doc
Wakefield District PCT	http://www.dhcarenetworks.org.uk/library/Resources/Telecare/Telecare_Outcomes/Performance2008/Telecare_-_mainstreaming_and_outcomes_-_29_December_2008_Telehealth.doc
Walsall Teaching PCT	http://www.slideshare.net/3GDR/engineering-better-health
Walsall Teaching PCT	http://www.tunstall.co.uk/assets/literature/Telecare%20Times%20issue%2028.pdf
Walsall Teaching PCT	http://www.ehiprimarycare.com/news/walsall_and_hull_begin_mass_telehealth_deploy ment
Walsall Teaching PCT	http://www.prlog.org/10040888-walsall-and-hull-launch-mainstream-deployments-of-telehealth-for-copd-and-congestive-heart-failure.html
Walsall Teaching PCT	http://www.medicalnewstoday.com/articles/91001.php
Walsall Teaching PCT	http://www.ontargetmag.com/article.aspx?issueID=108&articleID=751
Walsall Teaching PCT	http://www.hoise.com/vmw/08/articles/vmw/LV-VM-01-08-15.html
Walsall Teaching PCT	http://www.reuters.com/article/pressRelease/idUS113647+06-Dec-2007+BW20071206
Walsall Teaching PCT	http://www.walsall.nhs.uk/Library/Corporate/Boardpapers/2008/January/Enc%201-Minutes%20Dec%2020%2007-Public%20Board.doc

Walsall Teaching PCT	http://www.ehiprimarycare.com/news/swindon_takes_telehealth_to_mainstream
Walsall Teaching PCT	http://www.tplusmedical.co.uk/news/diabetes.html
Walsall Teaching PCT	http://www.dhcarenetworks.org.uk/library/Resources/Telecare/Telecare_Outcomes/Performance2008/Telecare_-_mainstreaming_and_outcomes_-_29_December_2008_Telehealth.doc
Waltham Forest PCT	http://www.supply2health.nhs.uk/5NA/Lists/Advertisements/DispForm.aspx?ID=1
Waltham Forest PCT	http://www1.walthamforest.gov.uk/ModernGov/Published/C00000287/M00001811/AI00009675/\$10AppendixA2008ICTStrategyFinal.docA.ps.pdf
Waltham Forest PCT	http://www.dhcarenetworks.org.uk/library/Resources/Telecare/Telecare_Outcomes/Performance2008/Telecare_-_mainstreaming_and_outcomes_-_29_December_2008_Telehealth.doc
Wandsworth PCT	http://www.ehealth.ed.ac.uk/presentations/jun2008/Matt%20Marshall%20(Tunstall)%20Implementing%20Telecare.ppt
Wandsworth PCT	http://www.dhcarenetworks.org.uk/library/Resources/Telecare/Telecare_Outcomes/Performance2008/Telecare_-_mainstreaming_and_outcomes_-_29_December_2008_Telehealth.doc
Warrington PCT	http://www.dhcarenetworks.org.uk/library/Resources/Telecare/Telecare_Outcomes/Performance2008/Telecare_-_mainstreaming_and_outcomes_-_29_December_2008_Telehealth.doc
Warwickshire PCT	https://www.warwickshire.gov.uk/Web/corporate/pages.nsf/Links/3CCE674E809B90DD8025743A002CA506/\$file/prime+time+4+final+proof.pdf
Warwickshire PCT	http://www.ehealth.ed.ac.uk/presentations/jun2008/Matt%20Marshall%20(Tunstall)%20Implementing%20Telecare.ppt
Warwickshire PCT	http://www.warwickshire.nhs.uk/trustboardenclosures/july08/Enc%2013%20IMT%20Plan%2008-09.pdf
Warwickshire PCT	https://www.warwickshire.gov.uk/Web/corporate/pages.nsf/Links/3CCE674E809B90DD8025743A002CA506/\$file/prime+time+4+final+proof.pdf
Warwickshire PCT	http://www.dhcarenetworks.org.uk/library/Resources/Telecare/Telecare_Outcomes/Performance2008/Telecare_-_mainstreaming_and_outcomes_-_29_December_2008_Telehealth.doc
West Essex PCT	http://www.westessexpct.nhs.uk/ournews/news2009item.php?id=135
West Hertfordshire PCT	
West Kent PCT	http://www.connectingforhealth.nhs.uk/factsandfiction/patientcases/telehealth
West Kent PCT	http://www.hsj.co.uk/telehealth-takes-off/93656.article

West Kent PCT	http://www.e-health-insider.com/comment_and_analysis/278/2008: the year telecare grows up tcg
West Kent PCT	http://www.kent.gov.uk/SocialCare/health-and-wellbeing/telehealth/kent-telehealth-pilot.htm
West Kent PCT	http://www.kent.gov.uk/SocialCare/health-and-wellbeing/telehealth/
West Kent PCT	http://www.viterion.com/web_docs/TelehealthInKent.pdf
West Kent PCT	http://chain.ulcc.ac.uk/chain/event/telehealth/presentation_Rye.ppt
West Kent PCT	http://www.kenttv.com/programmes.php?CID=27&SCID=63&PID=111&Title=The+Kent+Telehealth+Project
West Kent PCT	http://www.networks.nhs.uk/uploaddb/kentcountycounciltelehealthandtelecare.doc
West Kent PCT	http://www.medetel.lu/download/2007/parallel_sessions/presentation/0419/Delivering_Telehealth_in_Kent.pdf
West Kent PCT	http://news.bbc.co.uk/1/hi/england/kent/4322041.stm
West Kent PCT	http://www.kent.ac.uk/news/stories/telehealthtopstheagendaatuniversityofkentconference/2008
West Kent PCT	http://www.idea.gov.uk/idk/core/page.do?pageId=7328980
West Kent PCT	http://www.telecare.org.uk/files/47413/FileName/kentdemonstrator.ppt
West Kent PCT	http://www.egovmonitor.com/node/264
West Kent PCT	http://www.lgcplus.com/news/innovation-action/911605.article
West Kent PCT	http://www.dh.gov.uk/en/Publicationsandstatistics/Publications/PublicationsPolicyAndGuidance/Browsable/DH_5753946
West Kent PCT	http://www.worldhealthcareblog.org/2007/09/07/tele-medicine-tele-monitoring-and-tele-health/
West Kent PCT	http://www.westkentpct.nhs.uk/NetsiteCMS/pageid/7/offset/0/newsarticleid/17/News/News.html
West Kent PCT	http://212.58.226.17:8080/1/low/england/kent/4322041.stm
West Kent PCT	http://www.publications.parliament.uk/pa/cm200708/cmhansrd/cm080507/text/80507w0029.htm
West Kent PCT	http://www.thiis.co.uk/news-snippets-telecare-kent.aspx
West Kent PCT	http://www.improvementnetwork.gov.uk/imp/core/page.do?pageId=1068557
West Kent PCT	http://www.dhcarenetworks.org.uk/library/Resources/Telecare/Telecare_Outcomes/Performance2008/Telecare_-_mainstreaming_and_outcomes_-_29_December_2008_Telehealth.doc
West Kent PCT	http://hubola.kingsfund.org.uk/document.rm?id=8255
West Kent PCT	http://hubola.kingsfund.org.uk/document.rm?id=8265
West Sussex PCT	http://www.westsussex.gov.uk/ccm/cms-service/stream/asset/?asset_id=3338715

West Sussex PCT	http://www.dhcarenetworks.org.uk/library/Resources/Telecare/Telecare_Outcomes/Performance2008/Telecare - mainstreaming and outcomes - 29 December 2008 Telehealth.doc
Western Cheshire PCT	http://www.rcplondon.ac.uk/clinical-standards/ceeu/Current-work/ncrop/Documents/Report-of-the-National-COPD-Audit-2008-UK-Primary-Care-Organisations-Resources-and-Organisation-of-Care.pdf
Western Cheshire PCT	http://www.tunstall.co.uk/assets/literature/Chronic%20Disease%20Management%20-%20ChesterCare.pdf
Western Cheshire PCT	http://www.chestercare.org/telehealth.html
Western Cheshire PCT	http://www.dhcarenetworks.org.uk/library/Resources/Telecare/Telecare_Outcomes/Performance2008/Telecare - mainstreaming and outcomes - 29 December 2008 Telehealth.doc
Western Cheshire PCT	http://www.ehealth.ed.ac.uk/presentations/jun2008/Matt%20Marshall%20(Tunstall)%20Implementing%20Telecare.ppt
Western Cheshire PCT	http://www.dhcarenetworks.org.uk/library/Resources/Telecare/Support_materials/Telecare_Supplement_March_2009.pdf
Westminster PCT	
Wiltshire PCT	
Wirral PCT	http://www.ehealth.ed.ac.uk/presentations/jun2008/Matt%20Marshall%20(Tunstall)%20Implementing%20Telecare.ppt
Wirral PCT	http://www.wirral.gov.uk/Minute/public/cabssv070920rep6a_24977.pdf
Wirral PCT	http://www.wirral.gov.uk/minute/public/cabssv060425rep1a_20148.pdf
Wirral PCT	http://www.dhcarenetworks.org.uk/library/Resources/Telecare/Telecare_Outcomes/Performance2008/Telecare - mainstreaming and outcomes - 29 December 2008 Telehealth.doc
Wolverhampton City PCT	http://www.rcplondon.ac.uk/clinical-standards/ceeu/Current-work/ncrop/Documents/Report-of-the-National-COPD-Audit-2008-UK-Primary-Care-Organisations-Resources-and-Organisation-of-Care.pdf
Wolverhampton City PCT	http://www.wolverhamptonhealth.nhs.uk/Library/Documents/Corporate/BoardPapersFeb2009/Agenda%20Item%206%20Report%20of%20Pec.pdf
Wolverhampton City PCT	http://www.ehealth.ed.ac.uk/presentations/jun2008/Matt%20Marshall%20(Tunstall)%20Implementing%20Telecare.ppt
Wolverhampton City PCT	http://www.microsoft.com/uk/nhs/content/articles/drop-the-pilots-is-telemedicine-going-mainstream-at-last.aspx
Wolverhampton City PCT	http://www.dhcarenetworks.org.uk/library/Resources/Telecare/Telecare_Outcomes/Performance2008/Telecare - mainstreaming and outcomes - 29 December 2008 Telehealth.doc
Wolverhampton City PCT	http://www.wolvespct.nhs.uk/Library/Documents/Corporate/Wolverhampton%20City%20%20PCT%20%20Long%20Term%20Conditions%20Commissioning%20Strategy%20Executive%20Summary.pdf

Worcestershire PCT	http://www.rcplondon.ac.uk/clinical-standards/ceeu/Current-work/ncrop/Documents/Report-of-the-National-COPD-Audit-2008-UK-Primary-Care-Organisations-Resources-and-Organisation-of-Care.pdf
Worcestershire PCT	http://www.dhcarenetworks.org.uk/library/Resources/Telecare/Telecare_Outcomes/Performance2008/Telecare_-_mainstreaming_and_outcomes_-_29_December_2008_Telehealth.doc

Note: DH Care Networks is not responsible for the content of external links and does not endorse any suppliers or their products. Any claims made by organisations should be carefully evaluated as part of normal commissioning and procurement arrangements.