

Telecare LIN eNewsletter

December 2008

Welcome to the December 2008 newsletter. The Telecare Learning and Improvement Network (LIN) is responsible for providing general implementation support to organisations building their telecare and telehealth programmes.

[Booking is now available for the WSDAN event in Birmingham on 12 March 2008.](#)

If you are an organisation implementing telecare or telehealth in England and have an interesting local telecare or telehealth story for inclusion in a future newsletter then e-mail Mike Clark at telecare@csip.org.uk

Web site links:

www.networks.csip.org.uk/telecarefactsheets
www.networks.csip.org.uk/telecarenewsletters
www.networks.csip.org.uk/telecareservices
www.networks.csip.org.uk/telecareoutcomes

WSD Action Network:

<http://www.wsdactionnetwork.org.uk/>

Notes: The Telecare LIN is not responsible for the content of external links and does not endorse any suppliers or their products. Any claims made by organisations should be carefully evaluated as part of normal commissioning and procurement arrangements.

Contents

Item	Page No
1 Performance information on telecare – themed reports	4
2 WSDAN update – Birmingham event now booking for March 2009	9
3 Care Quality Commission Consultation	11
4 Updated telecare profiles available	14
5 Telecare supplement for March 2009	14
6 News and network updates	15
7 Events	41
Appendix 1 – Supplier supplement for March 2009	43

Item 1 links to themed reports prepared from the CSCI 2008 responses
Item 2 provides information about the upcoming WSDAN events

Item 3 provides information for telecare organisations on the Care quality Commission Consultation

Item 4 provides a link to 150 updated telecare profiles

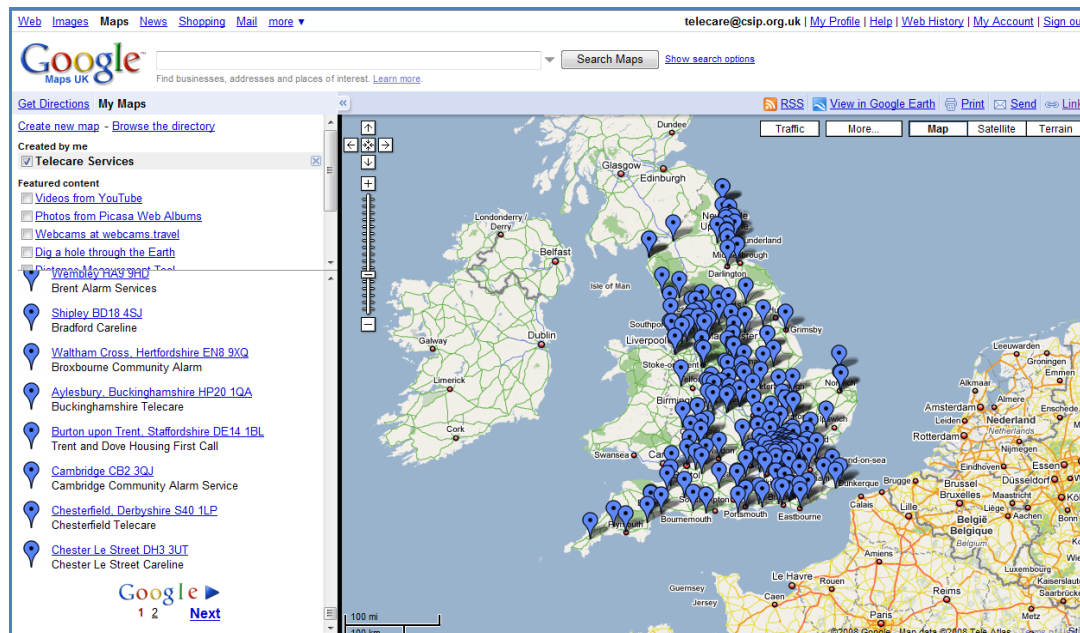
Item 5 and Appendix 1 provide information for contributors about the March 2009 supplement

Item 6 provides a listing to news updates and links from around the world

Item 7 provides a listing of Network events

All previous telecare eNewsletters are available at: www.networks.csip.org.uk/telecarenewsletters

Telecare Services Map



For web site links to telecare services in England go to:

<http://maps.google.co.uk/maps/ms?hl=en&ie=UTF8&msa=0&msid=100406857045032193451.0004540c223f16f2d1c9d&z=6>

Note: 200 service links are on Page 1 and a further 114 on Page 2 (Click 'Next' at the bottom of the list to see sites on the second page)

Glossary:

ALIP – Assisted Living Innovation Platform

AT – Assistive Technology

BERR – Business Enterprise and Regulatory Reform

CSCI – Commission for Social Care Inspection

CQC – Care Quality Commission

DCLG – Department for Communities and Local Government

FACS – Fair Access to Care Services

IB- Individualised budgets

i4i – Invention for Innovation

NHS CfH – NHS Connecting for Health

NHS PASA – NHS Purchasing and Supply Agency

POPP – Partnership for Older Peoples Projects

PT Grant or PTG – Preventative Technology Grant

TSA – Telecare Services Association

TSB – Technology Strategy Board

WSDAN – Whole System Demonstrator (Long Term Conditions) Action Network

Themed reports based on the 2008 CSCI performance information are now being added to the web site.

These include reports on:

- Dementia
- Telehealth and Telemedicine
- Falls
- Intermediate Care, Hospital Discharge and Re-ablement
- Extra Care
- Evaluation, benefits, business case

The reports are prepared by carrying out keyword analysis on the outcomes and mainstreaming responses from 150 social care authorities initially collected during April/May 2008. Reference is made to the main aims of [Building Telecare in England](#) (Department of Health, 2005). Themed reports can be used to shape future local policies such as the commissioning and provision of dementia services, falls prevention strategies, intermediate care and re-ablement programmes or the use of telecare within extra care facilities.

CSIP Networks

Help | Access Keys | Site Map | Your Details | Make Text Larger

Care Services Improvement Partnership **CSIP** Networks

Telecare LIN

Search for in Search

Homepage > Independent Living Choices > Telecare LIN > Telecare Outcomes

▼ Telecare LIN

- > About Telecare
- > Advice on Telecare
- > Telecare Outcomes
- > Telecare Services
- > Events
- > Resources
- > News
- > Contact Telecare LIN

Telecare Outcomes

Added on 28/01/2008
Updated on 28/12/2008

Telecare performance reports from social care authorities (2008)

Updated to 28 December 2008

In April/May 2008, CSCI collected performance data from 150 councils with adult social services responsibilities (CASSRs).

Further information about the performance data is available in the [November 2008](#) newsletter. The following reports are available:

1 Spreadsheets with additional user counts and expenditure: [National](#) and [Regional](#) Breakdowns.

2 Reports on responses to questions about outcomes and mainstreaming of telecare in England: [Main Report](#), [Main report with highlighted keywords](#), Regional breakdowns covering [East](#), [East Midlands](#), [London](#), [North East](#), [North West](#), [South East](#), [South West](#), [West Midlands](#), [Yorkshire and Humberside](#), [Keyword Analysis against 150 responses](#) (see [November 2008](#) newsletter for more information).

3 [Extracts from 150 CSCI Reports \(2008\)](#) making reference to telecare.

4 Themed summaries including case studies eg [Dementia](#), [Telehealth and telemedicine](#); [falls](#); [intermediate care, hospital discharge and re-ablement](#); [extra care](#). These themed reports include extracts from the 150 social care returns from 2008. They can be used to identify approaches that have worked successfully in other areas. The examples used provide some self-reported case study evidence against the main aims of [Building Telecare in England](#).

For the full range of reports, go to www.networks.csip.org.uk/telecareoutcomes

Examples of dementia case studies reported in 2008 include:

Bath and North East Somerset have used a telecare assessment system as part of their dementia care programme. Outcomes have included improved assessment of behaviour leading to medication reviews, more effective prescribing, increased family/carer re-assurance, strategic use of services to support the individual and an overall reduction in placements. Their telecare pilot concluded that the most significant

benefits and the most positive outcomes could be evidenced for people with early to moderate dementia, who were supported to remain at home indefinitely, or for longer than anticipated periods, before being admitted to residential or nursing care.

In **Bexley**, The Telecare Dementia Project provided more detailed outcomes based on advanced equipment in situ in peoples homes. Carers have responded positively stating that anxieties have reduced and they are now able to undertake tasks such as shopping. In a case example, Mr A, an older man with dementia lives with his wife and daughter. Identified risks included leaving the property alone and becoming lost, flooding the bathroom, and unsafe use of the gas cooker. Various sensor and detector equipment were provided which alert his wife so she can immediately deal with the problem before it reaches a crisis. Mrs A is very pleased with the telecare system as it gives her the reassurance that effective systems are in place. Also she no longer needs to follow her husband around and says she is now able to do more in the garden which gives her pleasure and relaxation.

In **Bracknell Forest**, a 90 year old man with type 2 diabetes and high blood pressure with short term memory loss has been given a medicine dispenser which saves his son ringing several times a day to remind his father to take his medication. In another example, a 78 year old with Alzheimer's Disease, lives with her daughter and son in law who both work full time. She has good physical health and is quite active. She has a history of wandering during the day and leaving taps on. A flood detector in the bathroom, a property exit sensor and a passive infrared detector for inactivity were installed. Both family members are relieved to know that they will be informed in a timely manner for prompt action should their mother leave the house or leave taps on. They are both able to continue in employment.

In **Bradford**, carers report that they are reassured about management and reduction of risk and given more personal freedom and support. Assessment equipment (lifestyle monitoring) and a voice prompt system reduced risks to a service user with dementia to live on her own and prevented admission to a care home.

In **Richmond**, a pilot project assessing effectiveness of telecare for older people with Alzheimer's Disease & carers installed telecare devices (50 sensors) for ten people. This included smoke, natural gas & carbon monoxide detectors, property exit (for wandering) detectors & temperature extreme sensors. Flood, bed, sensor pillow alert & sounder/visual beacon sensors were also installed. Feedback from carers indicates decreased anxiety & stress. Users were supported to continue living at home through this risk management approach. The incidence of wandering, home safety (gas/smoke/carbon monoxide), flooding & falls has reduced.

In **Salford**, examples include: (1) An elderly man with dementia and a history of wandering, which often involved the police, remained in extra care housing for a further 12 months following the installation of door contacts. Without this provision he would have required residential care (2) A couple, Mrs A with dementia & a history of falls and Mr A is hard of hearing and was not getting any sleep listening out for his wife. The provision of a telecare bed sensor has provided a solution to the problem & enabled him to get a good nights sleep.

In **Solihull**, one client with Alzheimer's Disease had begun to leave gas appliances on unlit and as a heavy smoker, she also left lit cigarettes in ashtrays. Smoke detectors and a gas detector/shut off valve were installed to manage the risk and as a result the lady was able to continue to live safely in her own home. Carers were also reassured about her safety. Another service user with Alzheimer's lived alone and frequently left her home in the middle of the night. Sensors were installed which ensured assistance was summoned if she left the house and this meant the risk was reduced and her son felt reassured his mother could continue to live in her home rather than need admission to residential care.

In **Trafford**, Ms X has advanced dementia and due to issues of personal safety (wandering at night, leaving cooker on, bogus caller incident) her son was considering residential care as he could no longer sustain the caring relationship because of the impact on his job. The installation of a bed sensor, wanderer alarm, bogus caller warning and smoke detectors mean that Ms X has been supported to safely remain in her own home, promoting her choice and independence, while her son has been able to remain in employment and has reported a huge reduction in the stress he was experiencing.

In **West Berkshire**, an older person with dementia, receiving 24 hour care and supervision in own home, was restricted to living upstairs as mobility decreased. A bed occupancy sensor was used to alert the spouse and also to support live-in care to be arranged allowing the spouse to have a respite break.

In **Wokingham**, family stress and anxiety has been reduced with a wireless alert to the carer which signals when the service user who has dementia leaves her room at night (used to attempt to cook at night in the kitchen which was a gas safety hazard). The carer reported: "I worry a lot less since the equipment was installed". In another case, a husband is now able to sleep at night because he knows he will be alerted by a floor contact mat if his wife, who has dementia, gets out of bed.

Examples of **telehealth** case studies reported in 2008 include:

In **Bath and North East Somerset**, an evaluation report of the Telecare & Telehealth pilot was produced in December 2007. The pilot assessed five projects including a Heart failure service. Telemedicine has been used within an Extra Care setting and with Heart failure patients known to specialist nurses, outcomes were limited in this case however clients were enthusiastic about its use and felt re-assured about their vital signs. There was some reduction in the number of home visits by Heart failure specialist nurses. Specific recommendations from the Telecare & Telehealth evaluation report have been incorporated into the Joint Older People's Commissioning Plan, key actions for mainstreaming the pilot include mainstreaming and integrating telecare and telehealth equipment within the general assessment process for health and social care and to increase the number of people using it. The integration of telecare and telehealth equipment within community services to support people with long term conditions and mental health needs, focusing on long term prevention and health education rather than acute hospital admission.

Blackburn Council has developed strong relationships with the PCT who have contributed £20k for telehealth for use alongside social care telecare funding to develop formal links to increase both the quality and quantity of service provision. Users potentially requiring telecare/telehealth packages are considered at the weekly joint panel (telehealth funding can help unlock for support for people not eligible via social care). Training including community nurses to be jointly delivered.

In **Cheshire**, 15 patients have received a telemedicine service in 2 PCT areas. Community matrons and GPs are already commenting on its value in targeting support to people with long term conditions. Telemedicine pilot will continue in West Cheshire funded by Innovations Forum.

In **Durham**, in addition to older persons' provision, a Telehealth pilot was conducted for 12 patients with long term conditions. Evaluation has demonstrated a 16% reduction in GP consultations, a 26% reduction in District Nurse visits and a 38% reduction in hospital bed days during the pilot period. The majority of patients found the system offered reassurance and improved their quality of life.

East Riding plan to complete & evaluate a telehealth pilot with the PCT focusing on COPD and Diabetes. 12 pieces of monitoring equipment are in use, this includes 1 machine in a sheltered housing scheme, giving all residents access. This enables the patient to take their own vital sign measurements in their own

home & healthcare professionals remotely observe the measurements. This allows early identification of deterioration resulting in a planned co-ordinated & proactive approach to LTC management.

East Sussex will run a Telehealth project in partnership with the PCTs and Wealden & Eastbourne Lifeline which will be jointly funded. It will enable them to evaluate the potential for multi-agency partnership and whole system working in the provision of care closer to home. The aim is to run this scheme as a preliminary to mainstreaming telehealth in the community on a long-term basis; this would place East Sussex in a leading position in the implementation of telecare and telehealth in the UK.

The **Kent** Telehealth Development Pilot, the largest in the UK with 250 participants, ended for evaluation purposes on 31 December 2007. Participants completed evaluation tools, namely QUL on entry and exit to the pilot and SF12 was completed every 8 weeks during the Pilot period. Responses are still being processed along with the evaluation, prior and post trial, of interaction with services. Formal publication of the outcomes of the Pilot are anticipated later this year. Early indications are that participants felt more empowered, more confident and independent and as a result of that experienced less anxiety and thus interacted less with services but when they did access services it was more appropriately. As a result of that we've seen the number of bed days for the group decrease, emergency admissions decrease and where individuals have died, it's been at home rather than hospital which is better for the individual, better for their carers and better for services.

Whilst the evaluation of the Kent Telehealth Development Pilot has closed and the outcomes will be published, it has been hugely successful. The 250 participants or their successors still benefit from the technology as Telehealth delivery and monitoring continues in partnership with East Kent and West Kent PCTs. The technology is embedded in service delivery and will mainstream into the PCTs by April 2009. Also included in the pilot were other agencies such as Volunteer Groups and Age concern who support people who may not have a carer and need help with taking their measurements. More recently a group of service users from the Kent Pilot who've benefited from using the technology, have volunteered to support new and existing users by undertaking trouble shooting and answering general queries. They have recently undergone training on the technology and are fully supported by KASS. We're working closely with the PCTs to link the group in to other networks such as disease specific patient groups. We will continue to work in partnership, to improve our joint delivery of services to bring care closer to home in a seamless and positive way for service users. WSD will facilitate the installation of 1333 new users of Telehealth delivered and maintained through partnership working.

In **Kingston upon Hull**, a joint LA and PCT telecare and telehealth strategy has been drafted. This will support ambitions to develop a range of telecare and telehealth services based on 3 work programmes:

- self care/self serve – information and signposting services
- watchful waiting/assisted care telecare – remote monitoring
- vital signs monitoring/self directed care – telehealth

Funding will be budgeted year on year to deliver on these ambitions

In **Lincolnshire**, improved health and speedy discharge from hospital/intermediate care has been assisted through vital signs monitoring and the home from hospital scheme using Telecare.

In **Milton Keynes**, Telehealth services are also developing in partnership with the PCT and we have 18 monitors for people with long term conditions.

Newham Assistive Technology (NeAT) has been mainstreamed into service provision and is managed by a dedicated manager within the physical disabilities integrated service. Future projected benefits from the Whole Systems Demonstrator project have been factored into the Strategic Commissioning Plan by the PCT. Demand forecasting work that has been done and that is included within the JSNA has also projected forward a growth in telecare and telehealth installations that will increase numbers of people able to live in their own homes and therefore reduce institutional admissions. The NeAT project will continue to roll out telecare packages to both residents living in their own homes and those in sheltered accommodation with a target of 250 – 400 new users under mainstream services and 832 under the Long term conditions Whole System Demonstrator in 08/09.

Norfolk was the Telehealth Project regional winner of the Innovative Health and Social Care Technology Award. UEA currently evaluating the project - expected to show a reduction in acute admissions.

In **Northumberland**, telehealth services have been provided as an integrated part of the same pilot, and are judged to have been sufficiently successful to justify a bid for mainstream NHS funding for the future. In conjunction with telecare services, the Care Trust has developed telehealth initiatives, which pending successful application through the Annual Operational Plan process, it will implement in the community. There is also a telehealth model being designed to support

In **Sheffield**, from the multi agency assistive technology strategy group, we supported a telehealth project with the PCT which won the regional innovative information and communications category in the health & social care awards. The remote monitoring of COPD patients led to people spending less time in hospital. The use of stand alone assistive technology also contributed towards enabling people with a learning disability to move from a hostel into supported accommodation.

Contact Mike Clark at telecare@csip.org.uk for further assistance with analysis and benchmarking of telecare information from around England.

The first WSDAN open event scheduled for London on 22 January 2009 has now reached maximum attendance and booking has opened for the Birmingham event on 12 March 2008.

Events will continue at 2-3 month intervals around the country into 2010 and will continue to highlight the developing evidence base for telecare and telehealth.

After Birmingham, the likely next event is scheduled for June 2009 and the likely venue is Leeds. Following that, we are looking at Bristol for September 2009.

The programmes for the WSDAN events will follow the themes identified by the Whole System Demonstrators and the Action Network of 12 sites.

The draft programme for London on 22 January 2009 is:

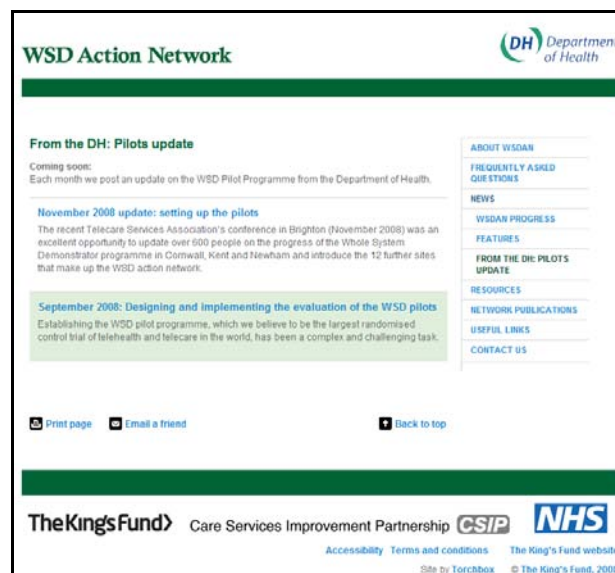
Times	Areas to be covered
10.00am until 11.15am Integrated health and social care using telecare and telehealth	Important progress points in 2008 <ul style="list-style-type: none"> • World Class Commissioning and Transforming Social Care/integrated care pilots/personal budgets • Other relevant policy – Carers Strategy, Dementia Strategy, Extra Care, Lifetime Homes, Digital Inclusion • Short background and progress across the WSD demonstrators • Stakeholder buy in, leadership, workforce and other big issues • The work of the Whole System Demonstrator Action network (WSDAN) in dissemination of learning and building the evidence base for telecare and telehealth in England • Evaluation approaches • How does the WSD methodology differ from mainstream implementation? • Lessons for local implementation from two years of progress
11.15am until 11.45am	Break
11.45am until 12.45am	Scaling telecare and telehealth programmes <ul style="list-style-type: none"> • Workshop 1 - Health records, interoperability, whole system approaches • Workshop 2 – procuring equipment and services, future of the telecare national framework (2010 onwards) – NHS PASA consultation • Workshop 3 – Partnership and consortium working, implementation and design - the Assisted Living Innovation Platform
12.45am until 1.30pm	Lunch
1.30pm until 2.30pm	Scaling telecare and telehealth programmes <ul style="list-style-type: none"> • Workshop 1 - Health records, interoperability, whole system approaches • Workshop 2 – procuring equipment and services, future of the telecare national framework (2010 onwards) – NHS PASA consultation • Workshop 3 – Partnership and consortium working, implementation and design - the Assisted Living Innovation

	Platform
2.30pm until 3.45pm	<p>Overcoming implementation barriers</p> <ul style="list-style-type: none"> • Moving to 'four figure telehealth' ("From 30 to 3000 users") • Barriers with examples of how they can be overcome • PARR++ and predictive modelling • Identifying who is most likely to benefit from telecare and telehealth • Virtual Wards and other innovative approaches • Tracking and evaluating progress in real time • Evaluation approaches – tools, surveys etc • Impact of commissioning/service provision arrangements in PCTs
3.45pm until 4.00pm	<p>Closing remarks</p> <ul style="list-style-type: none"> • Summary • Mapping out progress points and milestones for 2009
4.00pm	Close

As we progress through 2009 into 2010, we will continue to cover major themes around the business case for telecare and telehealth, regional monitoring, use of interoperable devices as they become available, standards, workforce issues as well as providing practical local examples of services that work.

The WSDAN web site (Department of Health and the King's Fund) will continue to publish the latest research and reports from the WSD Action Network. Contact the WSDAN mailbox for more information, to submit evidence of your own local evaluations or to suggest themes for the events.

You can register for WSDAN news updates at http://www.wsdactionnetwork.org.uk/about_wsdan/register_for_updates.html
 Mailbox: wsdnetwork@kingsfund.org.uk



The Care Quality Commission (CQC) has set out its approach to reviewing the performance and activities of health and social care organisations in 2009/10 and is embarking on a consultation with stakeholders. The approach is underpinned by the CQC's aim of ensuring better care for people and its focus on high quality health and social care.

The CQC is the first regulator to launch an integrated consultation on the regulation of both health and adult social care, on both commissioning and providers and on the proposals for special reviews and studies. This demonstrates the inclusive approach that will be characteristic of the Care Quality Commission.

2009/10 is a year of transition between how health and social care services are assessed now and how this will be done in the future and the CQC is proposing a progressive approach to this change during 2009/10. From April 2010 new registration requirements for all health and social care providers will come into force and the CQC believes that providers need to concentrate on preparing for this. However, the CQC expects that providers will continue to meet the existing standards on safety and quality of care whilst preparing for the new registration requirements and check that they are doing so.

The CQC is consulting for 12 weeks (18 December 2008 to 12 March 2009) on the proposals, which have three main elements:

- Reviews of health and social care commissioning (by primary care trusts and local authority adult social services departments)
- Reviews of providers of health and social care services (such as hospitals, and mental health services)
- Special reviews and studies of aspects of health and social care, separately and together.

The consultation paper also sets out what the CQC means by quality in assessing health and social care services and how this definition will influence all of its work.

Reviews of commissioning

The CQC will assess how well primary care trusts (PCTs) and council adult social care departments are commissioning services. It will do this through periodic reviews of their performance.

PCTs and councils will continue to be assessed separately in 2009/10, but the CQC will also introduce a framework for assessing services that spans health and social care commissioning and which reflects its definition of quality care.

The CQC will publish a scorecard for PCTs and will continue to grade the assessment of delivery of outcomes for adult social care as has been done in 2008/09. Results will be published on the CQC website, including information about how well councils and PCTs are working together to meet the needs of the community.

CQC will issue a report on how well PCTs and councils have worked together on commissioning. This will be used as part of the evidence contributed to the Comprehensive Area Assessment.

Reviews of providers

For NHS providers, the CQC review in 2009/10 will replace the Annual Health Check. It is a transition year during which NHS providers will need for the first time to be registered under the Health and Social Care Act 2008 by the time the requirements come into force on 1 April 2010. Until then, Standards for Better Health will continue to apply. (Standards for Better Health are the standards health organisations are currently expected to meet).

Independent health care and adult social care providers will continue to be registered under the Care Standards Act 2000 and compliance with registration will be reviewed in a similar way to previously.

For adult social care services, CQC's reports will show how well services have done and what they need to do to improve, with a quality rating from zero stars (poor) to three stars (excellent). As before, the quality rating will influence how often we review a service.

Special reviews and studies

The CQC's special reviews and studies can cover virtually any aspect of health and social care. Its aim will be to look at the outcomes for the people using services and ensure that the reviews and studies are informed by the experience of people who use health and social care services, their carers and families.

The CQC has chosen topics that it believes are of public concern; where services and practice need improving; or issues that have national policy implications. Importantly, some of the topics cover joint health and social care issues so we can examine how services work together. This demonstrates the important role that CQC brings to reviewing health and social care in an integrated way. The consultation asks for views on the issues to be addressed by reviews and for ideas for future reviews.

Reviews and studies will support the CQC's work to improve the quality and value for money of health and social care and make the best use of its evidence about the performance of health and social care services.

There are different types of reviews and studies. Some might involve scored assessments across all organisations or inspections of individual bodies, while others might be national studies that lead to general rather than specific recommendations for services, practice and policies.

The CQC will publish a single annual state of health and social care report and an annual report on the operation of the Mental Health Act (which may be a separate report, or included in the state of health and social care report).

The subjects being considered for special reviews in 2009/10 are:

Meeting the healthcare needs of people (adults of all ages) in care homes.

- Meeting the physical health needs of people with mental health problems and learning disabilities in hospital and residential settings.
- How well is the health and social care pathway working for a) people who have stroke and their carers; b) people with dementia?
- The impact of commissioning and health promotion on health inequalities.

- How well are health and social care services addressing equality and human rights – focussing on commissioning in two or three service areas?
- How well are councils responding to people’s first contact with them? (to assess progress since the review of eligibility criteria)
- What measures and good practice are in place to ensure the safety of surgery and anaesthetics?
- A review of health and social care for families with disabled children and young people.
- Child and adolescent mental health services.
- A review or study focussed on value for money that covers both quality and cost of care in the areas of a) diagnostic services in acute hospitals; b) commissioning c) services for older people.

Link: <http://www.cqc.org.uk/>

Telecare profiles for 2008 are now available – one for each of the 150 social care authorities.

These have been developed from the CSCI telecare performance and summary reports.

They are available at www.networks.csip.org.uk/telecareprofiles

CSIP Networks Help | Access Keys | Site Map | Your Details | Make Text Larger

Care Services Improvement Partnership **CSIP**
Networks

Telecare LIN

Search for in

Homepage > Independent Living Choices > Telecare LIN > Advice on Telecare > Telecare Profiles and Service Infor...

▼ Advice on Telecare

- > Policy
- > Telecare Implementation Guide
- > Newsletters
- > Factsheets
- > Telecare Profiles and Service Information
- > Case Studies
- > Other Guidance relevant to Telecare
- > Telecare Advisory Network
- > Useful Links

Telecare Profiles and Service Information

Added on 19/04/2007
Updated on 01/01/2009

Telecare profiles (includes 2008 performance information)

- > [Barking and Dagenham](#), [Barnet](#), [Barnsley](#), [Bath and North East Somerset](#), [Bedfordshire](#), [Bexley](#), [Birmingham](#), [Blackburn](#), [Blackpool](#), [Bolton](#), [Bournemouth](#), [Bracknell Forest](#), [Bradford](#), [Brent](#), [Brighton and Hove](#), [Bristol](#), [Bromley](#), [Buckinghamshire](#), [Bury](#)
- > [Calderdale](#), [Cambridgeshire](#), [Camden](#), [Cheshire](#), [City of London](#), [Cornwall](#), [Coventry](#), [Croydon](#), [Cumbria](#)
- > [Darlington](#), [Derby](#), [Derbyshire](#), [Devon](#), [Doncaster](#), [Dorset](#), [Dudley](#), [Durham](#)
- > [Ealing](#), [East Riding](#), [East Sussex](#), [Enfield](#), [Essex](#), [Gateshead](#), [Gloucestershire](#), [Greenwich](#)
- > [Hackney](#), [Halton](#), [Hammersmith and Fulham](#), [Hampshire](#), [Haringey](#), [Harrow](#), [Hartlepool](#), [Havering](#), [Herefordshire](#), [Hertfordshire](#), [Hillingdon](#), [Hounslow](#)
- > [Isle of Wight](#), [Isles of Scilly](#), [Islington](#), [Kensington and Chelsea](#), [Kent](#), [Kingston Upon Hull](#), [Kingston Upon Thames](#), [Kirklees](#), [Knowsley](#)
- > [Lambeth](#), [Lancashire](#), [Leeds](#), [Leicester](#), [Leicestershire](#), [Lewisham](#), [Lincolnshire](#), [Liverpool](#), [Luton](#)
- > [Manchester](#), [Medway](#), [Merton](#), [Middlesbrough](#), [Milton Keynes](#), [Newcastle Upon Tyne](#), [Newham](#), [Norfolk](#), [North East Lincs](#), [North Lincs](#)
- > [North Somerset](#), [North Tyneside](#), [North Yorkshire](#), [Northamptonshire](#), [Northumberland](#), [Nottingham](#), [Nottinghamshire](#)
- > [Oldham](#), [Oxfordshire](#), [Peterborough](#), [Plymouth](#), [Poole](#), [Portsmouth](#), [Reading](#), [Redbridge](#), [Redcar and Cleveland](#), [Richmond](#), [Rochdale](#), [Rotherham](#), [Rutland](#)
- > [Salford](#), [Sandwell](#), [Sefton](#), [Sheffield](#), [Shropshire](#), [Slough](#), [Solihull](#), [Somerset](#), [South Gloucestershire](#), [South Tyneside](#), [Southampton](#), [Southend on Sea](#), [Southwark](#), [St Helens](#), [Staffordshire](#), [Stockport](#), [Stockton on Tees](#), [Stoke on Trent](#), [Suffolk](#), [Sunderland](#), [Surrey](#), [Sutton](#), [Swindon](#)
- > [Tameside](#), [Telford and the Wrekin](#), [Thurrock](#), [Torbay](#), [Tower Hamlets](#), [Trafford](#)
- > [Wakefield](#), [Walsall](#), [Waltham Forest](#), [Wandsworth](#), [Warrington](#), [Warwickshire](#), [West Berkshire](#), [West Sussex](#), [Westminster](#), [Wigan](#), [Wiltshire](#), [Windsor and Maidenhead](#), [Wirral](#), [Wokingham](#), [Wolverhampton](#), [Worcestershire](#), [York](#)


If you would like to contribute to the next telecare supplement, then details are available for the March edition in the newsletter appendix.

The supplement is an opportunity for a wide range of organisations to share information on case studies, new products and services, innovations etc.

E-news from the Housing Learning & Improvement Network - DECEMBER 2008 page 1

HOUSING WITH CARE MATTERS

Housing Learning and Improvement Network



Jeremy Porteus
National Programme Lead

Page Contents:
1 Policy and Funding News
2 New Housing LIN Publications
3 Other Useful Publications
4 Calls for Information
5 Research Update
6 Regional Round-Up
7 Regional LIN Meetings
8 National Events

Issue with live URLS and website links

Season's Greetings from all at the Housing LIN

POLICY AND FUNDING NEWS: Supporting People Update

Following the Chancellor's Pre Budget Report statement, Communities and Local Government (CLG) announced the provisional local government financial settlement, including details of Supporting People funding.

The Supporting People funding ring fence will come down for next year 2009/10. But CLG has not rolled the funding completely into Area Based Grants for 2009/10 as expected, and has announced separate Supporting People grants to local authorities for one more year. At the same time a 'transition package' was announced, intended to support the delivery of Supporting People in a non-ring fenced environment because CLG is keen to ensure that the expertise developed and gains made in the programme since its inception in 2003 are not lost and that the risks and concerns identified by stakeholders during the Pathfinder project are managed. This will include published guidance and research, a new financial modelling tool to evidence the value of SP services, conferences, seminars, a focus on small providers and other work yet to be defined.


The amounts per local authority are the same as those provisionally set a year ago - with the exception of those areas where changes in local government structure mean a different authority will be responsible.

The CLG press release is at:
<http://www.communities.gov.uk/news/corporate/1075788>

The breakdown of grant to each Local Authority Administering Authority is at:
<http://www.local.communities.gov.uk/finance/0210/speogram/supporting%20people.xls>

New capital for Campus Closure Programme

Information about Stage 3 of the learning disability Campus Closure programme is now available on the [DLH website](#). There is a much simplified bid form compared with previous stages, providing only 3 levels of bidding to reflect complexity of projects. (cont'd. on next page)

We help to improve services and achieve better outcomes for children and families, adults and other people including those with mental health problems, physical or learning disabilities or people in the criminal justice system. We work with and are funded by  DH Department of Health

Housing LIN tel: 020 7972 1330; www.networks.csip.org.uk/housing email: housing@csip.org.uk

E-news from the Housing Learning & Improvement Network - DECEMBER 2008 page 2

The December 'Housing with Care Matters' newsletter is now available at:

http://networks.csip.org.uk/library/Resources/Housing/Support_materials/Newsletter/Newsletter33.pdf

Audit Commission briefing - *Clarifying joint financing arrangements (December 2008)*

<http://networks.csip.org.uk/icn/News/NewsArticle/?cid=4891>

<http://www.audit-commission.gov.uk/reports/NATIONAL-REPORT.asp?CategoryID=ENGLISH^574&ProdID=A7A89F5F-9D04-4f92-B3B5-196731FA63A6>

37 applications through to next stage of integrated care pilot selection process

<http://networks.csip.org.uk/icn/Resources/Type/ICNResource/?cid=4888>

The TV set that keeps an eye on Alzheimer's sufferers- STREAM (Hull)

<http://www.dailymail.co.uk/health/article-1102785/The-TV-set-keeps-eye-Alzheimers-sufferers.html>

Monitoring mental health by text

<http://news.bbc.co.uk/1/hi/health/7797155.stm>

Telecare plan spells independence – Wrexham

<http://www.dailypost.co.uk/news/north-wales-news/2008/12/03/telecare-plan-spells-independence-55578-22391812/>

EU internet access reaches 60 per cent

http://www.ehealthurope.net/news/4381/eu_internet_access_reaches_60_per_cent



“The Prevention Package for Older People will initially improve falls and fracture services, foot care, intermediate care, telecare and audiology services, with the aim of enabling older people to live longer, healthier and more independent lives. The package will evolve with new enhancements added over time”.

NHS Operating Framework 2009-2010

http://www.dh.gov.uk/en/News/Recentstories/DH_091665

Telecare expected to play key role in improving care services

<http://www.publictechnology.net/modules.php?op=modload&name=News&file=article&sid=18131>

Telecare and dependability

<http://thetelecareblog.blogspot.com/2008/11/telecare-and-dependability.html>

Hungary signs e-health deal with GE Healthcare

http://www.ehealthurope.net/news/4365/hungary_signs_e-health_deal_with_ge_healthcare

Public urged to feedback on NHS services

<http://www.onmedica.com/NewsArticle.aspx?id=30b71ab3-a7ae-4166-ac1e-da0ea6e82e55>

Health IT weighed for economic stimulus package

<http://www.govhealthit.com/online/news/350700-1.html>

Health ministers agree to share patient e-records

<http://www.theaustralian.news.com.au/story/0,25197,24758462-23289,00.html>

Dr Gray's plans to be e-health centre – Scotland

http://www.ehiprimarycare.com/news/4383/dr_gray's_plans_to_be_e-health_centre

EHTEL publishes e-health patient charter

http://www.ehealthurope.net/news/4310/ehotel_publishes_e-health_patient_charter

Alberta Govt Plan for healthcare delivery reference to assisted living and supportive housing, telehealth

http://www.prairiepost.com/index.php?option=com_content&task=view&id=3237&Itemid=26<http://www.health.alberta.ca/resources/publications/Vision-2020-Phase-1-2008.pdf><http://www.gov.ab.ca/home/NewsFrame.cfm?ReleaseID=/acn/200812/24855F345C4C5-E36D-0A41-FE189CBA5195F6D4.html>

UNITED STATES: E-Therapy: History and Survey

http://www.ibls.com/internet_law_news_portal_view.aspx?s=sa&id=1483

Telehealth Solutions-Time to Come Out of the Closet

<http://my.barackobama.com/page/community/post/johnzauher/gGxvml>

[TeleHomecare Conference Coming](#)

http://telemedicineneeds.blogspot.com/2008/11/telehomecare-conference-coming_30.html

Telehealth and EMRs - How can Physicians Use these Tools?

<http://blog.canadianemr.ca/canadianemr/2008/11/telehealth-and-emrs-how-can-physicians-use-these-tools.html>

Telemedicine for Urban Uninsured: A Pilot Framework for Specialty Care Planning for Sustainability

<http://www.liebertonline.com/doi/abs/10.1089/tmj.2008.0008>

Telemedicine M.D. Consultations Generate High Satisfaction and Usage Among Working-Age Adults

<http://www.marketwatch.com/news/story/Telemedicine-MD-Consultations-Generate-High/story.aspx?guid=%7B3BDFD6D3-D11F-4670-ADA7-CB05FF2A05EA%7D>

Text service provides more than a Band-Aid for rural health service

<http://www.cnn.com/2008/TECH/12/03/db.malawicellphones/>

Cordis - An EU funded project to achieve optimum health

<http://cordis.europa.eu/wire/index.cfm?fuseaction=article.Detail&rcn=18360>

Telemedicine Improves Outcomes

<http://telemedicineneeds.blogspot.com/2008/11/telemedicine-improves-outcomes.html>


Sweet Charity, Connected Health

<http://www.nextgenweb.org/news-and-blog-clips/sweet-charity-connected-health>

TELEMEDICINE SAVES TIME AND MONEY: REPORT – University of Rochester, Children

<http://www.wptv.com/content/health/mb/story/Telemedicine-saves-time-and-money/DM07BwL11kOXQdrJ3Opa7g.csp>

Text only : Skip navigation : About this site



Home | A to Z | Business | **Community** | Council | Employment | Events | News | Q & A | Roads & travel | Visitors

@ Contact | Forms | Payments | eShop | Online services | Advanced search | Search the site | Search

Community


See also

- Carephones**
What is a Carephone and how does it work?
- Disability equipment**
A wide variety of equipment is available for you to borrow or to buy. From grabrails costing a couple of pounds to pavement scooters and fitted stairlifts which can cost thousands.

Other websites

- New deal for carers**
Do you have an idea that could change carers lives
- Caring about Carers**
Information & advice for those who provide care & support.
- Action for carers and employment (ACE)**
ACE National raises awareness of barriers facing carers who wish to work, and tests and promotes ways of supporting them.
- more links**

Contacts and Maps



Maps and Travel | Contact

Home: Community full menu: Living independently
Help to live independently at home
Gateway to care - December 2008
gatewaytocare@kirklees.gov.uk

- Need help to live independently at home - then why not keep your options open?
- Our services include
- Carephone Home Safety Service
- Direct payments
- Carers Support Service
- Shared lives
- Community Equipment Service
- Home Care Services

Need help to live independently at home - then why not keep your options open?

Looking for suitable support at home so you can live independently can be a difficult time.

Many people feel anxious at the thought of asking for help or organising their own social care support, but they can be pleasantly surprised when they look at what is on offer and how easy it can be.

Here at Kirklees Council Adult Services, we manage a range of services called Community Options.

Please don't worry if you are not entitled to help from the Council. Our trained staff can put you in touch with other professional organisations who may be able to help.

Community Options are all about helping you live the life you choose and supporting you to remain independent in your home and community for as long as possible.

We help many people, including: people with a learning or physical disability, carers, older people, people with mental health concerns, people with an alcohol or drug related problem, people affected by HIV or Aids and people affected by domestic violence.

When you contact us we will let you know what help and support is available from us and we will arrange for someone to call and see you to talk through your needs and to see whether you are able to get a service from us.

Our services are delivered by a dedicated team of staff who are trained, empathetic and caring.


Our services include:

Carephone Home Safety Service:

Our Carephone Home Safety Service uses 'Telecare' technology to help people live at home. This includes the familiar community alarm services that provide an emergency telephone response from your home to our centre and sensors that monitor and support daily living, such as fall detectors. We also have more sophisticated equipment like movement sensors. If the sensor does not pick up movement in your home, for example, you are unable to get out of bed or had a fall, the detector alerts the control centre.

Direct payments:

If you have had a community care assessment or a carers assessment and a package of social care has been agreed





<http://www.kirklees.gov.uk/community/health-care/independent/indepentliving.shtml>

Tata Plans to Commercialize Healthcare Portal

http://www.pcworld.com/article/154464/tata_plans_to_commercialize_healthcare_portal.html

'VirtualRounds' Boost North West Patient Care – Tasmania

<http://www.media.tas.gov.au/release.php?id=25372>

Telemedicine aids stroke care

<http://pingbuzii.blogspot.com/2008/11/telemedicine-aids-stroke-care.html>

The Future of Healthcare

<http://www.nanotech-now.com/columns/?article=257>

Life-saving medical technology business is recognised with Award – Visensia hospital system

http://www.pharmiweb.com/pressreleases/pressrel.asp?ROW_ID=5207

Intel Health Guide

<http://thefutureofthings.com/pod/5852/intel-health-guide.html>

€250,000 for robot doctors – Dublin

<http://www.irishmedicalnews.ie/index.php/component/content/article/1-news/562-250000-for-robot-doctors>

Antibiotics cut COPD risk

<http://www.healthcarerepublic.com/news/PracticeStaff/LatestNews/865166/Antibiotics-cut-COPD-risk/>

COPD sending more people to hospital - New research shows awareness remains low, prevalence high – Canada

<http://www.newswire.ca/en/releases/archive/November2008/17/c8898.html>

Better search: a cure for cyberchondria?

<http://www.ehiprimarycare.com/news/4379/better-search-a-cure-for-cyberchondria-tcq>

Wal Mart eHealth Programme

<http://www.euronews24.org/Technology/technology-wal-mart-launches-e-health-program/>

Buckinghamshire Joint Commissioning Strategy for Physical & Sensory Disability – telecare reference

<http://www.bmgsystems.co.uk/bucksccp/UploadedFiles/PSD%20Summary.pdf>

ODH report: Nonfatal falls cost Ohioans \$6.2 billion annually

<http://www.wnewsj.com/main.asp?SectionID=45&SubSectionID=142&ArticleID=171541&TM=22077.41>

Gateshead Telecare Strategy – Cabinet Report

<http://online.gateshead.gov.uk/docushare/dsweb/Get/Document-22811/Item+04+-+Telecare+Strategy+report.doc>

Glucose meters for medicare in USA

<http://government-diabetes.org/>

New kinds of high-tech homes for the elderly

http://www.mercurynews.com/breakingnews/ci_11096047?nclick_check=1

Intel's solution for chronic and age-related conditions

<http://www.hesmagazine.com/story.asp?sectionCode=196&storyCode=2048802>

Employing Telehealth to Enhance Overall Quality of Life and Health for Families

<http://www.liebertonline.com/doi/abs/10.1089/tmj.2008.0107>

AMD Global Telemedicine, Inc. deploys telemedicine devices into a newly launched child telehealth pilot program

<http://www.bio-medicine.org/medicine-news-1/Telemedicine-Becoming-More-Relevant-to-Children-26apos-3Bs-Health-Within-School-Systems--30810-1/>

MIDLANDS HOUSING register for your free invitation

Home | News | Features | Events | Directory | Jobs | About Us | Advertise | Subscribe | Contact Us

Keeping telecare on the line
18TH DECEMBER 2008
Midlands | South Derbyshire District Council

Technology changes at an unforgiving pace, but in the application of telecare provision South Derbyshire District Council's CareLine service constantly evolves to keep the pace - and meet the standards

The next stage in the ever-evolving life cycle of CareLine is the pilot launch of 'Telehealthcare'. It represents the latest application of computer technology to a service first established by South Derbyshire District Council (SDDC) way back in 1985. Ever since, it has evolved to utilise the latest offerings of the ever-burgeoning digital age.

The service pilot, an extension of the already formidable telecare offerings, will provide care thanks to a select range of technology applied in a person's own home. This 'robo-nurse' - or even 'robo-doctor' - will enable the remote monitoring of people's medical conditions and feed the data via computer straight to medical professionals. In that way, it will enable individuals to manage their conditions more effectively at home, improving their quality of life and preventing avoidable hospital admissions.

So, not only will it ease the burden on an often hard-pressed National Health Service, it will also ease some of the burdens of the people otherwise faced with the prospect of

Click here for Construction Liability advice

Search this site:
Search

Delcam
ps team
www.ps-team.com
0121 766 5544
enquiries@ps-team.com

Username: *
Password: *
Log in
Create new account
Request new password

Greener Business
Helping your business
Helping the environment

Women in Construction 2009

<http://www.housingexcellence.co.uk/features/keeping-telecare-line>

SwiftMD Provides Personal Health Records, 24/7 Web and Phone Access to Board-Certified Emergency Medicine Physicians

<http://www.marketwatch.com/news/story/SwiftMD-Empowers-Consumers-Businesses-Breakthrough/story.aspx?guid=%7B46B8D84B-0230-42C5-A090-484F52F3B528%7D>

Mobile phone text messaging for pharmaceutical care in a hospital in China

<http://jtt.rsmjournals.com/cgi/content/abstract/14/8/410>

VH treatment reaches far beyond RH19 – East Grinstead telemedicine

<http://www.thisissussex.co.uk/eastgrinstead/news/QVH-treatment-reaches-far-RH19/article-526197-detail/article.html>

Mobilkom Austria uses NFC to send blood pressure results to doctors

<http://www.nearfieldcommunicationsworld.com/2008/12/04/3354/mobilkom-austria-uses-nfc-to-send-blood-pressure-results-to-doctors/>

http://www.cqc.org.uk/news_and_events/reviews_in_0910_consultation.aspx

Wal-Mart's Digital Health Push

<http://www.techpolicycentral.com/2008/12/walmarts-digital-health-push.php>

Policy Enablers for Healthcare Information Technology <http://geekdoctor.blogspot.com/2008/12/policy-enablers-for-healthcare.html>

Nintendo to launch 'Wii TV'

<http://www.telegraph.co.uk/scienceandtechnology/technology/technologynews/4074679/Nintendo-to-launch-Wii-TV.html>

Haringey Falls Prevention Care Pathway (for older people aged 65+) – telecare reference

http://www.haringey.nhs.uk/world_class_commissioning/documents/pathways/falls/joint_falls_commissioning_plan_nov_08.doc

Enfield telecare equipment available

<http://www.enfield.gov.uk/313/Telecare%20equipment%20available.pdf>

JSNA – Somerset – telecare reference

<http://www.somerset.gov.uk/council/board3b%5C2008%20December%2017%20Item%208%20Joint%20Strategic%20Needs%20Assessment.pdf>

eHealth Insider- the news for 2009 – telehealth references

http://www.ehiprimarycare.com/news/4437/here_is_the_news_for_2009

What's In Store for 2009: Top Ten Trends & Forecast

<http://chilmarkresearch.com/2008/12/29/2009-top-ten-trends-and-forecast/>

VivoMetrics Partners With Continua Health Alliance to Advance Telehealth to Improve Patient Care

http://www.redorbit.com/news/health/1613703/vivometrics_partners_with_continua_health_alliance_to_advance_telehealth_to/

New Telehealth Strategy and Planning Organization Established in California

<http://www.healthnewsdirect.com/?p=476>

<http://cincinnati.bizjournals.com/cincinnati/othercities/sacramento/stories/2008/12/15/daily7.html>

<http://www.govhealthit.com/online/news/350717-1.html>

Health 2.0: User-Generated Healthcare (conference)

<http://www.health2con.com/>

Nursing in the Home

http://www.nursingcenter.com/library/JournalArticle.asp?Article_ID=834324

Internet health hub trialled in Swansea

<http://www.hesmagazine.com/story.asp?sectioncode=196&storyCode=2048844>

Greenland's National Management of Health Partners with AMD Global Telemedicine Inc. and AFHCAN to Install Telemedicine Encounter Management Systems (TEMS) Across Greenland

<http://www.prweb.com/releases/2008/12/prweb1753534.htm>

HIMSS releases healthcare reform blueprint for Obama and lawmakers

<http://www.healthcareitnews.com/story.cms?id=10603>

HIMSS - Enabling Healthcare Reform

Using Information Technology - Recommendations for the Obama Administration and 111th Congress <http://www.himss.org/2009calltoaction/HIMSSCallToActionDec2008.pdf>

OHSU study: nurse tracking of elderly patients saves lives
http://www.portlandtribune.com/news/story.php?story_id=122939846339877200

Text messages could help TB drug compliance
<http://story.theusnews.com/index.php/ct/9/cid/b8de8e630faf3631/id/448688/cs/1/>

Program promotes high-tech house calls – Oregon
<http://www.mailtribune.com/apps/pbcs.dll/article?AID=/20081229/NEWS/812290309/-1/rss14>

Financial Management in the NHS: Report on the NHS Summarised Accounts 2007-08 – NAO Report
http://www.nao.org.uk/publications/0809/nhs_financial_management.aspx

Will the PCT's split into purchaser and provider benefit nursing?
http://www.nursingtimes.net/This_weeks_issue/2008/12/will_the_pcts_split_into_purchaser_and_provider_benefit_nursing.html

Online Exhibition of 50+ Homes & Communities
<http://blog.aipathome.com/online-exhibition-of-50-homes-communities/>
<http://alzheimersgroup.org>

Council agrees revolution in social care – North Yorkshire
<http://www.scarborougheveningnews.co.uk/news/Council-agrees-revolution-in-social.4803060.jp>

Plan to bring hospital to patient's home – Trafford
http://www.manchestereveningnews.co.uk/news/health/s/1085567_plan_to_bring_hospital_to_patients_home

Rates and Determinants of Uptake and Use of an Internet Physical Activity and Weight Management Program in Office and Manufacturing Work Sites in England: Cohort Study
<http://www.jmir.org/2008/4/e56>

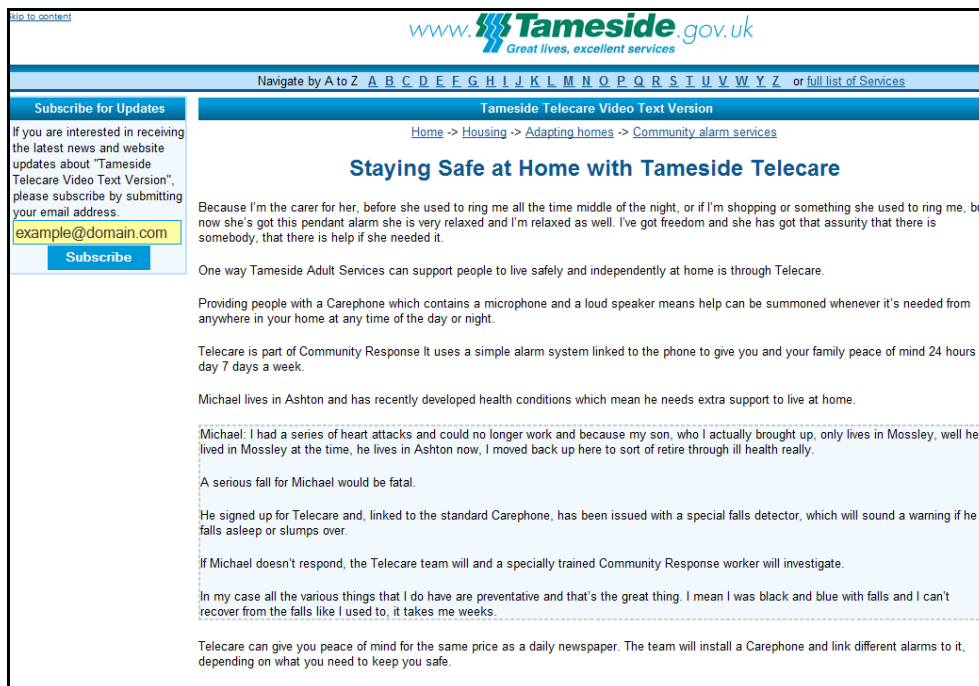
Activities in Telehealth, Telemedicine, and Health Technologies (2009 edition)
<http://www.federaltelemedicine.com/federal.html>

Philips scores top in patient monitoring
http://www.ehealthurope.net/news/4402/philips_scores_top_in_patient_monitoring



What is telemedicine – Wal-Mart Walk-in centre (video)

<http://www.cnn.com/video/#/video/health/2008/12/28/cohen.turn.your.head.click.cnn?iref=videosearch>



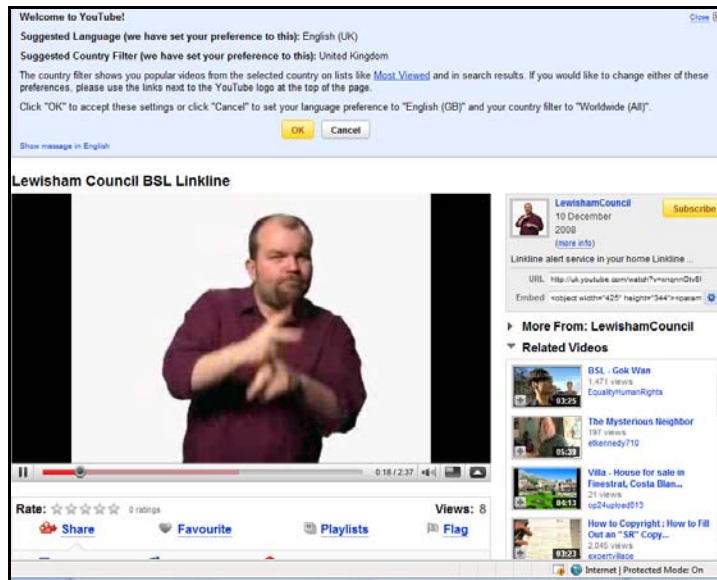
<http://www.tameside.gov.uk/communityalarm/videtext>

Telephone peer-delivered intervention for diabetes motivation and support: The telecare exploratory RCT

http://www.sciencedirect.com/science?_ob=ArticleURL&_udi=B6TBC-4TXDXH8-

[4& user=10& rdoc=1& fmt=& orig=search& sort=d&view=c& acct=C000050221& version=1& urlVersio
n=0& userid=10&md5=ca014bf49caaae8aa3cd054a8cfa01a8](http://www.youtube.com/watch?v=xnqnnOtv8Fc)

Lewisham BSL Linkline (You Tube)



<http://uk.youtube.com/watch?v=xnqnnOtv8Fc>

Also new on You Tube:

Telehealth Hackney: <http://uk.youtube.com/watch?v=KRvfVAWg5Bq>



Staffordshire: <http://www.localgov.tv/cgi-bin/details.pl?action=prog&id=544> (requires registration)

Other videos available from LocalGovTV (requires registration):

[Exploring the potential of Telecare & Telehealth technologies](#)

[Panel discussion - what stage are Councils at with Telecare?](#)

[Clarifying terminology - telecare, telehealth & assistive technology](#)

[The benefits of assistive technology - interview with Keren Down](#)

[Dr Carl Shakespeare - the potential of Telecare and assistive technology](#)

HUNGARIAN GOVERNMENT FUNDS MAJOR RESEARCH PROJECT TO TRANSFORM CARE OF ELDERLY CITIZENS; GE HEALTHCARE TO LEAD \$5.3M INITIATIVE IN HOME HEALTHCARE

http://pressroom.gehealthcare.com/proom/internet/NewsandEvents.jsp?release_id=15646

Telecare service web sites with video content

<http://www.vitaline.org.uk/index.html>

<http://www.kirklees.gov.uk/community/health-care/olderpeople/carephones.shtml>

<http://www.newhamhomes.com/Services/NewhamNetwork/AboutUs/newhamadvancedtelecareneat.htm>

http://www.norfolk.gov.uk/consumption/idcplg?IdcService=SS_GET_PAGE&nodeId=3572

<http://www.tameside.gov.uk/corpgen/new/commalarm.htm>

Devon's new care service for over-55s

A pioneering initiative between Devon County Council and the South Western Ambulance Service NHS Trust (SWAST) has been officially launched.

The Devon-wide pilot will support people aged 55 and over, living in their own homes and linked to a call centre, usually by a pendant alarm. The new service also extends to people living in sheltered or warden assisted housing.

<http://www.devon24.co.uk/northdevongazette/news/story.aspx?brand=ndgonline&category=news&tBrand=devon24&tCategory=newsndga&itemid=DEED05%20Dec%202008%2014%3A53%3A44%3A800>

Vodafone invests in mobile health firm – t+ Medical

http://www.ehealthurope.net/news/4415/vodafone_invests_in_mobile_health_firm

Oxford University firm's patient warning system wins top prize

<http://www.hesmagazine.com/story.asp?sectioncode=196&storyCode=2048814>

Risks: Extra Sleep Is Found to Lower a Heart Risk

http://www.nytimes.com/2008/12/30/health/30risk.html?_r=1&ref=science

High-tech health: Doctors perform 'e-visits' for patients

<http://www.theadvertiser.com/article/20090101/LIFESTYLE/901010326/1024>

Delivering Care Anytime, Anywhere: Telehealth Alters the Medical Ecosystem

<http://www.chcf.org/topics/view.cfm?itemid=133787>

Home heart monitoring offered at St. Mary's/Innovis Health

<http://www.dl-online.com/articles/index.cfm?id=40064§ion=news>

Electronic Medical Records To Improve Patient Care – Canada

<http://emrcanada.wordpress.com/2008/12/17/electronic-medical-records-to-improve-patient-care/>

Healthcare Blogs

- [The Health Media Watch](#)
- [The Lancet Global Health Network](#)
- [World Health News](#)
- [Little Devices That Could](#)
- [Innocentive](#)
- [On Informatics](#)
- [Technology, Health and Development](#)



Telecare proves a lifesaver

<http://www.lincolnshire.gov.uk/section.asp?catid=2148&docid=68714>

Newham and Milton Keynes Receive European Awards for Use of Telehealthcare

<http://www.ehealthnews.eu/content/view/1428/26/>

Health technology to be rolled out to care homes – Norwich

<http://new.edp24.co.uk/content/news/storyrss.aspx?brand=EDPOnline&category=News&tBrand=EDPOnline&tCategory=News&itemid=NOED11%20Dec%202008%2015%3A26%3A41%3A937>

Effects of Telephone Counseling on Antipsychotic Adherence and Emergency Department Utilization

<http://articles.icmcc.org/wpc/?p=4029>

AMAC and Intel Ink Channel Partner Deal for Telehealth System

<http://www.tradingmarkets.com/.site/news/Stock%20News/2069588/>

Project Lifessaver - Transmitter bracelet locates lost patients

<http://www.heraldtribune.com/article/20081210/ARTICLE/812100322/-1/NEWSITEMAP>

Euope launches CommonWell Project

http://www.ehealthurope.net/news/4404/europe_launches_commonwell_project

Safely implementing health information and converging technologies

http://www.jointcommission.org/SentinelEvents/SentinelEventAlert/sea_42.htm

Digital Healthcare raises £2.6m funding

http://www.ehealthurope.net/news/4390/digital_healthcare_raises_£2.6m_funding

Better search: a cure for cyberchondria?

http://www.ehealthurope.net/news/4379/better_search:_a_cure_for_cyberchondria_tcg

Fujitsu Siemens launches health tablet PC

http://www.ehealthurope.net/news/4362/fujitsu_siemens_launches_health_tablet_pc

The telecare industry hasn't grown as quickly as expected. What is holding it back, asks Douglas Brown

<http://www.healthinvestor.co.uk/ShowArticle.aspx?ID=380>

Home Telehealth: Mainstreaming What We Do Well

<http://www.liebertonline.com/doi/abs/10.1089/tmj.2008.0121>

The BMJ Evidence Centre

http://www.bmj.com/cgi/content/extract/337/nov07_3/a2438

Benefits of homecare technology highlighted in report – Aberdeenshire Telecare Project

<http://www.aberdeenshire.gov.uk/news/release.asp?newsID=981>

European Smart-Home Initiatives Get a Boost from Nokia

<http://hiddenwires.co.uk/resourcesarticles2009/articles20090102-02.html>

Invicta Telecare welcomes new contracts

<http://www.24dash.com/news/Housing/2008-12-09-Invicta-Telecare-welcomes-new-contracts>

<http://www.devon24.co.uk/northdevongazette/news/story.aspx?brand=NDGOnline&category=news&tBrand=devon24&tCategory=newsndga&itemid=DEED05%20Dec%202008%2014%3A53%3A44%3A800>

Remote Telemonitoring Service - Long Listed Candidates for the Remote Telemonitoring Northern Ireland (RTNI) Service

<http://www.eu-cch.org/index/remote-monitoring-service.htm>

Eliminating Medical Device RF Interference

<http://www.ecnmag.com/Industry-Focus-Eliminating-Medical-Device-RF-Interference.aspx?menuid=586>

Safer houses - fire deaths halved in UK - but 2 out of 8 homes still need a smoke alarm say Ministers

<https://nds.coi.gov.uk/imagelibrary/detail.asp?MediaDetailsID=258366&HUserID=878,793,889,853,778,871,871,845,786,674,677,767,684,762,718,674,708,683,706,718,674>

Consultation on GP Quality Incentive Scheme launched

<https://nds.coi.gov.uk/imagelibrary/detail.asp?MediaDetailsID=255897&HUserID=878,793,889,853,778,871,871,845,786,674,677,767,684,762,718,674,708,683,706,718,674>

(DH) Health and Care Workers to set up new social enterprises

<https://nds.coi.gov.uk/imagelibrary/detail.asp?MediaDetailsID=257886&HUserID=878,793,889,853,778,871,871,845,786,674,677,767,684,762,718,674,708,683,706,718,674>

(DH) Stroke awareness campaign to save lives

<https://nds.coi.gov.uk/imagelibrary/detail.asp?MediaDetailsID=259559&HUserID=878,793,889,853,778,871,871,845,786,674,677,767,684,762,718,674,708,683,706,718,674>

DWP) Independent living - involving disabled people: Government response to the consultation on implementation and monitoring of the Independent Living Strategy

<https://nds.coi.gov.uk/imagelibrary/detail.asp?MediaDetailsID=258311&HUserID=878,793,889,853,778,871,871,845,786,674,677,767,684,762,718,674,708,683,706,718,674>

Joint Commission – Hospital of the future Guide

http://www.jointcommission.org/NR/rdonlyres/1C9A7079-7A29-4658-B80D-A7DF8771309B/0/Hospital_Future.pdf

Medicare and Medicaid primers

<http://www.kff.org/medicaid/7334.cfm>
<http://www.kff.org/medicare/7615.cfm>

FDA Website. Home Healthcare Medical Devices: Blood Glucose Meters - Getting the Most Out of Your Meter. February 29, 2008.

<http://www.fda.gov/cdrh/cdrhhhc/bgm.html>
<http://www.fda.gov/cdrh/cdrhhhc/bgm.pdf>

Nokia Home Control Center - My home is where my phone is

<http://smarthomepartnering.com/cms/>

HL7 Develops Standard for PHRs

<http://healthcare-informatics.com/ME2/dirmod.asp?sid=&nm=&type=news&mod=News&mid=9A02E3B96F2A415ABC72CB5F516B4C10&tier=3&nid=271888136DAA45C9BE6A7E30ACF28EA2>

FDA forms partnership with WebMD

http://www.upi.com/Science_News/2008/12/03/FDA_forms_partnership_with_WebMD/UPI-51681228328221/

Patients' webcam surgeries with GPs – Swansea

<http://www.thisissouthwales.co.uk/news/Patients-webcam-surgeries-GPs/article-541852-detail/article.html>

Philips Further Expands Home Healthcare Solutions

<http://www.ehealthnews.eu/content/view/1427/26/>

Telephonic Disease Management for Severe Mental Illness

<http://www.worldhealthcareblog.org/2008/12/13/telephonic-disease-management-for-severe-mental-illness/>

Air Bags for the Elderly

http://www.nytimes.com/2008/12/14/magazine/14ideas-section01-t-001.html?_r=1

AHRQ says telehealth can improve home care

<http://www.tmcnet.com/usubmit/2008/11/08/3771061.htm>

HL7 releases 'breakthrough' work

<http://www.healthcareitnews.com/story.cms?id=10447>

Pathfinder - migration to 21CN - South Wales

http://www.openreach.co.uk/orpg/news/21cn/briefing_21cn00708.do

Home telemonitoring is the wave of the future

<http://www.webmd.com/video/home-health-monitoring>

Ethical Frameworks for Telecare Technologies (EFORTT)

<http://www.lancs.ac.uk/fass/ihr/activities/630/>

Taking The Weight Off Your Mobile Phone

<http://www.wirelesshealthcare.co.uk/wh/news/wk51-08-0001.htm>

Vodafone Funds Diabetes Monitoring Technology Company

<http://www.wirelesshealthcare.co.uk/wh/news/wk51-08-0007.htm>



Latest CSHS newsletter covers telecare – register at
<http://www.cornwall.ac.uk/cshs/index.php?page= Home>

Continua Certification to be Available by End of 2008

<http://www.ehealthserver.com/the-news/research-developments/85-continua-certification-to-be-available-by-end-of-2008>

IT PROJECT INNOVATION AWARD

Winner: Hull City Council - STREAM Independent Living Project

TELECOMS INNOVATION AWARD

Commended: Cheshire CC- Cheshire Telecare Project; Lincolnshire CC - CLIPS Project.

<http://www.governmenttechnology.co.uk/content/view/566/98/>

Health Monitoring With Your Cell Phone

<http://www.sciencedaily.com/releases/2008/12/081222221600.htm>

Newham and Milton Keynes Receive Prestigious European Awards for Pioneering Use of Telehealthcare

<http://openpr.com/news/63056/Newham-and-Milton-Keynes-Receive-Prestigious-European-Awards-for-Pioneering-Use-of-Telehealthcare.html>

Virtual sheltered housing scheme piloted in Angus

<http://www.pressandjournal.co.uk/Article.aspx/1002946?UserKey=>

New research on telecare in Scotland, We are seeking to identify carers who have had experience of using telecare services

<http://www.carerscotland.org/Policyandpractice/Conferenceseventsandconsultations/Newresearchontelear e>

Telecare Information Pack – Aberdeen

<http://www.aberdeencity.gov.uk/nmsruntime/saveasdialog.asp?IID=19895&SID=8645>

Telecare and telehealth in Newham -- e-Forum Learning Journey report

http://www.eu-forum.org/article.php3?id_article=825&debut_article=45

Four week telehealth network course offered for family and friends affected by Alzheimer's (Canada)

<http://swbooster.com/index.cfm?sid=204375&sc=44>

Mobile teleconsulting can evaluate stroke patients

<http://www.reuters.com/article/healthNews/idUSTRE4BL4CH20081222?feedType=RSS&feedName=health News>

A new telehealth age dawns

<http://www.eetimes.com/news/latest/showArticle.jhtml?articleID=211100011>

Personal Health Monitor IV - Cell Phones & TeleHealth

<http://dallasdefee.blogspot.com/2007/11/cell-phones-and-telehealth.html>

Doctors on screen coming to Plains Area – IOWA

<http://www.lemarssentinel.com/story/1488094.html>

A Systematic Review of the Key Indicators for Assessing Telehomecare Cost-Effectiveness
<http://www.liebertonline.com/doi/abs/10.1089/tmj.2008.0009>

Home Telehealth: Mainstreaming What We Do Well
<http://www.liebertonline.com/doi/abs/10.1089/tmj.2008.0121>

New mobile healthcare technology could make stroke expertise available to all.
<http://www.itpro.co.uk/609392/mobile-telemedicine-helping-stroke-patients>

Mobile teleconsulting can evaluate stroke patients
<http://www.bdnnews24.com/details.php?id=71941&cid=13>

THE IMPACT OF BROADBAND ON SENIOR CITIZENS A Study Commissioned by the U.S. Chamber of Commerce DECEMBER 2008

<http://www.uschamber.com/assets/env/broadbandseniors.pdf>

NY State Health Department Unveils Web-Based Tool to Help Plan High-Performing Health Care System Identifies High Rates of Hospitalizations for Preventable Conditions, Reveals Health Disparities

http://www.health.state.ny.us/press/releases/2008/2008-12-23_department_unveils_prevention_quality_indicator_tool.htm
https://apps.nyhealth.gov/statistics/prevention/quality_indicators/start.map.jsessionid=170053B9A885071FED11749036999065

Kiosk telemedicine in US independent living facility
<http://pittsburgh.bizjournals.com/pittsburgh/stories/2008/12/22/story7.html>

Strengthening the Safety Net for Online Seniors: Factors Influencing Differences in Health Information Seeking Among Older Internet Users
<http://www.informaworld.com/smpp/content~content=a906264894~db=all~order=page>

Telemedicine Takes Healthcare To School
<http://www.wirelesshealthcare.co.uk/wh/news/wk50-08-0006.htm>

Health IT improves quality, lowers costs for chronically ill
<http://www.fiercehealthit.com/story/health-it-improves-quality-lowers-costs-chronically-ill/2008-12-07>

The doc is in -- with wireless monitoring (Oregon USA)
<http://www.oregonlive.com/health/oregonian/index.ssf?/base/news/1229988315262550.xml&coll=7&thispage=2>

Mobile teleconsulting can evaluate stroke patients
http://news.yahoo.com/s/nm/20081222/hl_nm/us_mobile_teleconsulting;_ylt=Ao3XifF2ZUbCllsMt64VqUgQ.3QA

HHS Has Taken Important Steps to Address Privacy Principles and Challenges, Although More Work Remains

(USA)

<http://www.gao.gov/new.items/d081138.pdf>

WHIT08 - EC Workshop Procuring for health benefits: Critical Factors for Beneficial Deployment of Innovative eHealth and Telemedicine Services 6 November 2008

European Commission WHIT 08- Procurement Workshop

DG Information Society and Media November 6, 2008, Copenhagen

ICT for Health Unit

http://ec.europa.eu/information_society/activities/health/docs/events/whit2008/ec-whit08report-final.pdf

Telemedicine helps stroke patients

<http://heart.battlingforhealth.com/2008/12/telemedicine-helps-stroke-patients/>

(DH) Drug Information and Prescribing Guidance to become a key part of NHS Evidence

<https://nds.coi.gov.uk/imagelibrary/detail.asp?MediaDetailsID=260283&HUserID=878,793,889,853,778,871,871,845,786,674,677,767,684,762,718,674,708,683,706,718,674>

DoD (USA) Launches Personal Health Record Pilot

http://www.fiercehealthcare.com/press-releases/dod-launches-personal-health-record-pilot?utm_medium=nl&utm_source=internal&cmp-id=EMC-NL-FHI&dest=FH

Health IT improves quality, lowers costs for chronically ill

http://www.fiercehealthit.com/story/health-it-improves-quality-lowers-costs-chronically-ill/2008-12-07?utm_medium=nl&utm_source=internal&cmp-id=EMC-NL-FHI&dest=FHI

MU study says Palm Pilots bridge gap in doctor-patient communication (psychological therapy)

<http://www.kansascity.com/115/story/928550.html>

Telecare plan spells independence – Wrexham

<http://www.wrexhamchronicle.co.uk/wrexham-news/local-wrexham-news/2008/12/03/telecare-plan-spells-independence-88713-22394362/>

Social/health networking sites:

<http://www.patientslikeme.com/>

<http://americanwell.com/>

<http://www.tyze.com>

Joint Commission alert: Technology is not the solution to everything

http://www.fiercehealthcare.com/story/joint-commission-alert-technology-not-solution-everything/2008-12-12?utm_medium=nl&utm_source=internal&cmp-id=EMC-NL-FH&dest=FH

CQC Annual health check to be replaced with 'periodic reviews'

[http://www.hsj.co.uk/news/2008/12/annual_health_check_to_be_replaced_with_periodic_reviews.html?tmcsTrackingInfo=\\$7Vv4vxuZc5O5iilSaMC0igTIWvKGvTMtyObI_dtvnJIGA0UqkgLrudGyMDw51Ejrl7UOT-K3Nd4\\$](http://www.hsj.co.uk/news/2008/12/annual_health_check_to_be_replaced_with_periodic_reviews.html?tmcsTrackingInfo=$7Vv4vxuZc5O5iilSaMC0igTIWvKGvTMtyObI_dtvnJIGA0UqkgLrudGyMDw51Ejrl7UOT-K3Nd4$)

<http://www.cqc.org.uk/pdf/CQC%20reviews%200910%20consultation.pdf>

Telecare scheme is a life-saver – Barnet

<http://www.the-archer.co.uk/archive/2008/2008Oct11.pdf>

BARNSELY
Metropolitan Borough Council

Seasons Greetings

Navigation: A to Z of Services: A B C D E F G H I J K L M N O P Q R S T U V W X Y Z

Assistive Technologies, Central Call & Telecare

Looking for something similar? Try: Direct Payments, Edith, Equipment and Adaptations, Jackie, Marion, Safeguarding Adults, Shirley, Supporting People Homepage, Tony

TELECARE

Telecare operates as an extension to the community life line "Central Call". Telecare is remote monitors that automatically raise an alert if a risk is detected. This may be risks such as fire, carbon monoxide, temperature extremes or the danger of falling without being able to contact help. Packages are also available for service users who suffer from memory loss.

If you would like a demonstration of "Telecare" please contact Central Call and we will be delighted to visit you at your home or a place of your choice.

Telecare costs from as little as 50p and a maximum of £1 per week, this is an addition to the charge for community life lines. Community life charges can be viewed at www.barnsley.gov.uk/centralcall or by calling our office on 01226 775671.

Click here to view a case study for service users who may be at risk from falling: [Falls video](#).

Available packages:

- Safe and secure
- Medication reminder
- Falls
- Cognitive Decline

For further information on these or other services available from Central Call please phone: 01226 775671.

http://www.barnsley.gov.uk/bguk/Health_Wellbeing_Care/Individual%20Budgets%20and%20Self%20Directed%20Support/Telecare.htm

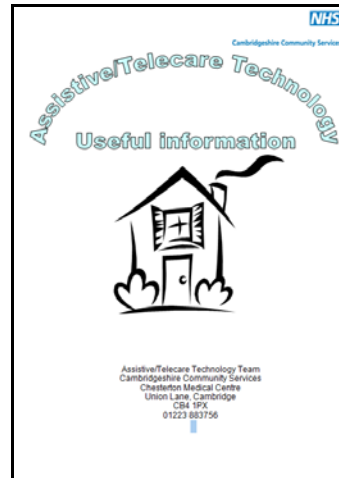
Personalized Medicine, the Next Frontier

<http://e-patients.net/archives/2008/12/personalized-medicine-the-next-frontier.html>

NHS Scotland eHealth Strategy

http://www.e-health-insider.com/img/document_library0282/ehealthstrategy-scotland08.pdf

Assistive/Telecare Technology Team
Cambridgeshire Community Services



http://www.cambridgeshire-pct.nhs.uk/documents/Provider%20Services/Adult%20Services/assistive%20technology/ATT_useful_information_pack.doc?preventCache=05%2F12%2F2008+14%3A30

Keogh promotes use of the NHS Number

http://www.ehiprimarycare.com/news/4392/keogh_promotes_use_of_the_nhs_number

http://www.dh.gov.uk/en/Publicationsandstatistics/Lettersandcirculars/Dearcolleagueletters/DH_091407

'Self-Weighing Promotes Weight Loss for Obese Adults'

<http://www.bewellbuddy.com/2008/12/self-weighing-promotes-weight-loss-for-obese-adults/>

TRIAGE-CRT Telemonitoring in Patients With CHF and Indication of CRT-D

<http://clinicaltrials.gov/ct2/show/NCT00395642?term=crt&rank=12>

Acceptability of an Electronic Self-report Assessment Program for Patients With Cancer

<http://www.mdlinx.com/NurseLinx/xml-article.cfm/2505170>

Patient keeps hospital appointment over the internet for first time in Wales

<http://www.walesonline.co.uk/news/wales-news/2008/12/11/patient-keeps-hospital-appointment-over-the-internet-for-first-time-in-wales-91466-22451281/>

Raleigh's TeleHealth Services Creates Pediatric Health Channel

<http://wake.mync.com/site/wake/news/story/21616/raleighs-telehealth-services-creates-pediatric-health-channel>

Effect of Electronic Prescribing With Formulary Decision Support on Medication Use and Cost

<http://archinte.ama-assn.org/cgi/content/abstract/168/22/2433>

Delivering Care Anytime, Anywhere: Telehealth Alters the Medical Ecosystem

<http://www.chcf.org/topics/view.cfm?itemid=133787>

The Doctor Will E-Mail You Now

<http://www.newsweek.com/id/173874>

Hospital Goes HD with Telemedicine (Ohio)

<http://www.healthdatamanagement.com/news/telemedicine27412-1.html>

[*TOC IJBET Vol 2-1 2009*](#)

[International Journal of Biomedical Engineering and Technology \(IJBET\)](#), TOC Volume 2 - Issue 1 - 2009
Special Issue on Telemedicine and e-Health

[Wireless monitoring of cardiac activity: a critical review](#)

“Despite significant progress and improvement made in its prevention and treatment, Cardiovascular Disease (CVD) remains to be the main cause of mortality and morbidity in the industrialised world. Patients with the risk of acute heart problems need precise and continuous monitoring. Remote monitoring of patients’ heart activity enables the healthcare providers to access the crucial data in real time and help the patients to benefit from mobility in the hospital, home or workplace. This paper critically reviews the current trends and significant challenges in this area and suggests the next steps toward upgrading the ubiquitous healthcare.”

Hossein Fariborzi, Mahmoud Moghavvemi, IJBET 2009 - Vol. 2, No.1 pp. 4 - 28, DOI:
10.1504/IJBET.2009.021905

<http://articles.icmcc.org/wpc/?p=3975>

Functional and Clinical Outcomes of Telemedicine in Patients With Spinal Cord Injury

[http://www.sciencedirect.com/science?_ob=ArticleURL&_udi=B6WB6-4V2NC01-K&_user=10&_coverDate=12%2F31%2F2008&_rdoc=19&_fmt=high&_orig=browse&_srch=doc-info\(%23toc%236702%232008%23999109987%23746242%23FLA%23display%23Volume\)&_cdi=6702&_sort=d&_docanchor=&_ct=33&_acct=C000050221&_version=1&_urlVersion=0&_userid=10&md5=506b896c0594ea3654aebd37807d10fa](http://www.sciencedirect.com/science?_ob=ArticleURL&_udi=B6WB6-4V2NC01-K&_user=10&_coverDate=12%2F31%2F2008&_rdoc=19&_fmt=high&_orig=browse&_srch=doc-info(%23toc%236702%232008%23999109987%23746242%23FLA%23display%23Volume)&_cdi=6702&_sort=d&_docanchor=&_ct=33&_acct=C000050221&_version=1&_urlVersion=0&_userid=10&md5=506b896c0594ea3654aebd37807d10fa)

Technology allows hospital to escape its four walls

http://www.nationmultimedia.com/2008/12/09/technology/technology_30090557.php

Patient safety telemedicine watch saves lives (video)

<http://doctors.findfastr.com/4/patient-safety-telemedicine-watch-saves-lives>

For world's sick, 'help is just an e-mail away'

http://www.chicagotribune.com/news/nationworld/chi-telemedicine_slider_bdnov30,0,3264686.story

http://clinicaltrials.gov/ct2/show/NCT00781365?spons=%22HealthPartners+Research+Foundation%22&spons_ex=Y&rank=6

<http://clinicaltrials.gov>

Secure Telemonitoring System for Delivering Telerehabilitation Therapy to Enhance Children's Communication Function to Home

<http://www.liebertonline.com/doi/abs/10.1089/tmj.2008.0003>

The Home HF Study: A multi-centre randomised trial of home telemonitoring in a general heart failure population with co-morbidity

<http://spo.escardio.org/CongressPresentations/ESC2008/2542/2542.pdf>

Independent living range hits 3,500 products - NRS

<http://www.hesmagazine.com/story.asp?sectioncode=196&storyCode=2048854>

Europe launches CommonWell project

http://www.ehealthurope.net/news/4404/europe_launches_commonwell_project

Award for housing association's call centre

<http://www.callcentrehelper.com/award-for-housing-associations-call-centre-2427.htm>

Invicta Telecare welcomes new contracts

<http://www.24dash.com/news/Housing/2008-12-09-Invicta-Telecare-welcomes-new-contracts>

Telecare Providing Vital Support For People With Dementia And Their Families

<http://www.medicalnewstoday.com/articles/133353.php>

Creative approaches to care and support must be provided

http://www.publicservice.co.uk/feature_story.asp?id=10961

WORKING TOGETHER TELEHEALTH&TELECARE CONFERENCE 2009

http://www.sct.scot.nhs.uk/documents/SCT_Prog_4.pdf

World Blood Glucose Meters and Strips Market

http://www.businesswire.com/portal/site/google/?ndmViewId=news_view&newsId=20081216005685&newsLang=en

Home Diagnostics is Named One of Forbes Magazine's "200 Best Small Companies"

http://www.businesswire.com/portal/site/google/?ndmViewId=news_view&newsId=20081216005155&newsLang=en

Insulin Pump Therapy

<http://diabeticdiets.wordpress.com/2008/12/21/insulin-pump-therapy/>

Tender: Leicester: alarm-monitoring

<http://www.publictenders.net/modules.php?op=modload&name=News&file=article&sid=72549&topic=202&newlang=eng>

Quality framework improves care for long-term condition patients

<http://www.healthcarerepublic.com/rss/news/article/868442/Quality-framework-improves-care-long-term-conditions-patients/>

General enquiries: 03456 009 009 Site map | Listen | Print | Help A A A

SURREY COUNTY COUNCIL Search site... Go

Home | News | Events | Services | Do it online | Maps | Jobs | Get involved | Contact us

Home > News > Surrey Matters > Winter Surrey Matters > Surrey Matters - winter 2008 - When I'm 64 - 74 - 84

Surrey Matters - winter 2008 - When I'm 64 - 74 - 84

Retirement

The time to do all the things you've planned, but can you guarantee yours will be as happy and healthy as you'd like? If you should find yourself in need of help, Surrey Matters has looked at some of the options available to you.

Recently the Benefits Team won an accolade from Help the Aged, for the way it had helped Surrey residents aged over 60 claim more than £1.5 million in benefits. "That was cash that helped many of our residents stay independent and retain their pride," said Vincent McClave, a Benefits and Charging Officer for Surrey County Council.

But it isn't just about money, or what the council provides. We all need to think about how we can stay comfortable and safe in our own homes for as long as possible, if that's what we want.

One way we can get help is through using telecare equipment including unobtrusive sensors and monitors for the home that are linked to a call centre. All alerts are logged by call centre staff who inform the emergency contact or the emergency services.

"Monitoring devices have come a long way since the first necklace alarm was introduced 20 years ago," said Adrian Goddings, an occupational therapist, who assesses clients at Telecare's Smart House in Caterham, which is fitted with the whole range of monitoring equipment Telecare provides.

"Everything we offer is tailored to individual needs and offers 24-hour monitoring," he said. "We can raise the alert if a client has a fall, stays in bed longer than usual, becomes suddenly ill or if they get an unexpected caller. We can help in all situations," he added.

"All the equipment is designed to support people who want to stay in their homes and keep their independence," he added. "That is our commitment supported by Surrey County Council."

Extra Care Housing

Surrey County Council is working with district and borough councils and the NHS to develop around 600 additional Extra Care Housing spaces.

These homes offer independent living with communal services such as shops, leisure and meeting rooms. It means older residents aren't alone, but they can have their own space and feel safe knowing there

https://online.surreycc.gov.uk/sccwebsite/sccwspages.nsf/LookupWebPagesByTITLE_RTF/Surrey+Matters+-+winter+2008+-+When+I'm+64+-+74+-+84?opendocument

Health Technologies KTN is developing a UK directory of Assisted Living Organisations
<http://www.cambridgenetwork.co.uk/news/article/default.aspx?objid=54850>

Remotely tracking elderly's moves & vital signs, the future?
<http://hv120.cn/index.php/article/diseases/2008-12-27/5188.html>

Remote Physiological Monitoring System Gains Medical CE Approval
<http://www.pcb007.com/pages/zone.cgi?a=46921>

News sites

- <http://www.govhealthit.com>
- <http://www.healthnewsdirect.com>
- <http://www.ehealthurope.net/>
- <http://www.e-health-insider.com/>

Telecare Aware
One-stop for Telecare and Telehealth News Updates

Latest News Items Videos Events Opinion What is Telecare? Useful Sites About / Contact

Put search text here and press Enter key...

To find pre-2009 items, look in the Archives section on pages with the email alerts sign-up box.

Aberdeenshire's telecare Christmas cracker

Wednesday, 17 December 2008 00:00

Just in this morning, a press release from Aberdeenshire Council announcing the publication of the evaluation of their 18 month telecare project. It's a cracker, in every sense of the word.*

The headline news is excellent. Out of 51 people referred to the project, 34 people benefited from an increase in their independence at home, 8 people managed to stay at home instead of entering into a care home, and in 6 cases an unplanned hospital admission was prevented.

No corny jokes, just some great gifts pop out when you download the 64 page report.

I have only had time yet to skim-read through it but I can see that the report contains information that should shake things up on the UK telecare scene. Telecare Aware readers will find their own significant elements, but of particular interest to me were comments about suppliers, their delivery times and relationship to end users, and observations on the NHS PASA National Framework Agreement.

Thank you, Aberdeenshire, and the researchers at the Robert Gordon University, for such a readable, informative and potentially explosive report! Press release: [Benefits of homecare technology highlighted in report.](#)

* Ok, ok, for non-Commonwealth readers who don't get the Christmas cracker reference, [see here.](#)

[Comments \(1\)](#)

Telehealth in Hackney (UK)

Tuesday, 16 December 2008 00:00

3 minutes 21 seconds. Title: *Telehealth in Hackney*

This is the **clearest** explanation I have seen of how remote patient health monitoring is managed in the NHS, what patients do, and its benefits. The 3.21 minute video on YouTube does not hide its Docobo origin, but that fact is not 'in-your-face'.

tynetec
Innovative & Trusted Technology. Quality Assured Products & Service

AlteraCare
SOFTWARE telecare sensors eg. fall detector, pendants

Adventxt
a 'future proof' scheme alarm system

Sayphone21
best in class @home

ATA 2009
The world's largest meeting & exposition focusing exclusively on telemedicine
April 24-26, 2009 in Las Vegas, NV

See for Yourself

<http://www.telecareaware.com/>

Eight different versions of the Tameside Telecare video have been produced on a single DVD, to satisfy Tameside's requirement for accessibility of information. Five community languages, subtitles and British Sign Language versions ensure that every community member can find out about the new warden response and alarm service on offer

FTL IM@GEWORKS
VIDEO PRODUCTION FOR THE PUBLIC SECTOR

home services gallery diets about contact us

Eight different versions of the Tameside Telecare video have been produced on a single DVD, to satisfy Tameside's requirement for accessibility of information. Five community languages, subtitles and British Sign Language versions ensure that every community member can find out about the new warden response and alarm service on offer.

See for Yourself

http://ftlimageworks.net/gallery_tameside.html

Remotely tracking elderly's moves & vital signs, the future?

<http://hv120.cn/index.php/article/diseases/2008-12-27/5188.html>

Remote Physiological Monitoring System Gains Medical CE Approval

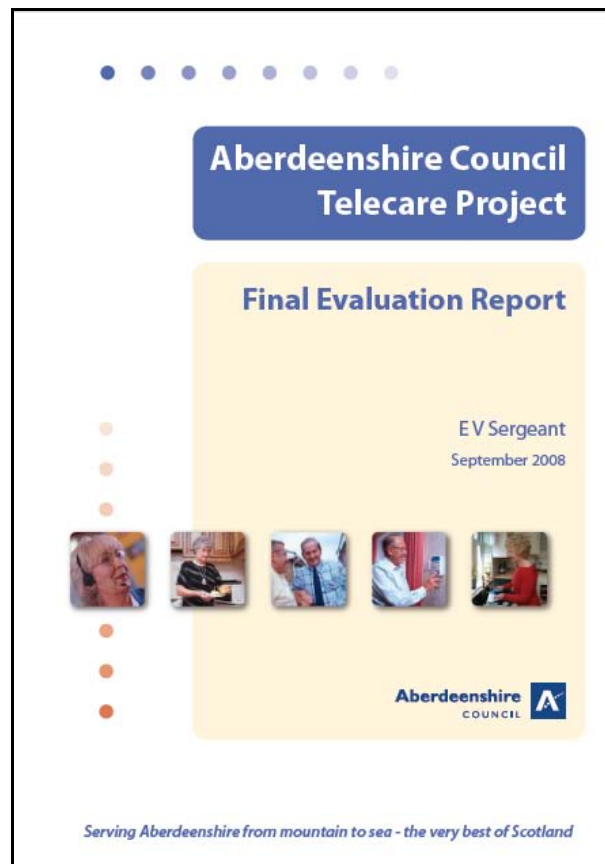
<http://www.pcb007.com/pages/zone.cgi?a=46921>

Let a Roman goddess empower your services – Pellonia by Alertacall

<http://www.pellonia.com/news02dec08.cfm>

Creating nursing homes worth living in

<http://www.pbn.com/stories/37065.html>



<http://www.aberdeenshire.gov.uk/about/departments/AberdeenshireTelecareProjectEvaluationReport.pdf>

Lancashire OAP's homes 'may be fitted with high-tech sensors'

http://www.lancashiretelegraph.co.uk/news/4016484.Lancashire_OAP_s_homes_may_be_fitted_with_high_tech_sensors/

New London Telecare Poster



<http://www.londontelecare.com/>

Our other sites: Corporate home | Contact us | Glossary | What's new | FAQ | Help | Sitemap

Direct contact 020 7344 4400
contactus@communities.gov.uk

SEARCH: Enter keywords

All content | Publications

Advanced search

You may also be interested in ...

On this site

- Lifetime Homes, Lifetime Neighbourhoods: A National Strategy for Housing in an Ageing Society

Home Information Packs

We have introduced Home Information Packs to improve the process of buying and selling.

HOME INFORMATION PACK

Have YOUR SAY

- Discussion forums
- Blogs
- Feedback
- Newsletters

My favourites

You currently have no favourites saved.

Add this page to my favourites

COMMUNITIES AND LOCAL GOVERNMENT

Housing :: Publications :: Strategies and action plans :: Delivering Lifetime Homes, Lifetime Neighbourhoods - A National Strategy for Housing in an Ageing Society

Housing

Delivering Lifetime Homes, Lifetime Neighbourhoods - A National Strategy for Housing in an Ageing Society

Published: 23 December 2008

Type(s): Strategies and action plans, Reports and summaries

Site: Housing

Product code: 08HHS05673

ISBN: 9781409809555

Price: Free

Summary

This publication is a follow up to *Lifetime Homes, Lifetime Neighbourhoods: A National Strategy for Housing in an Ageing Society* which was published in February 2008. It sets out a record of the actions and recommendations which were proposed in the above strategy and measure which been taken and progress made on these. It also describes the various key initiatives which are being taken or are due to be launched to implement the strategy.

Order

This publication is only available online - see below to download

Delivering Lifetime Homes, Lifetime Neighbourhoods - A National Strategy for Housing in an Ageing Society

This publication is a follow up to *Lifetime Homes, Lifetime Neighbourhoods: A National Strategy for Housing in an Ageing Society* which was published in February 2008. It sets out a record of the actions and recommendations which were proposed in the above strategy and measure which been taken and progress made on these. It also describes the various key initiatives which are being taken or are due to be launched to implement the strategy.

<http://www.communities.gov.uk/publications/housing/housingageingsociety>

a) CSIP Networks events planner

Forthcoming Event List (28 December 2008)

Date	Event Title	Network	Places Remaining	Book
09/01/09	West Midlands Personalisation Event	Personalisation	4 of 75	Book now
13/01/09	Sixth Annual Drug and Alcohol Professionals Conference	Alcohol Learning Centre	-	N/A
13/01/09	Personalisation, Safeguarding & the No Secrets Review	Personalisation	14 of 60	Book now
15/01/09	Outcome-focused reviews	Personalisation	17 of 25	Book now
16/01/09	Resource Allocation System	Personalisation	20 of 50	Book now
22/01/09 to 23/01/09	Outcome-focused reviews. Event Timings: 22nd Jan 11am-6:15pm and 23rd 9am-3:15pm	Personalisation	42 of 50	Book now
22/01/09	Whole System Demonstrator Programme (WSDAN) - Integrated care using telecare and telehealth	Telecare LIN	FULL	FULL
22/01/09	Common Assessment Framework (CAF) for Adults Consultation Events – London	Personalisation	71 of 90	Book now
22/01/09	West Midlands Regional Housing LIN Meeting	Housing	Reserve places available	Add me to the reserve list
27/01/09	Common Assessment Framework (CAF) for Adults Consultation Events - Newcastle	Personalisation	76 of 90	Book now
27/01/09 to 28/01/09	Self directed support - The future for supported housing? - 15th Annual Housing, Care and Support conference	Housing	-	N/A
29/01/09	North East Regional Housing LIN Meeting	Housing	16 of 35	Book now
29/01/09	Common Assessment Framework (CAF) for Adults Consultation Events – Nottingham	Personalisation	84 of 90	Book now
29/01/09	Planning for Transformation Framework Review 29th January 2pm-5pm	Personalisation	FULL	FULL
03/02/09	Common Assessment Framework (CAF) for Adults Consultation Events – London	Personalisation	73 of 90	Book now

05/02/09	Common Assessment Framework (CAF) for Adults Consultation Events – Manchester	Personalisation	54 of 80	Book now
11/02/09	Common Assessment Framework (CAF) for Adults Consultation Events – Bristol	Personalisation	76 of 90	Book now
17/02/09	Common Assessment Framework (CAF) for Adults Consultation Events – Leeds	Personalisation	76 of 90	Book now
19/02/09	Common Assessment Framework (CAF) for Adults Consultation Events – Birmingham	Personalisation	80 of 90	Book now
26/02/09	North West Regional Housing LIN Meeting	Housing	21 of 35	Book now
04/03/09	South West Regional Housing LIN Meeting	Housing	33 of 35	Book now
10/03/09	Acquired Brain Injury - Current practice and vision for the future	Housing	-	N/A
12/03/09	Whole System Demonstrator Programme (WSDAN) - Integrated care using telecare and telehealth	Telecare LIN	50 of 50	Book now
30/04/09	West Midlands Regional Housing LIN Meeting	Housing	35 of 35	Book now
07/05/09 to 08/05/09	RCGP Conference 2009 Working with Drug & Alcohol Users in Primary Care -	Alcohol Learning Centre	-	N/A

Latest events <http://www.networks.csip.org.uk/Events/>.

The Foundation for Assistive Technology (FAST) provides a full listing of forthcoming telecare events – see <http://www.fastuk.org/services/events.php?pg=2>. Suppliers also run telecare and telehealth events – check their web sites regularly for dates.

All previous telecare eNewsletters are available at: www.networks.csip.org.uk/telecarenewsletters

Appendix 1 – Supplier supplement for March 2009

As you know, from time to time we offer some space on an equitable basis to suppliers in the CSIP Telecare eNewsletter newsletter.

We wish to continue to recognise the important work that suppliers have done in responding to their customers and working in partnership to implement telecare and telehealth programmes since 2005/6. For this addition, we are broadening the scope to other agencies and organisations involved in telecare and telehealth implementation.

For organisations that wish to contribute to the newsletter supplement here are the details:

- a) Up to 5 pages of A4 (12 point Arial) per supplier in Microsoft Word (we can include a jpeg image/logo but keep the layout and margins simple for copy/pasting)
- b) Please use the general definition of telecare from Building Telecare in England to include some form of monitoring/response. The definition is broad to include telehealth, community safety etc. http://www.dh.gov.uk/en/Publicationsandstatistics/Publications/PublicationsPolicyAndGuidance/Browsableable/DH_4122310
- c) Please include case studies, evaluation findings, innovations. (we are looking for telehealth, telephone support, weather forecast examples and some of the more complex assessment and integrated systems eg for dementia or extra care rather than simpler solutions)
- d) We are not looking for advertisements as suppliers can include links to their web sites in the article, it is more about case studies (anonymised), evaluations, device/monitoring options, solutions, examples of products and services in use, achievements. Embedded web links are OK but we will not have time to check them all
- e) If you are referencing local authorities, health trusts, housing associations by name please confirm that they are happy for you to use their names
- f) The supplement is open to all suppliers/organisations as long as they meet a 5pm, 13 March deadline. Suppliers involved outside of the National Framework Agreement are eligible for inclusion. This would ensure that all suppliers are treated equitably
- g) Where there are sub-contractors and affiliates in the National Framework Agreement, we will link to the NHS PASA current position from the supplement and cross references can be included in the submission.
- h) Inclusion in the supplement does not imply any endorsement of the products/services by DH and there will be a reminder in the supplement to telecare organisations about the importance of making appropriate checks and following procurement and purchasing requirements
- i) Word documents can be sent to Mike Clark (CSIP Networks) at telecare@csip.org.uk by the 13 March deadline
- j) The Telecare LIN reserves the right not to include duplicated company/supplier examples and speculative advertisements without information about case studies, evaluations, achievements.